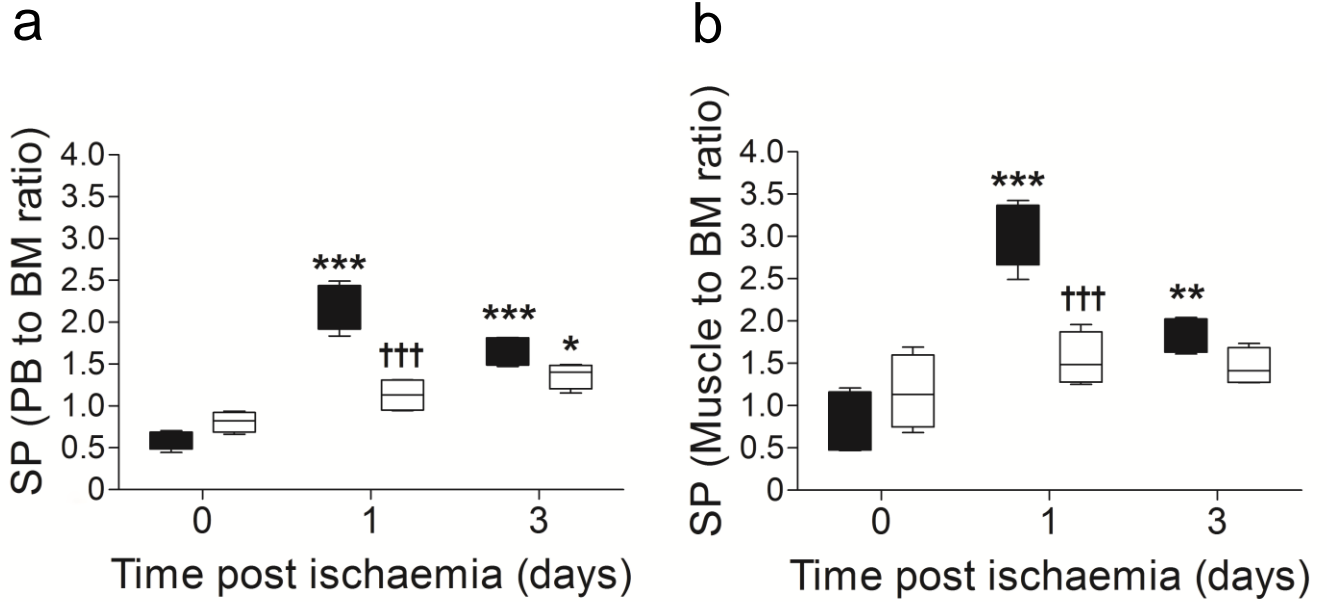


ESM Fig. 3



ESM Figure 3: Diabetes alters the formation of a gradient of SP following ischaemia. Bar graphs show the SP ratio between PB and BM (**a**) and ischaemic adductor muscle and BM (**b**). Black: non-diabetic, white: type 2 diabetic mice. * $P < 0.05$, ** $P < 0.01$ and *** $P < 0.001$ vs. time 0; ††† $P < 0.001$ vs. ND, $n = 5$ per group.