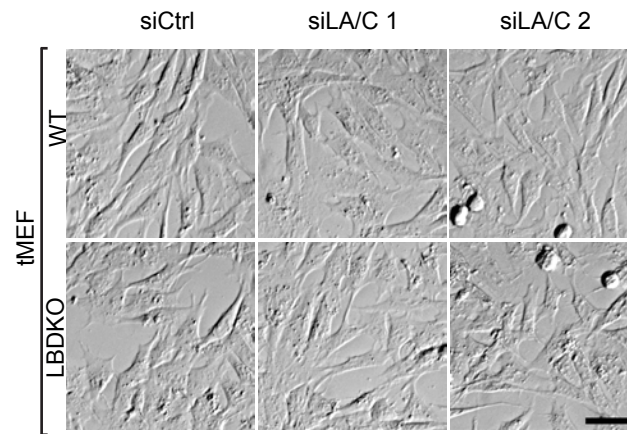


# Supplemental Materials

*Molecular Biology of the Cell*

Guo et al.

A



B

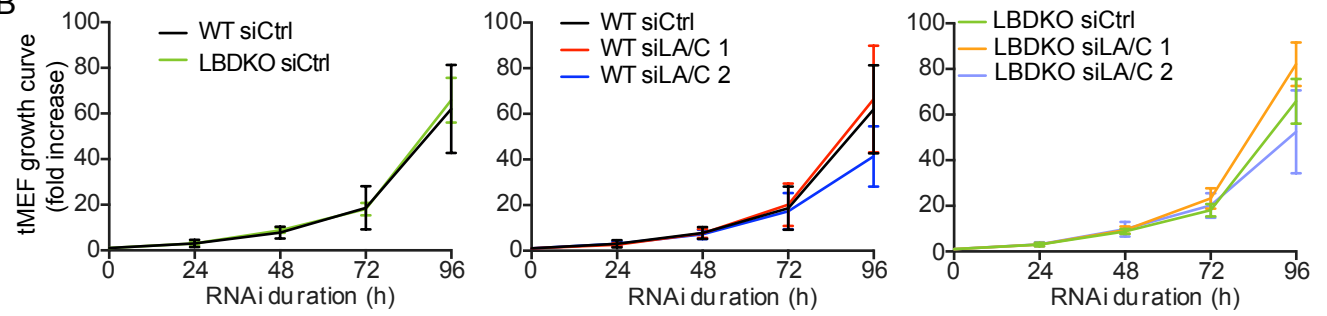
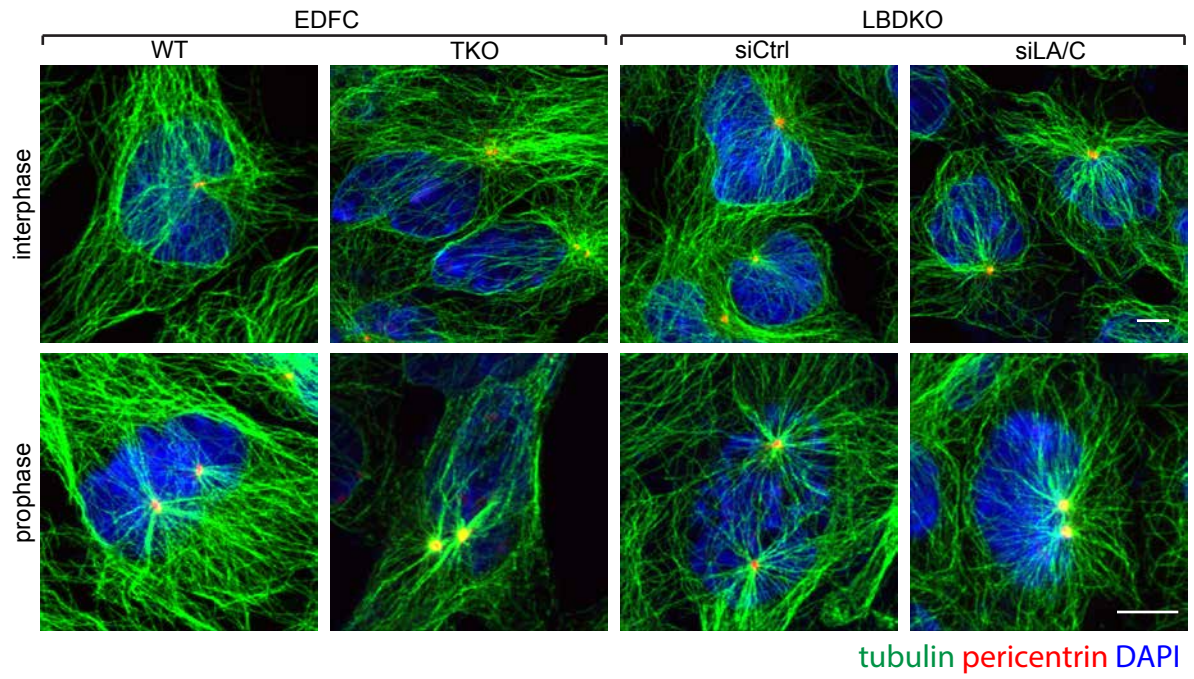


Figure S2, Guo and Zheng, 2015



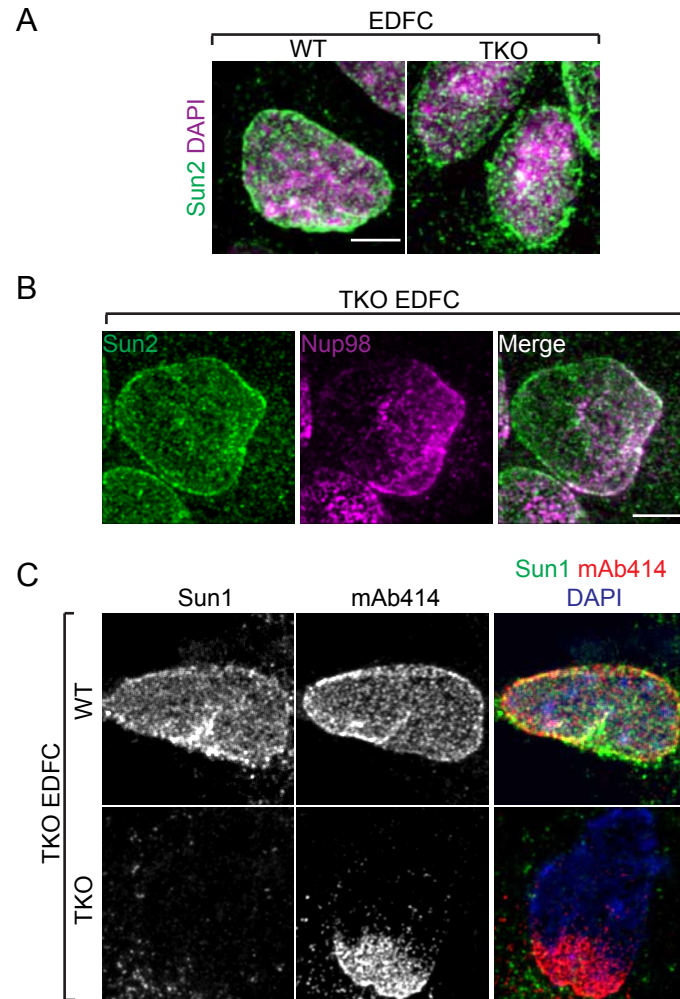
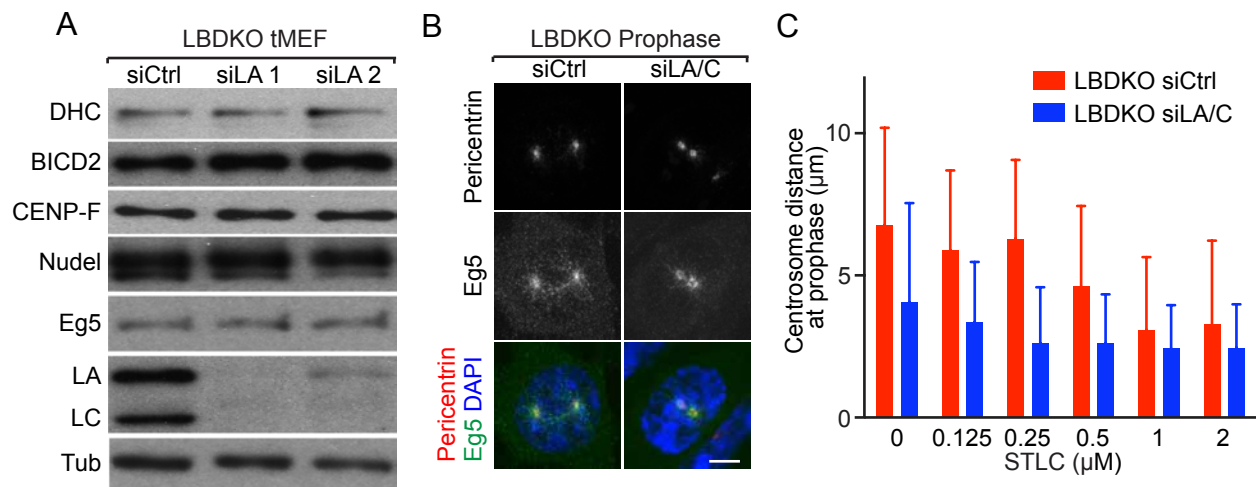


Figure S4, Guo and Zheng, 2015



**Figure S1. Characterization of tMEFs.** (A) Phase-contrast images of tMEFs. Scale bar, 50 $\mu$ m. (B) Growth curve of tMEFs. N=3 experiments. Error bars, SD.

**Figure S2. Microtubule organization in EDFCs and tMEFs.** Immunofluorescence images of tubulin, pericentrin and DAPI in EDFCs and tMEFs. Scale bar, 5 $\mu$ m.

**Figure S3. The localization of Sun1 and Sun2 in EDFCs.** (A) Immunofluorescence of Sun2 in EDFCs. (B) Dual-color immunofluorescence of Sun2 and Nup98 in EDFCs. (C) Dual-color immunofluorescence of Sun1 and Nup98 in EDFCs. Scale bar, 5 $\mu$ m.

**Figure S4. Eg5 cooperates with lamin to drive centrosome separation.** (A) Western blot analysis of proteins that are known to regulate centrosome separation in tMEFs. (B) Immunofluorescence of Eg5 and pericentrin in tMEFs. Scale bar, 5 $\mu$ m. (C) Quantification of centrosome distance in tMEFs treated with serial concentrations of STLC. N>60 cells in 3 independent experiments. Error bar, SD.