

Figure S1

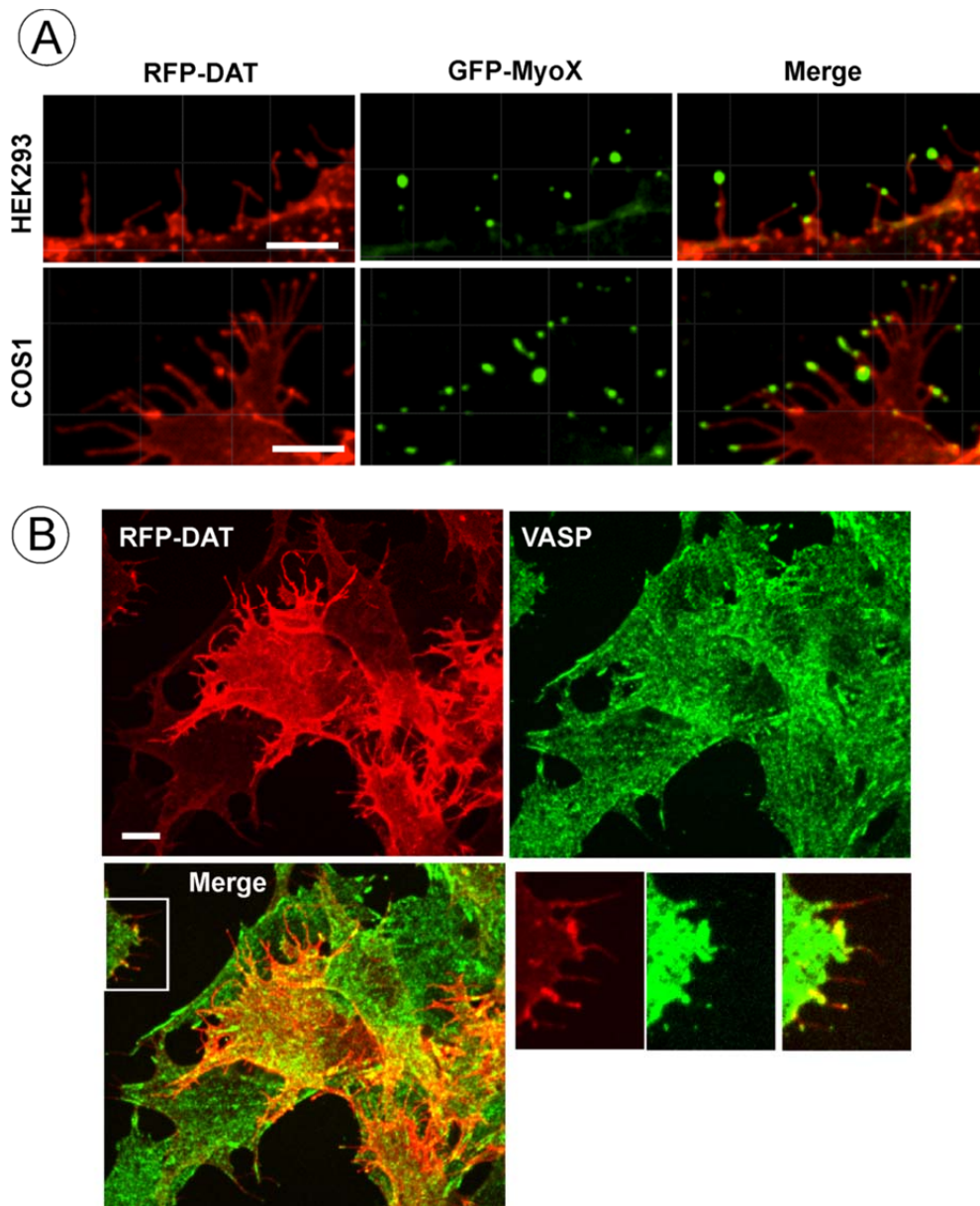


Figure S1. MyoX in DAT-containing filopodia.

(A) RFP-HA-DAT and GFP-Myo10 were transiently expressed in Cos-1 and HEK293 cells, and live-cell imaging was performed as in Fig. 1B. Scale bars, 5 μ m.

(B) PAE/RFP-HA-DAT cells were fixed, permeabilized and immunostained with mouse monoclonal VASP antibodies followed by secondary conjugated to Alexa488, respectively. 3D images are acquired through 488 (green, VASP) and 561 (red, RFP) filter channels. A single confocal section is presented. Insets show high magnification of the region marked by white rectangles. Scale bar, 10 μ m.

Figure S2

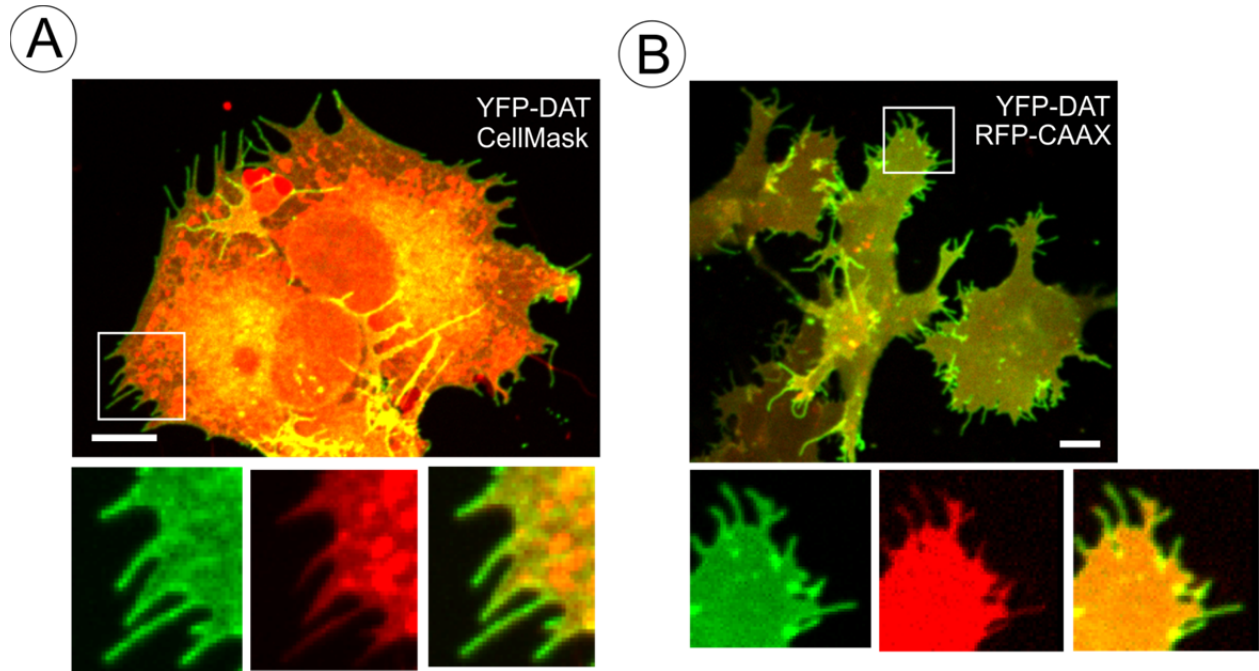


Figure S2. DAT is enriched in filopodia.

(A) PAE/YFP-HA-DAT cells were stained with CellMask (dilution 1:1000) and fixed. Live-cell imaging was performed. 3D images are acquired through 515 (green, YFP) and 561 (red, CellMask) channels. Maximal projection of the z-stack is presented.

(B) RFP-CAAX was transiently expressed in PAE/YFP-HA-DAT cells, and 3D live-cell imaging was performed through 515 (green, YFP) and 561 (red, RFP) filter channels. A single confocal section is presented.

Insets show high magnification of the region marked by white rectangles. Scale bars, 10 μm .