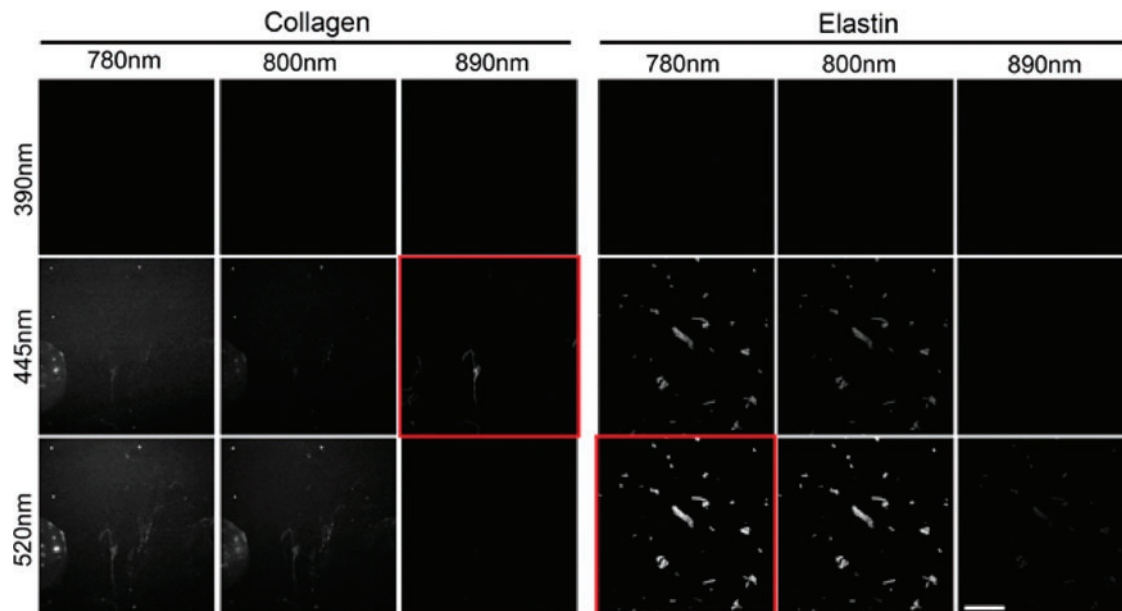


Supplementary Data



SUPPLEMENTARY FIG. S1. Excitation and emission wavelengths for detecting pure collagen or pure elastin crystals. Solutions of type I collagen (ColI) or elastin (Eln) were coated onto coverslips and imaged with multiphoton excitation using combinations of excitation and emission wavelengths. *Red boxes* indicate imaging parameters selected for this study for ColI and Eln. Scale bar= 100 μ m.