

Soft-tissue and dermal arrangement in the wing of an Early Cretaceous bird: Implications for the evolution of avian flight

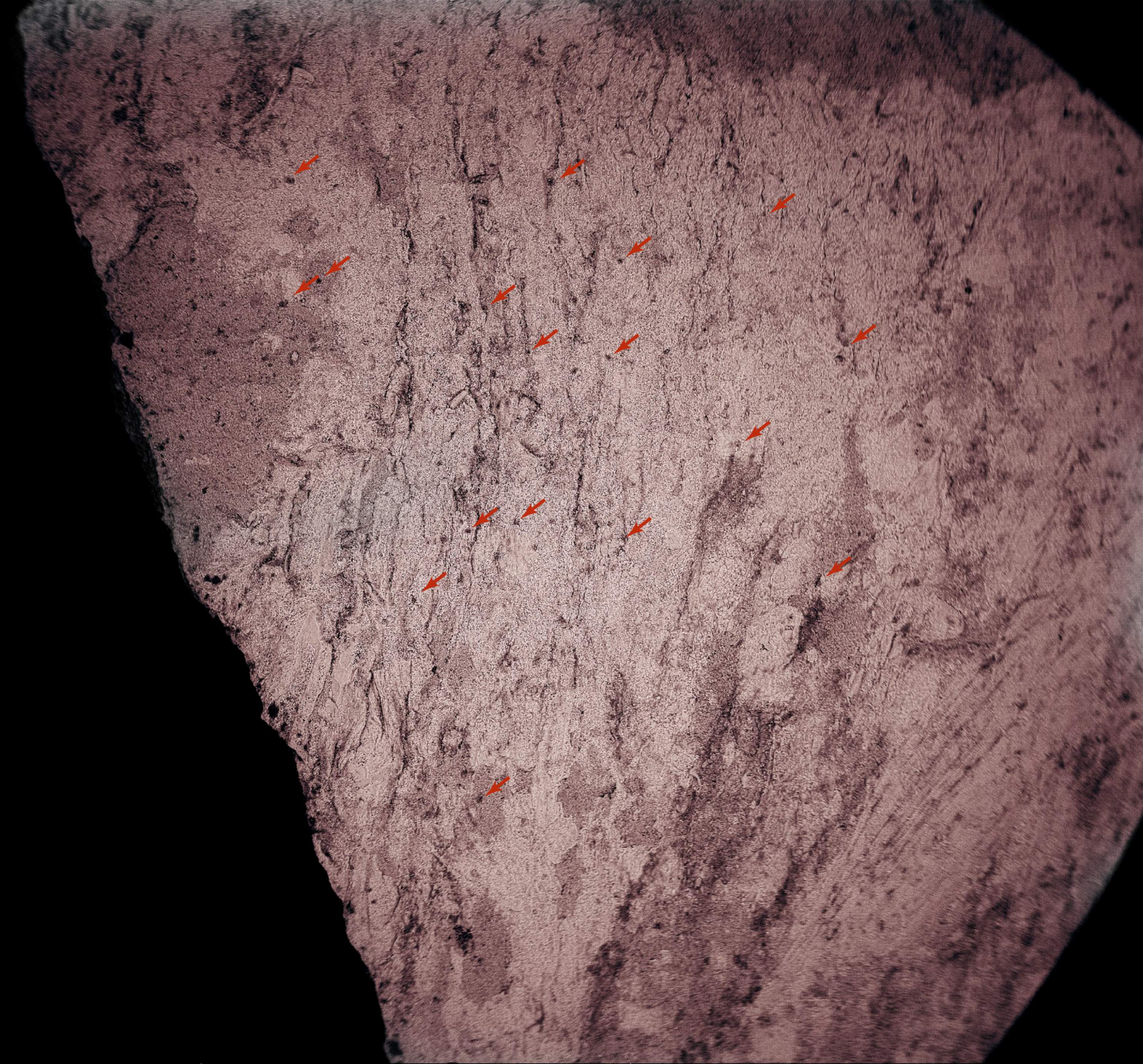
**Guillermo Navalón^{1,2}, Jesús Marugán-Lobón^{2,3}, Luis M. Chiappe^{3*}, José Luis Sanz²,
Ángela D. Buscalioni²**

1 School of Earth Sciences, University of Bristol, Wills Memorial Building, Queens Road, Bristol, BS8 1RJ, UK.

2 Unidad de Paleontología, Facultad de Ciencias, Universidad Autónoma de Madrid, Campus de Cantoblanco, Madrid, Spain.

3 Dinosaur Institute, Natural History Museum of Los Angeles, 900 Exposition Boulevard, Los Angeles, CA 90007, U.S.A.

*corresponding author: lchiappe@nhm.org



2.0mm

Figure S1. Scattered pattern of follicles in the propatagium of MCCMLH31444 (SEM). Red arrows indicate the location of some follicles.