

Figure 1

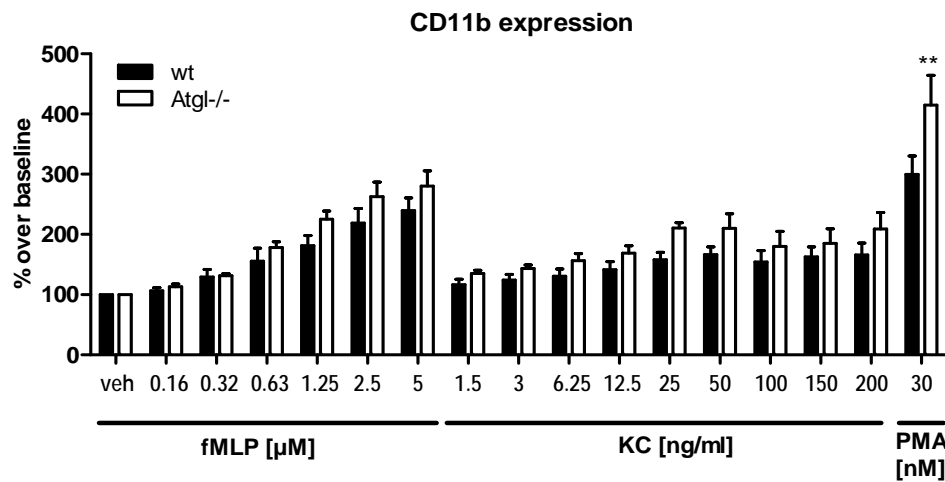


Figure 1: Agonist-induced CD11b surface expression of wt and Atgl-/- neutrophils

Isolated neutrophils were pre-incubated with anti-CD11b-Alexa Fluor647 (BD Biosciences, San Jose, CA) for 10 min at RT in the dark and then stimulated with various concentrations of formyl-methionyl-leucyl-phenylalanine (fMLP), keratinocyte-derived chemoattractant (KC) (PeproTech Inc., Rocky Hill, NJ) and phorbol myristate acetate (PMA) (Sigma-Aldrich, Steinheim, Germany), and for 30 min at 37°C. Cells were resuspended in Cellfix for analysis using a FACScalibur flow cytometer (BD Biosciences). Data are shown as -fold change relative to vehicle-treated control cells + SEM (n=6-12). **p ≤ 0.01