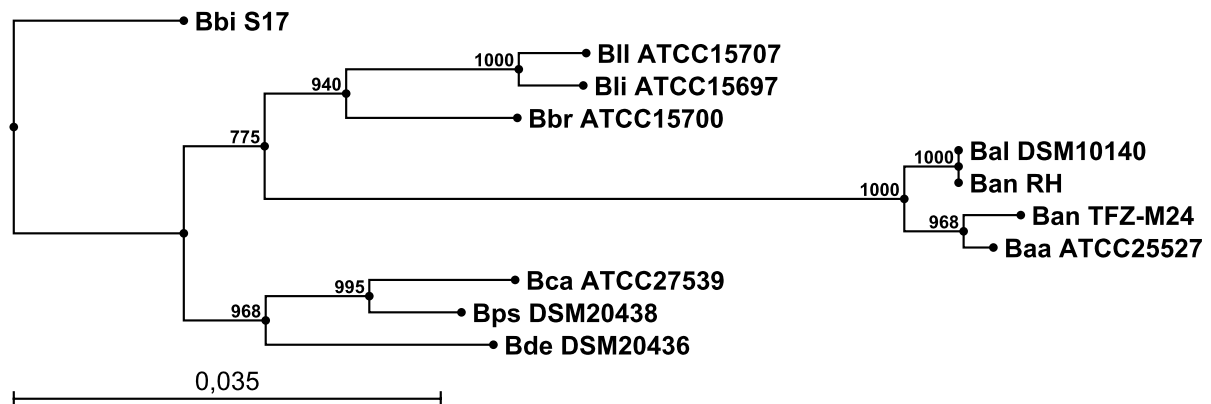


1 **S1 Figure**

2



3

4

5 **Supplementary Figure S1: Taxonomic analysis of the *Bifidobacterium* sp. strain isolated**

6 **from the animal facility at Ulm University.** A phylogenetic tree was calculated with the 16S

7 rRNA gene sequence of the isolated strain (Ban TFZ-M24) obtained by PCR (described in

8 Materials and Methods) and the corresponding sequences of *B. bifidum* S17 (Bbi S17), *B.*

9 *longum* subsp. *longum* ATCC15707 (Bli ATCC15707), *B. longum* subsp. *infantis*

10 ATCC15697 (Bli ATCC15697), *B. breve* ATCC15700 (Bbr ATCC15700), *B. animalis* subsp.

11 *lactis* DSM10140 (Bal DSM10140), *B. animalis* RH (Ban RH), *B. animalis* subsp. *animalis*

12 ATCC25527 (Bal ATCC25527), *B. catenulatum* ATCC27539 (Bca ATCC27539), *B.*

13 *pseudocatenulatum* DSM20438 (Bps DSM20438), and *B. dentium* DSM20436 (Bde

14 DSM20436). Numbers indicate bootstrap values from n=1000 iterations.

15