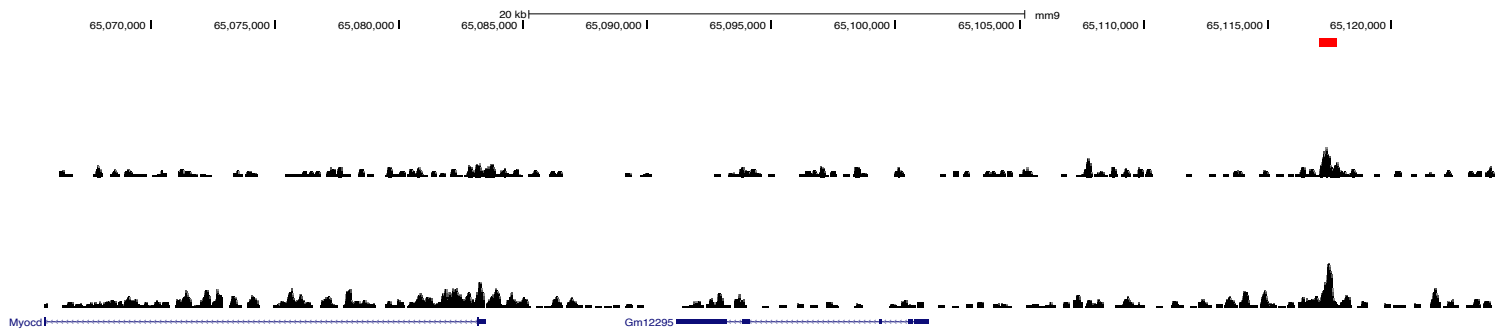
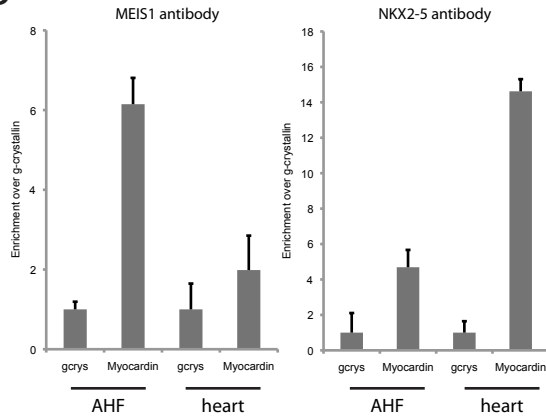


A Myocardin gene locus

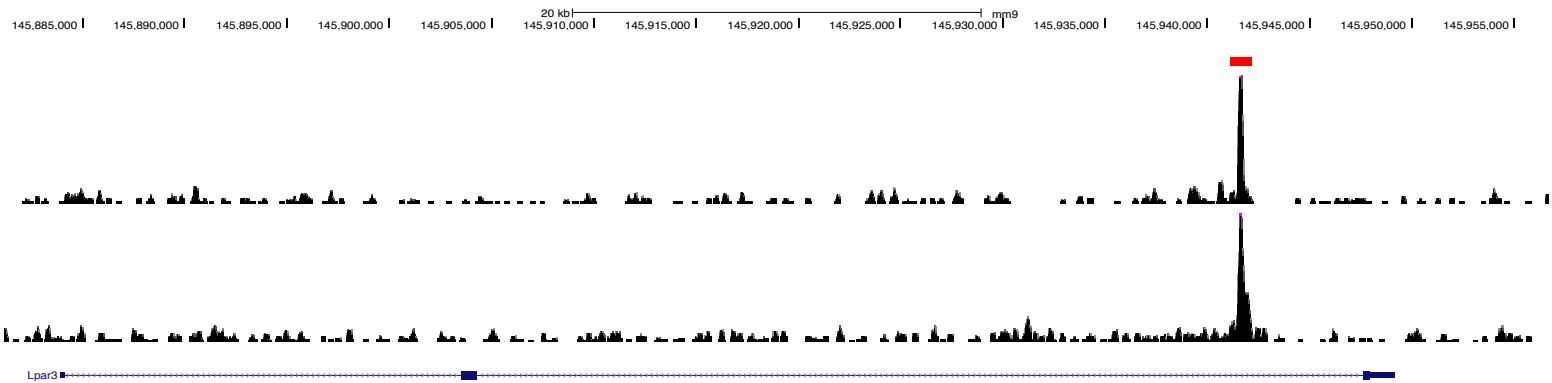


B

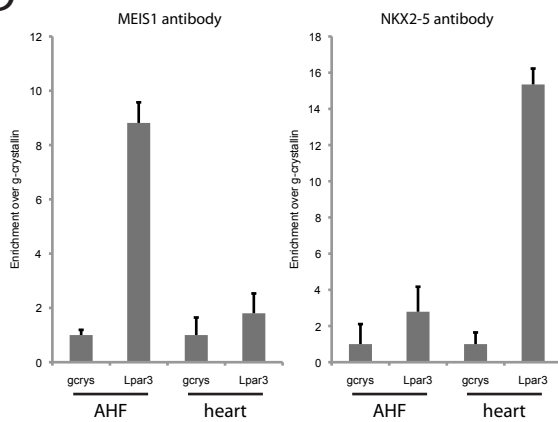


C

Lpar3 gene locus



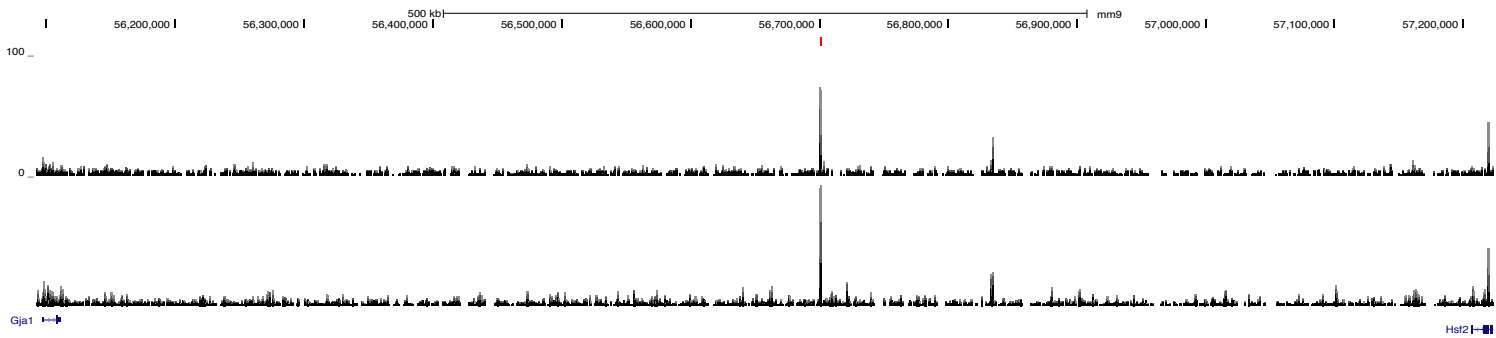
D



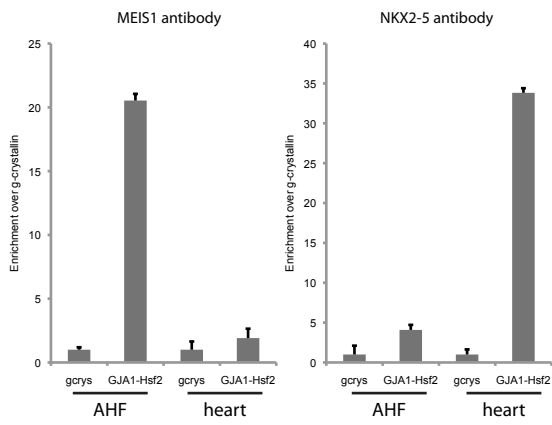
Data S3. MEIS1 and NKX2-5 successively bind four identified enhancers, Related to Figure 4. (A, C, E, F) ChIP-seq trace at the four loci studied. Red bar indicates the region found enriched for NKX2-5 binding and tested in the ChIP assay. (A) Locus of the Myocardin gene. (C) Locus of the Lpar3 gene. (E) Locus of the Gja1 and Hsf2 genes (G) Locus for the Cadm1 gene. (B, D, F, H) ChIP analysis carried out with chromatin purified from E9.5 AHF and heart with either MEIS1 or NKX2-5 antibodies. Representative results of quantitative PCR analysis with primers against the region enriched for NKX2-5 binding are shown. Relative enrichment is presented over a negative control region in the gamma-crystallin gene (gcrs). Two independent experiments were carried out.

E

Gja1 and Hsf2 gene locus

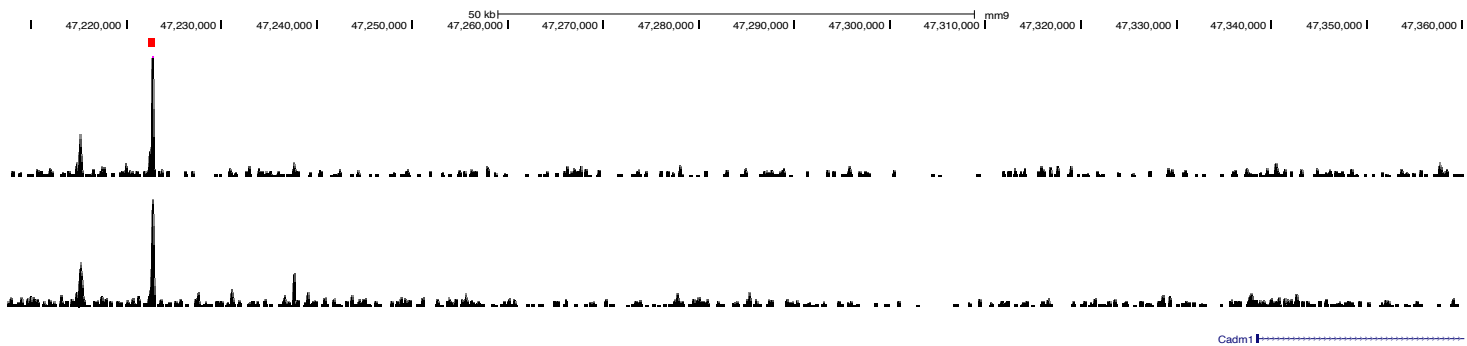


F



G

Cadm1 genes locus



H

