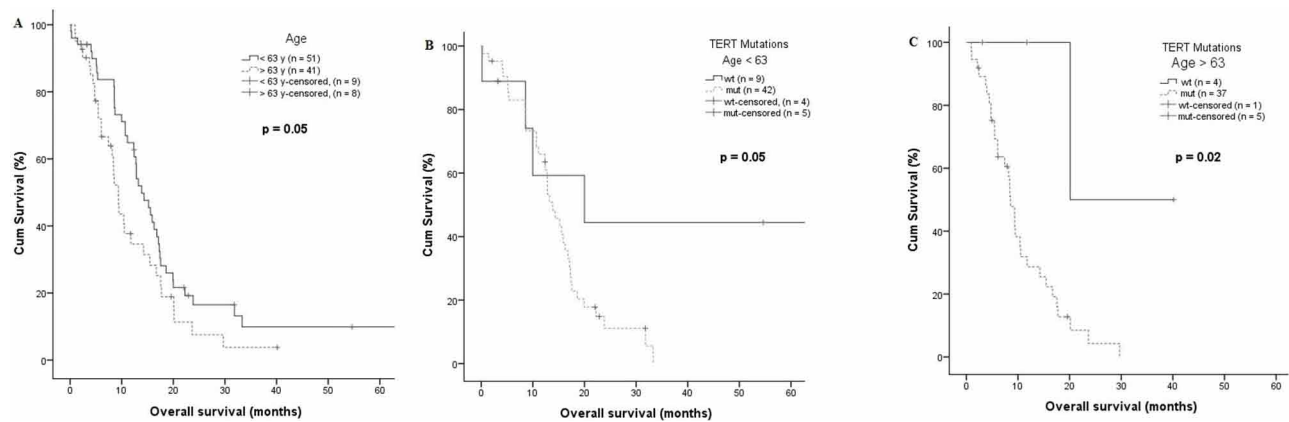


## SUPPLEMENTARY FIGURE AND TABLE



**Supplementary Figure S1: The prognostic impact of median age at diagnosis (<63y/ ≥63y) was analyzed for the entire GBM patient cohort A.** A significantly reduced OS was shown for older patients (>63 years)  $p = 0.05$ . The impact of the *TERT* promoter mutation status on patient OS was analyzed in age stratified patient subgroup **B**. & **C**. A significantly reduced OS was observed in the subgroup older than 63 years ( $p = 0.02$ ).

Supplementary Table S1: *TERT*, *POT1* and *IDH1/2* primers

	Forward primer	Reverse primer
TRET promoter	GGCCGATTCGACCTCTCT	AGCACCTCGCGGTAGTGG
TERT rs10069690	biotin-TCCTGGCCGCATGTGTGT	AGAGTGTGGGGTGAGGTGGA
POT1-EX5	AGCATGTAATCACATTGGAGGT	TCTATGTGTGTGGCATATACAGG
POT1-EX6	CATGGATTTGCTGCTAATATGAT	TGGAACCGTGTTCCTAAATC
POT1-EX7	TGAAAGCCAAGAAAATGTCTC	TGAAAAGCTTGCTGTCATGT
POT1-EX8	TTCCAGTTTCTTTGGTTCGT	CACAGCATGCTTTATCTCATCA
POT1-EX9	TGCCAATATTCAGAGGCATAAG	AAAAATTTACATGAGCAAAAATCAC
POT1-EX10	ATTGGCCCCATATTGGTTAT	GCACAAAAGGCTAGGGAAC
POT1-EX18	TCTAGATTATCTTTAATTGGACA	ACTTCTAAAAGTCCACAGAGTACA
IDH1	CTCAGAGCCTTCGCTTTCTG	CACATACAAGTTGGAAATTTCTGG
IDH2	GGGGTTCAAATTCTGGTTGA	CTAGGCGAGGAGCTCCAGT