

Six stroma-based RNA markers diagnostic for prostate cancer in European-Americans validated at the RNA and protein levels in patients in China

Supplementary Material

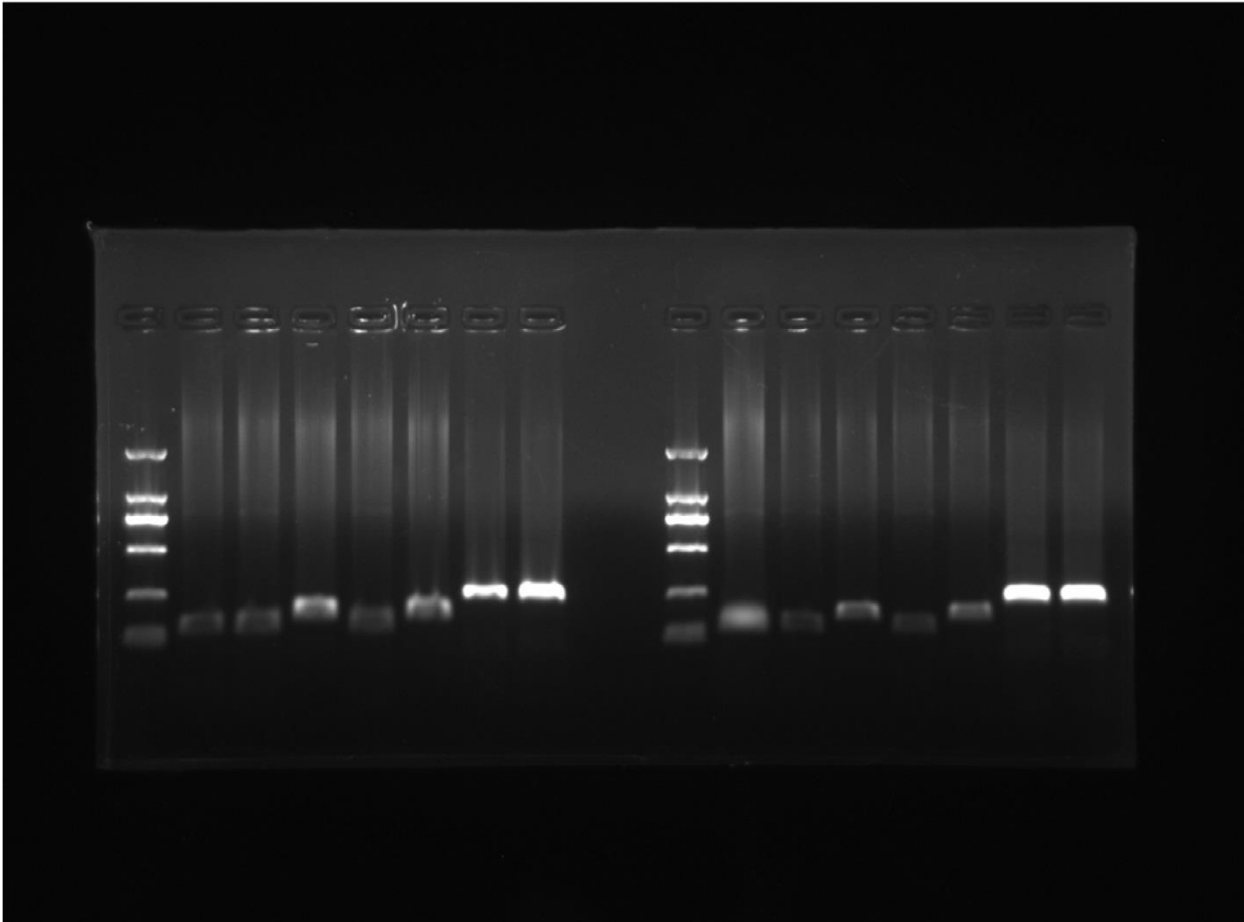


Figure S1: Original images for the PCR agarose gel. Left panel is normal stroma (NS) and right panel is Tumor adjacent stroma (TS).

Table S1: Primer List for the six selected genes.

Gene	Direction	Primer	PCR production length
<i>CAV1</i>	F	CAGTGCATCAGCCGTGTCTA	103
	R	TCTGCAAGTTGATGCGGACA	
<i>COL4A2</i>	F	CATCACACCCCCTTCCAACA	80
	R	CCCGATAACCTTTCAGGCCA	
<i>HSPB1</i>	F	AGCTGACGGTCAAGACCAAG	224
	R	TGGGATGGTGATCTCGTTGG	
<i>ITGB3</i>	F	CCCAGATGCCTGCACCTTTA	110
	R	ACTCAATCTCGTCACGGCAG	
<i>MAP1A</i>	F	GAGAGGCTTCCTCCTACACC	186
	R	GTCTCCCCCAGGCTCTAAAC	
<i>MCAM</i>	F	GAAGCATGGGGCTTCCCAG	234
	R	GCACACGGAAGATGAGCGTC	
<i>GAPDH</i>	F	CATGGGTGTGAACCATGAGAAGTA	239
	R	CAGTAGAGGCAGGGATGATGTTCT	