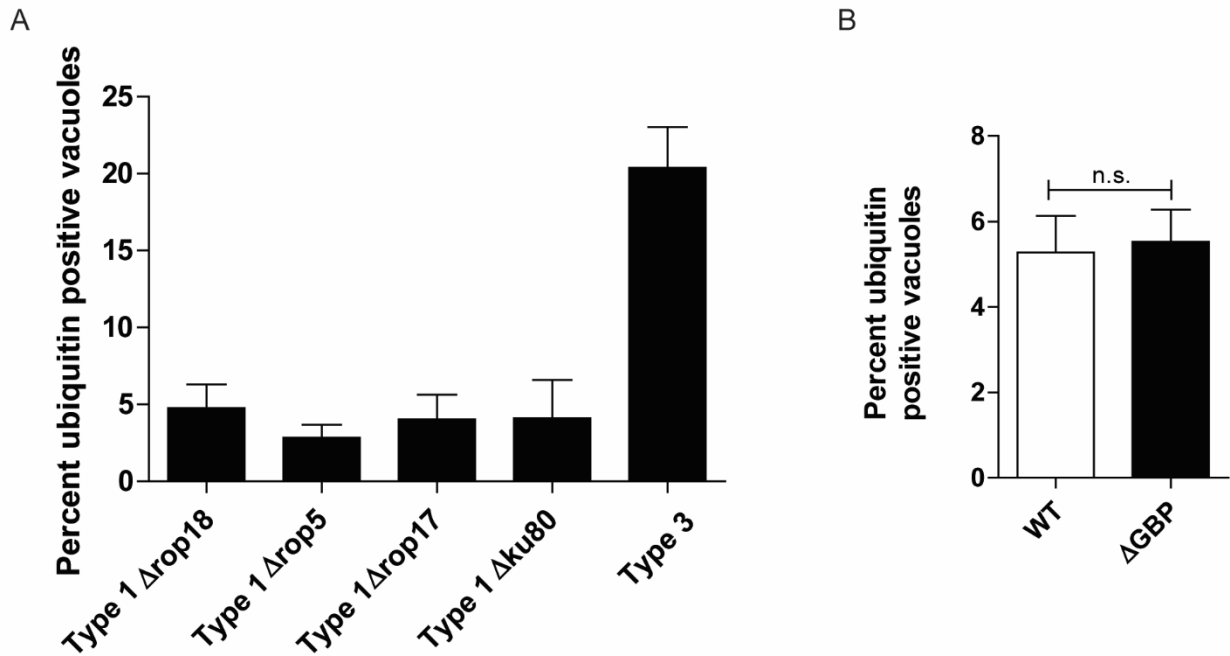


Figure S1



**FIG. S1. Recruitment of autophagy proteins to *T. gondii* lacking ROP proteins and in GBP-deficient cells. Related to FIG. 1**

A) Parental type 1 (RHΔku80) or type 1 Δrop18, Δrop17, Δrop5, or type 3 (VEG) parasites were analyzed for recruitment of ubiquitin at 6 hr post infection in IFN $\gamma$ -activated HeLa cells. Parasites were localized with the PVM marker GRA7 and ubiquitin was localized with the mAb FK2 followed by anti-goat IgG conjugated to Alexa Fluor 594. N = 2 experiments, 6 coverslips total. Mean  $\pm$  SD. B) Quantification of recruitment of ubiquitin to type 3 (VEG) parasites in IFN $\gamma$ -activated wild type (WT) or GBP cluster knockout HAP1 cells at 6hr post infection. N= 3 experiments. Mean  $\pm$  SEM. n.s.= not significant, Student's t test.