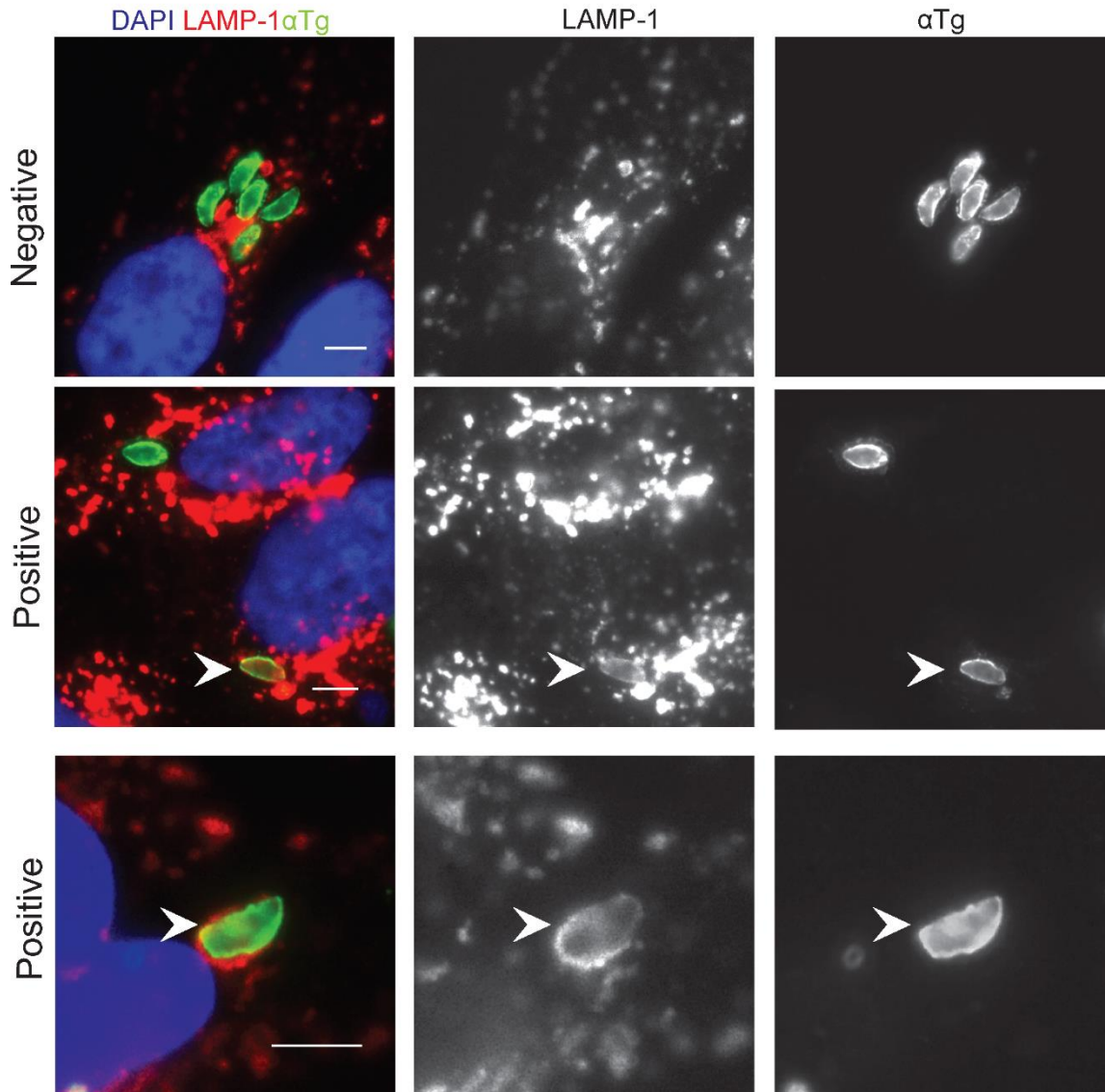


Figure S2



**FIG. S2. LAMP-1 localization by immunofluorescence in *T. gondii* infected HeLa cells. Related to FIG. 2**

Immunofluorescence images of type 3 (VEG) *T. gondii* in IFN $\gamma$ -activated HeLa cells at 6 hr post infection. Parasites were localized with mAb DG52 ( $\alpha$ Tg) to SAG1 followed by goat anti-mouse IgG conjugated to Alexa Fluor 488 (green). LAMP-1 was localized with a rabbit polyclonal antibody followed by goat anti-rabbit IgG conjugated to Alexa Fluor 594 (red). Arrowheads indicate positive rim of LAMP-1. Host nuclei were localized with DAPI. Scale bars = 5  $\mu$ m.