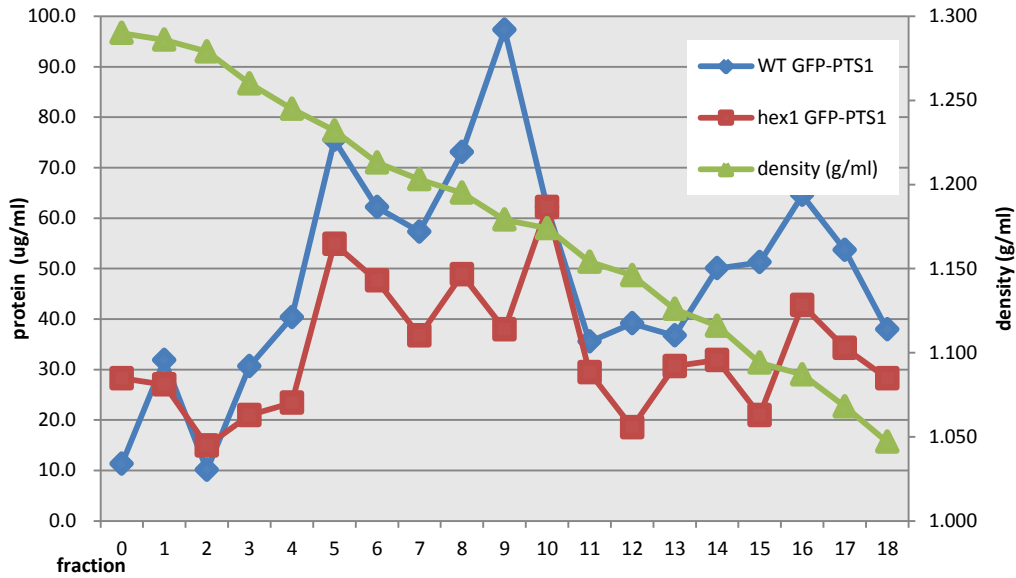


Cellular organelle fractionation



3 4 5 6 7 8 9 10 11 12 13

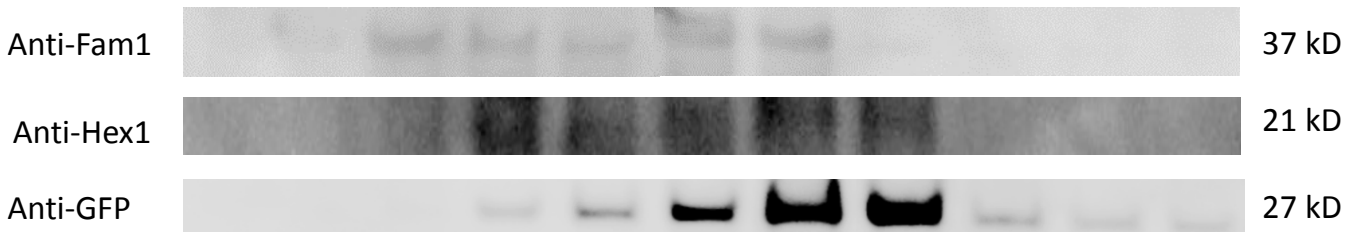


FIGURE S8 Fam1 cofractionates with WB marker proteins after separation of organelles. Fungal organelles were separated by centrifugation on a 17–60% Nycodenz density gradient and fractions were tested for the presence of Fam1 and CoHex1 by Western blot analysis. The graph shows the shape of the gradient and total protein distribution across the gradient. PTS1-GFP provided a marker of the peroxisome matrix, detected with anti-GFP antibodies.