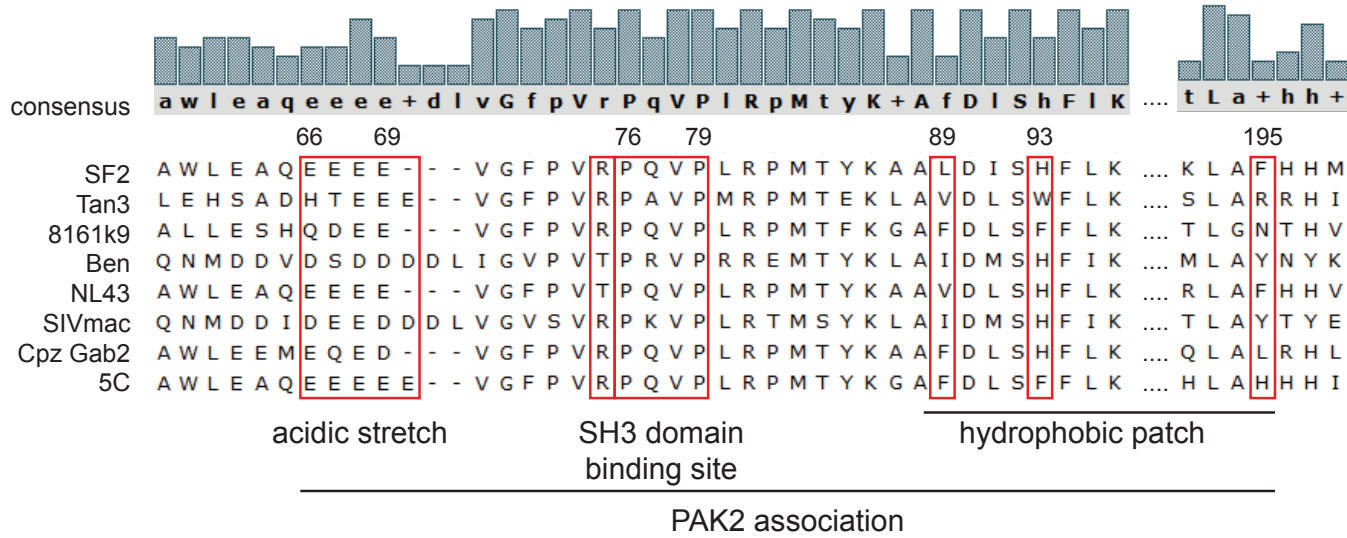
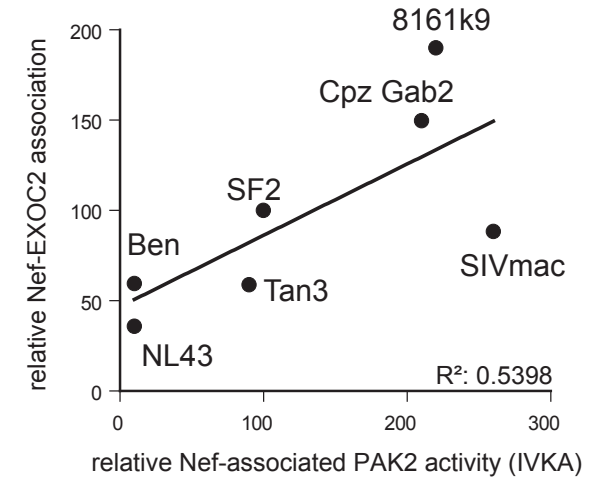


A**B****C**

	SF2	Tan3	8161k9	Ben	NL43	SIVmac	Cpz Gab2	SF2 G2A	SF2E4A4	SF2AxxA	SF2F195A	Ref
EXOC	++	+	+++	+	+	++	+++	+	-	-	-	this study
PAK2	++	++	+++	+/-	+/-	+++	+++	-	+	-	-	9, 10, 11, 13
Ruffle inhibition	++	-	++	++	++	++	++	-	-	-	-	9, 12
pCofilin induction	++	-	++	++	++	++	++	nd	nd	-	-	9, 12
Actin Ring inhibition	++	-	++	++	++	+++	++	-	+	-	-	2, 11
pTyrosin inhibition	++	-	++	++	++	++	++	nd	nd	-	-	2, 11