

364 Supplementary Table A: Baseline characteristics of the bortezomib-MUD vs. MMUD/MMRD  
365 cohorts

366 Supplementary Table B: Baseline characteristics of the bortezomib-MUD/MMUD/MMRD vs.  
367 Tac/Mtx MUD control cohort

368 Supplementary Table C: Outcomes of the bortezomib-MUD/MMUD/MMRD vs. Tac/Mtx MUD  
369 control cohort

382 Supplementary Figure 1: Cumulative incidence curves of grade II-IV acute GVHD and of relapse  
383 or death without developing grade II-IV acute GVHD, between the bortezomib-  
384 MUD/MMUD/MMRD vs. Tac/Mtx MUD control cohort

ACCEPTED MANUSCRIPT

388 Supplementary Table A

Bortezomib-treated cohorts	7/8 MMUD/RD		8/8 MUD		7/8 vs. 8/8 p-value
	N=20		N=14		
	N	%	N	%	
Age, median (range)	49 (21, 60)		49 (29, 60)		>0.99
Age ≥ 50	10	50	6	42.9	0.74
Patient Sex					0.49
M	7	35	7	50	
F	13	65	7	50	
Donor Sex					0.5
M	10	50	9	64.3	
F	10	50	5	35.7	
Male Patient & Female Dnr	2	10	2	14.3	>0.99
Diagnosis					0.38
AML	11	55	6	42.9	
CML			1	7.1	
MM/PCD	1	5			
ALL	2	10			
MDS	2	10	4	28.6	
MPD	1	5	2	14.3	
NHL	3	15	1	7.1	
Patient or Donor CMV seropositivity					0.63
Yes	18	90	11	78.6	

389

Disease Risk Index					0.45
Low			1	7.1	
Intermediate	14	70	10	71.4	
High	6	30	3	21.4	
HCT - CI					
0	8	40	7	50	0.41
1-2	7	35	2	14.3	
≥3	5	25	5	35.7	

390

391

392 Supplementary Table B

393

Bortezomib-treated and control cohorts	Protocol 11-007 (Bort/Tac/MTX)		Control cohort (Tac/MTX)		p-value
	N	%	N	%	
Total	34	100	45	100	
Age, median (range)	49 (21, 60)		44 (22, 60)		0.02
Age ≥ 50	16	47.1	13	28.9	0.11
Patient Sex					0.65
M	14	41.2	21	46.7	
F	20	58.8	24	53.3	
Donor Sex					0.65
M	19	55.9	28	62.2	
F	15	44.1	17	37.8	
Male Patient & Female Dnr	4	11.8	3	6.7	0.46
PBSC Graft	34	100	45	100	NA
HLA type (at A, B, C, DRB1)					<0.001
8/8 MUD	14	41.2	45	100	
7/8 URD/RD	20	58.8			
Diagnosis					0.26
AML	17	50	19	42.2	
CLL/SLL/PLL			1	2.2	
CML	1	2.9	2	4.4	
MM/PCD	1	2.9			
ALL	2	5.9	11	24.4	
MDS	6	17.6	4	8.9	
MPD	3	8.8	1	2.2	
Mixed MDS/MPD			1	2.2	
NHL	4	11.8	6	13.3	
Patient or Donor CMV seropositive					0.4
Yes	29	85.3	34	75.6	
Disease Risk Index					0.62
Low/Intermediate	25	73.5	30	66.7	
High/Very High	9	26.5	15	33.3	
HCT - CI					0.55
0	15	44.1	18	40	
1-2	9	26.5	17	37.8	
≥ 3	10	29.4	10	22.2	

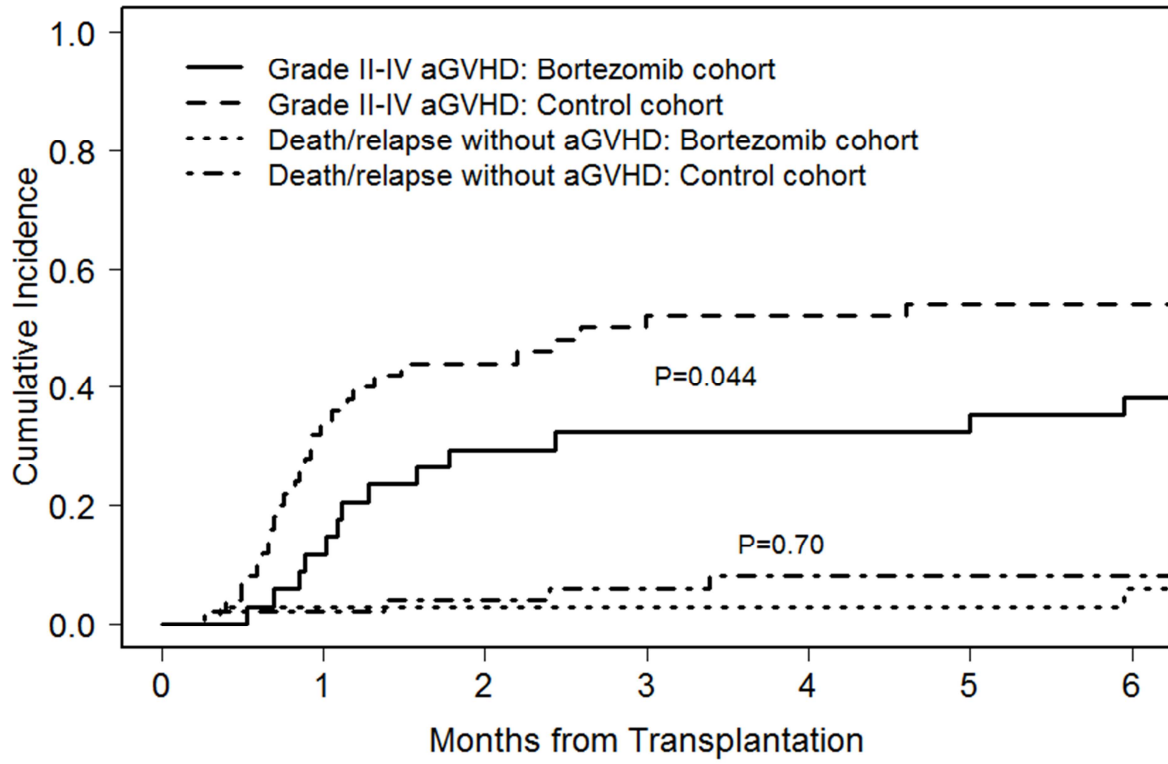
394 Supplementary Table C

Bortezomib-treated vs. Control cohorts	Protocol 11-007			Control * (D) (N=45)	p-value	
	8/8 MUD (A) (N=14)	7/8 UD/RD (B) (N=20)	All (C) (N=34)		C vs. D	B vs. D
	Cum Inc of D180 grade II-IV aGVHD	29%	45%		38%	56%
Cum Inc of D180 grade III-IV aGVHD	7%	15%	12%	27%	0.07	0.26
1-year Cum Inc of cGVHD	57%	45%	50%	40%	0.42	0.8
1-year Cum Inc of Extensive cGVHD	43%	40%	41%	40%	0.69	0.86
2-year Cum Inc of NRM	14%	15%	15%	11%	0.41	0.32
2-year Cum Inc of Relapse	0%	26%	15%	27%	0.16	0.77
2-year Progression-free Survival	86%	59%	70%	62%	0.52	0.65
2-year Overall Survival	86%	61%	71%	64%	0.57	0.63

\* 8/8 MUD and Tac/Mtx only. HSCT period: 2010-2012

395

421 Supplementary Figure 1



422

ACCEPTED