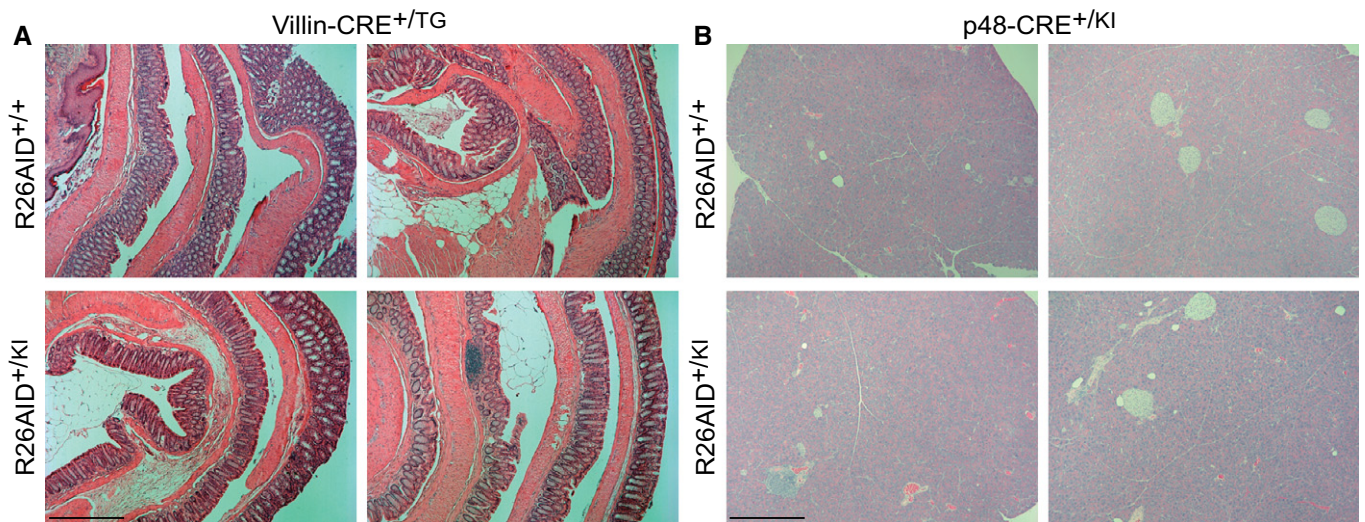
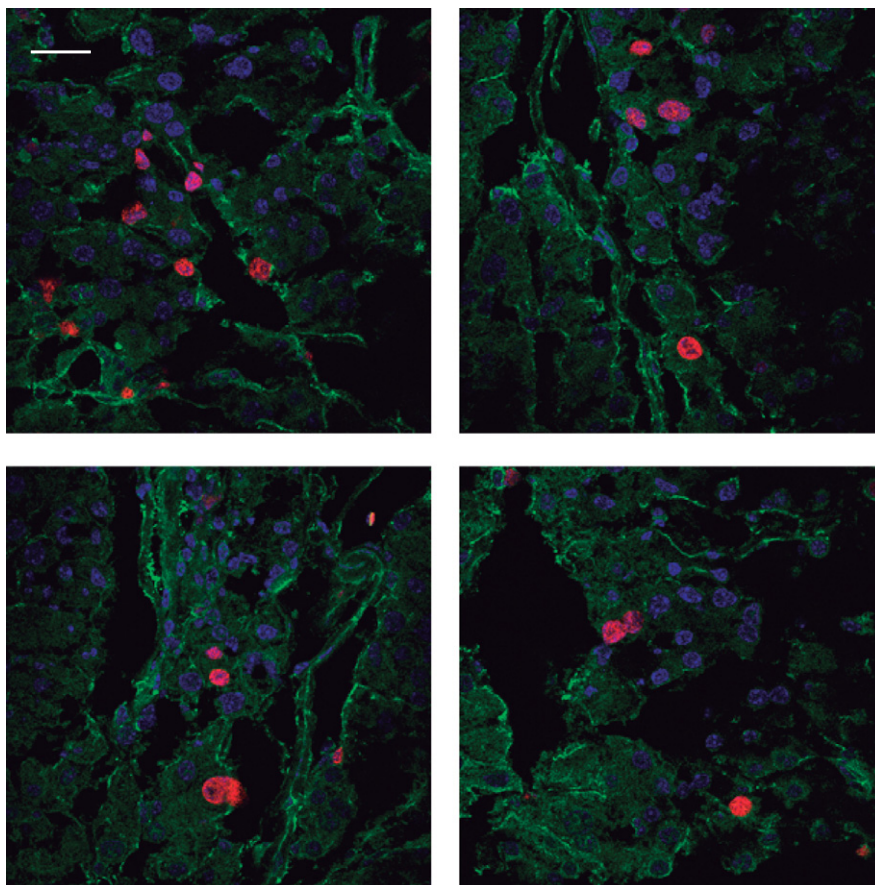


## Expanded View Figures



**Figure EV1. Heterologous AID expression does not promote carcinoma development.**

A Representative H/E stainings in colonic tissue from 75-week-old R26AID<sup>+/+</sup>VillinCRE<sup>+TG</sup> (top) and R26AID<sup>+KI</sup>VillinCRE<sup>+TG</sup> (bottom) mice. Scale bar: 500  $\mu$ m.  
 B Representative H/E stainings in pancreatic tissue from 75-week-old R26AID<sup>+/+</sup>p48CRE<sup>+KI</sup> (top) and R26AID<sup>+KI</sup>p48CRE<sup>+KI</sup> (bottom) mice. Scale bar: 500  $\mu$ m.



**Figure EV2. Ki67 is expressed in pancreatic epithelial cells.**

Representative immunofluorescence stainings of pancreatic tissue of 20-week-old R26AID<sup>+KI</sup>p48CRE<sup>+KI</sup> mice: blue, DAPI; red, Ki67; green, CK8. Scale bar: 50  $\mu$ m