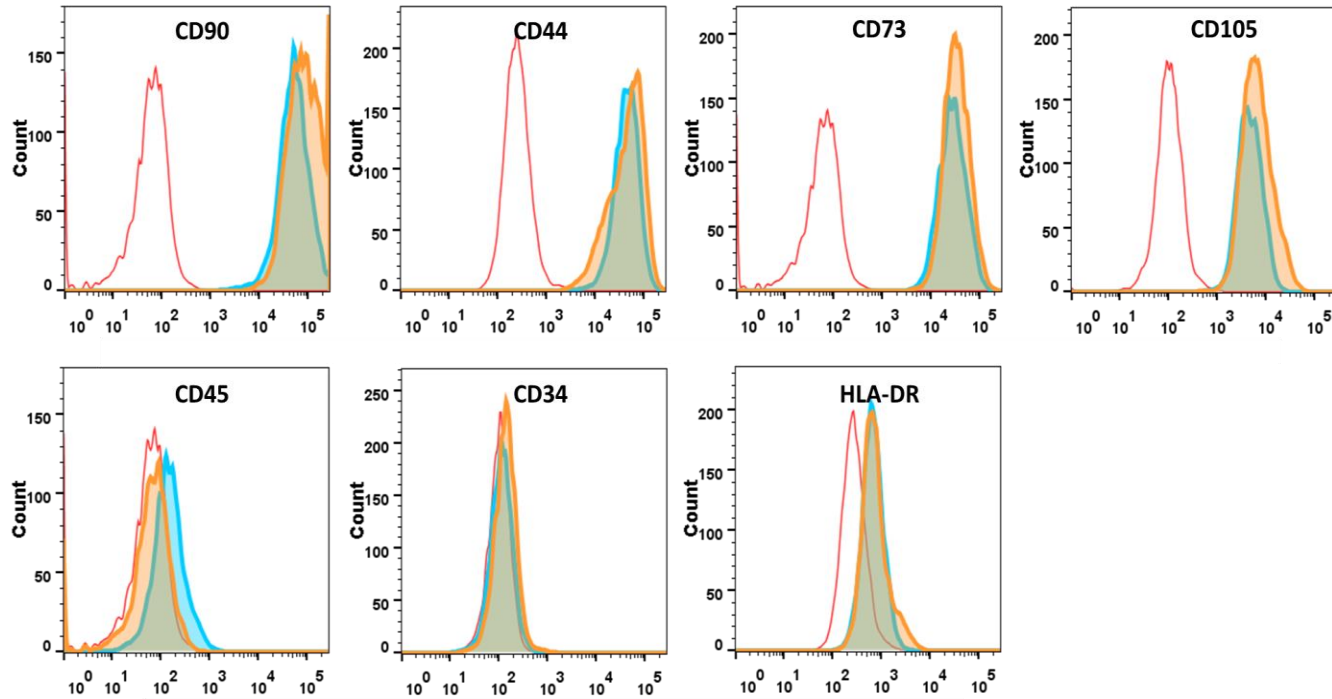
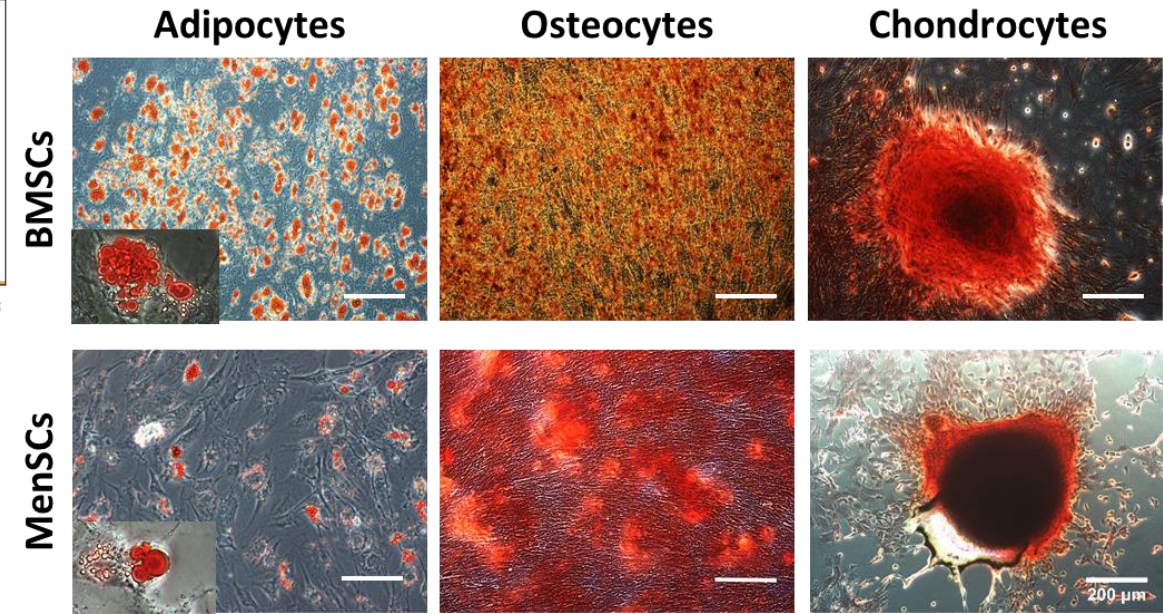


Additional File 1

(A)



(B)



Supplementary Figure 1. Characterization of MenSCs and BMSCs. Stem cells isolated from the menstrual fluid and bone marrow were characterized according to ISCT guidelines. **(A) MenSCs and BMSCs showed stem cell-like immunophenotypic markers.** FACS profile of a representative cells samples. Blue and orange filled histograms denote the fluorescent profile of the indicated antigens in MenSCs and BMSCs, respectively; red histograms correspond to isotype-matched controls. **(B) MenSCs and BMSCs displayed mesodermal differentiation.** Tri-lineage differentiation of a representative MenSCs and BMSCs samples. Cells were cultured with adipogenic, osteogenic and chondrogenic induction media for 14-21 days and then stained with Oil Red O, Alizarin Red and Safranin O staining, respectively. Scale Bar: 200 μ m.