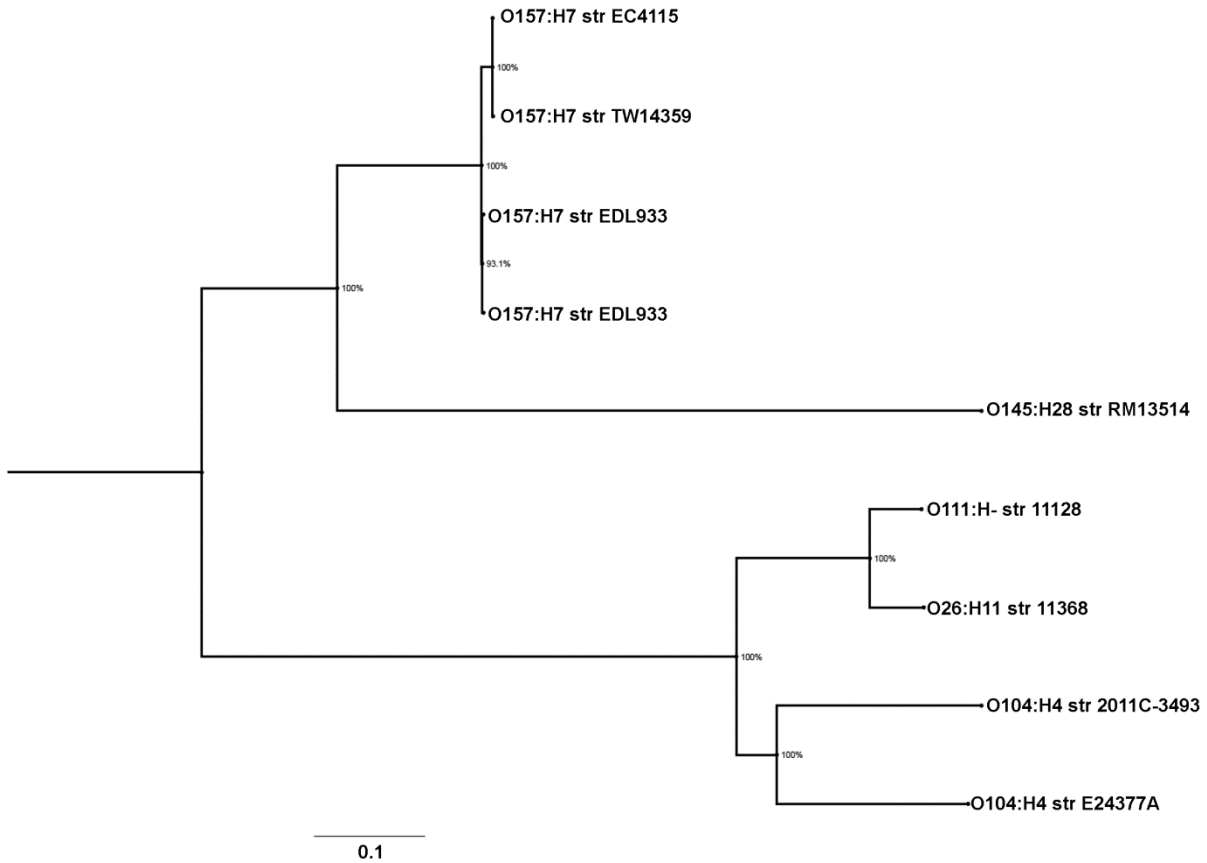


SUPPLEMENTRY FIGURE

Supplementary Figure 1. SNP tree from assembled *E. coli* genomes generated by the snpTree server (1) and visualized with FigTree (<http://tree.bio.ed.ac.uk/software/figtree>) showing the diversity of *E. coli* lineages with identical IEE sequences (see Fig. 1). Maximum-likelihood phylogeny was constructed from a 70,282 SNP matrix. The tree was rooted at midpoint. Bootstrap values are shown at the nodes.



References

1. Leekitcharoenphon, P., R. S. Kaas, M. C. Thomsen, C. Friis, S. Rasmussen, and F. M. Aarestrup. 2012. snpTree--a web-server to identify and construct SNP trees from whole genome sequence data. *BMC. Genomics* 13 Suppl 7:S6