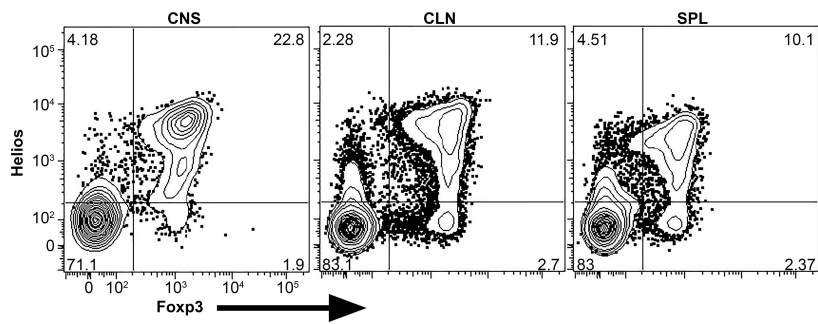


Supplemental Figure 1. Representative FACS plots showing the staining of MOG:IA^b tetramers and CD44 for indicated cell types for the indicated organs isolated from mice at peak of EAE. The tetramer positive gates were drawn using the CD8⁺ T cells as a negative control. Indicated cell types were gated as follows: CD4⁺ Tconv (DumpCD4⁺Foxp3-GFP⁻), CD4⁺ Tregs (DumpCD4⁺Foxp3-GFP⁺), and CD8⁺ T cells (DumpCD8⁺). Dump consisted of CD11b, CD11c, and CD19.



Supplemental Figure 2. Representative FACS plots showing the expression of Foxp3 and Helios for CD4⁺ Dump⁻ cells for the indicated organs isolated from mice at peak of EAE. Dump channel was made of CD11b, CD11c, and CD19.

Supplemental Table I. Two-sided Fisher's Exact p-values for the data presented in Figure 5.

	Naïve Tconv vs. Naïve Treg	d21 CNS Tconv vs. d21 CNS Treg
Foxp3	3.73E-100	6.41E-08
Gitr	8.57E-27	2.20E-41
Ctla4	7.70E-37	3.44E-27
Eos	6.52E-12	0.000163
CD25	1.61E-32	0.006423