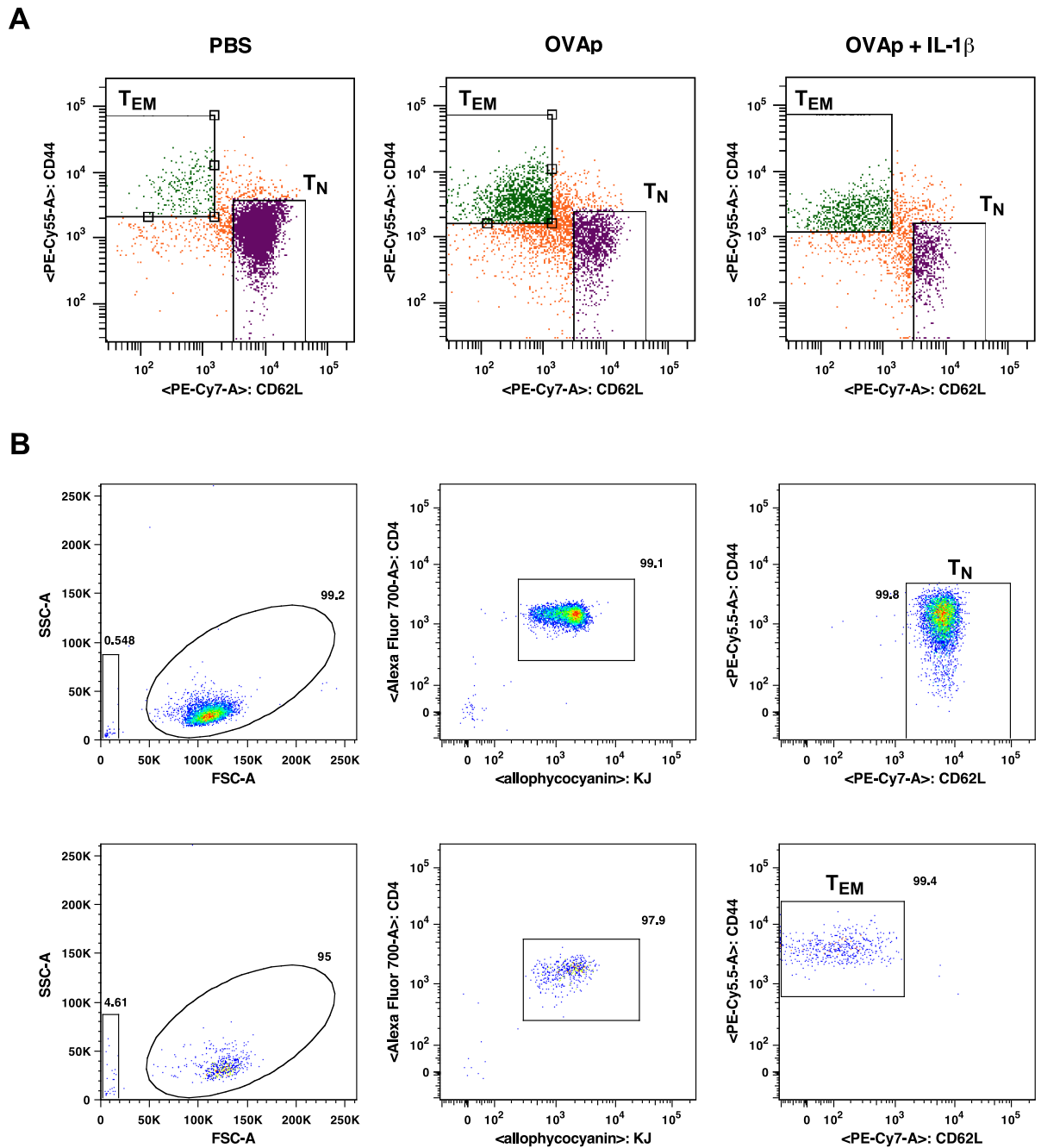
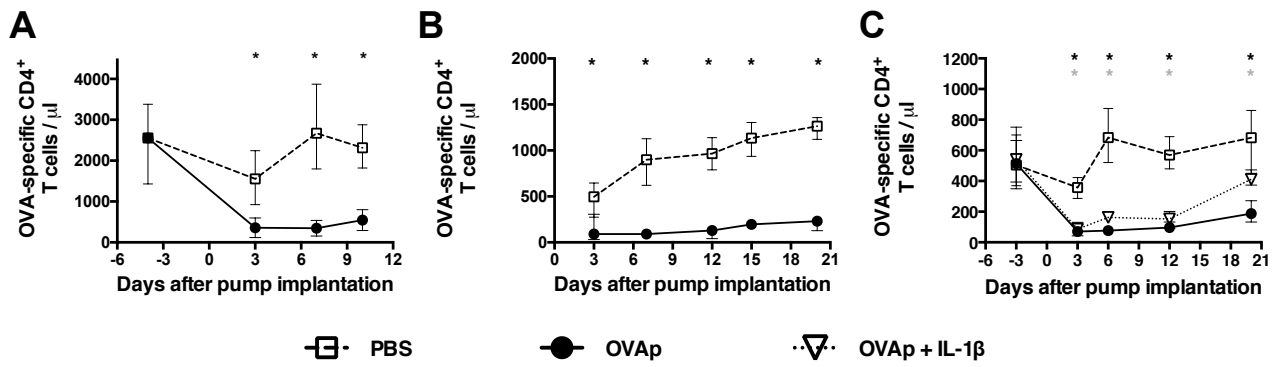


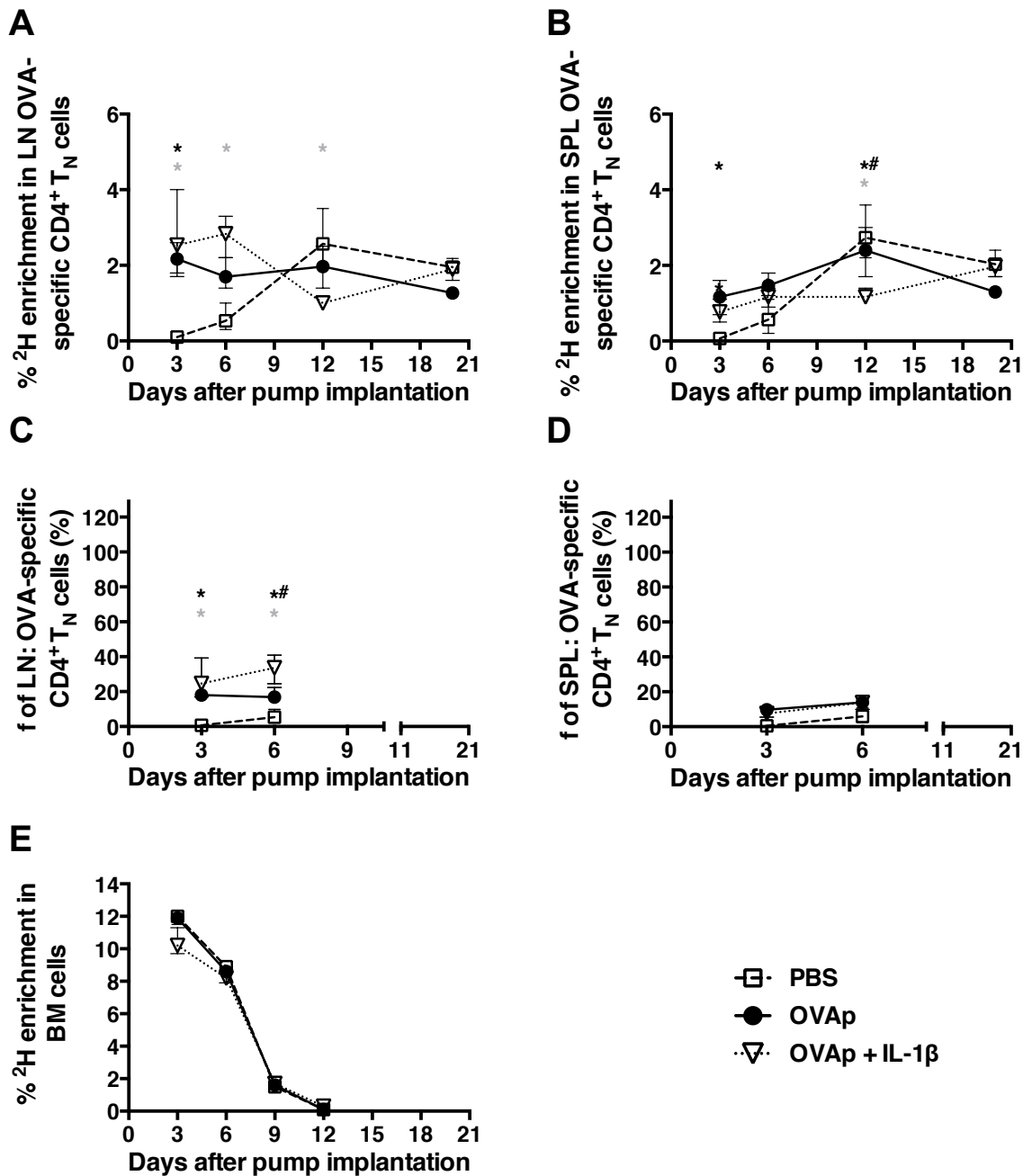
Supplemental Figure 1. (A) Weights of the mice over time (means and ranges). (B) Flow cytometric data showing CD4⁺ T cell expression of CD44 and CD62L in representative mice from each group. (C) Flow cytometric data showing CD4⁺ T cell expression of FoxP3 in representative mice from each group. (D) Flow cytometric data showing CD4⁺ T cell expression of Ki67 in representative mice from each group. *, p<0.05 PBS versus OVAp; grey asterisk, p<0.05 PBS versus OVAp + IL-1 β ; **#, p<0.05 OVAp versus OVAp + IL-1 β . Statistical analysis was conducted using a two-way ANOVA with the Tukey post-test to correct for multiple comparisons.



Supplemental Figure 2. Representative sort gates and purity checks. These data correspond to those shown in Figure 6 and Suppl. Fig. 4. **(A)** Sort gates for CD4⁺ T_N and T_{EM} cells as indicated in representative mice from each group. **(B)** Purity checks for CD4⁺ T_N (top) and T_{EM} (bottom) cells sorted at two different time points. The slim rectangular gate in the left panel shows different system noise levels.



Supplemental Figure 3. Peripheral blood OVA-specific CD4⁺ T cell numbers per microliter of blood are shown side-by-side from three independent experiments. Shown are means and ranges. *, p<0.05 PBS versus OVAp; grey asterix, p<0.05 PBS versus OVAp + IL-1 β ; *#, p<0.05 OVAp versus OVAp + IL-1 β . In **(A)** and **(B)**, statistical analysis was conducted using the Mann-Whitney U test. In **(C)**, statistical analysis was conducted using a two-way ANOVA with the Tukey post-test to correct for multiple comparisons. These latter data are also shown in Fig. 1A.



Supplemental Figure 4. *In vivo* labeling data for OVA-specific CD4⁺ T_N cells. These data correspond to those shown in Figure 6. **(A)** ²H enrichments of OVA-specific CD4⁺ T_N cells sorted from peripheral LNs. **(B)** ²H enrichments of OVA-specific CD4⁺ T_N cells sorted from the spleen. **(C)** Fractions of labeled OVA-specific CD4⁺ T_N cells sorted from peripheral LNs. **(D)** Fractions of labeled OVA-specific CD4⁺ T_N cells sorted from the spleen. **(E)** ²H enrichments of bone marrow cells. Shown are means and ranges. *, p<0.05 PBS versus OVAp; grey asterisk, p<0.05 PBS versus OVAp + IL-1β; **, p<0.05 OVAp versus OVAp + IL-1β. Statistical analysis was conducted using a two-way ANOVA with the Tukey post-test to correct for multiple comparisons.