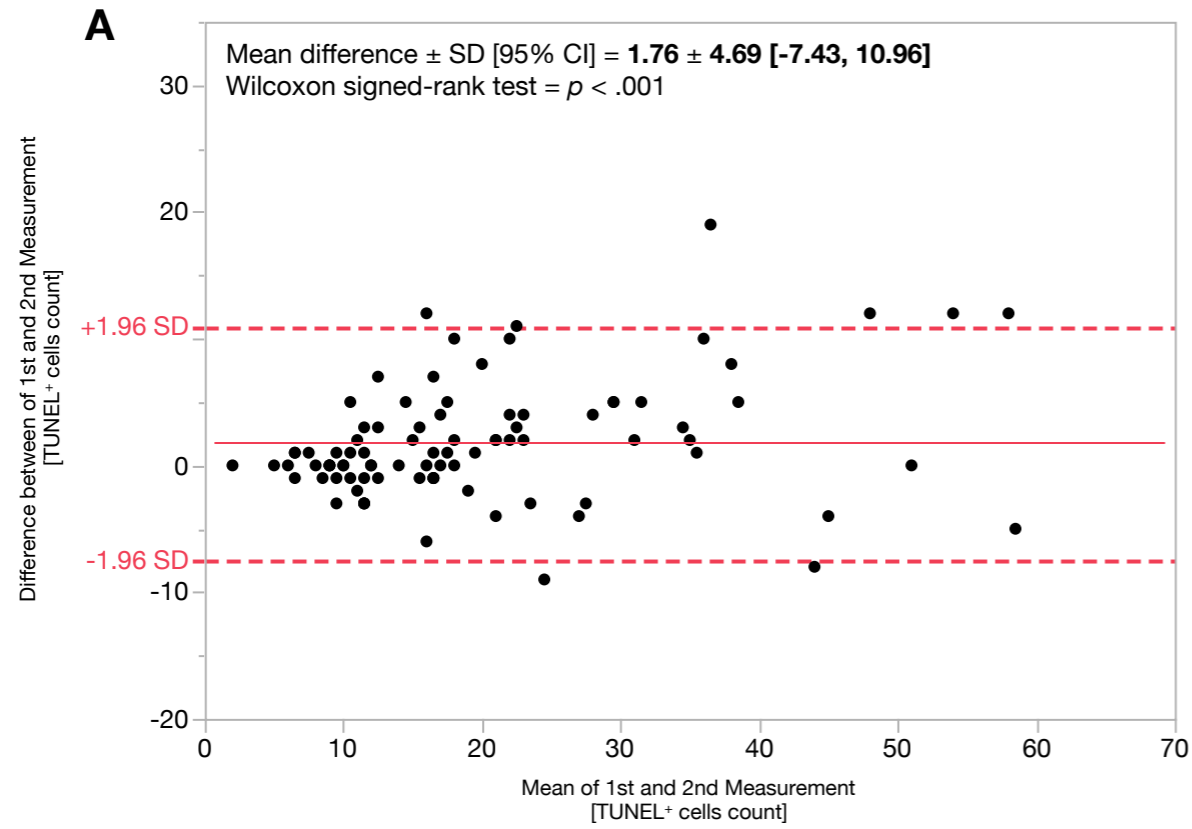
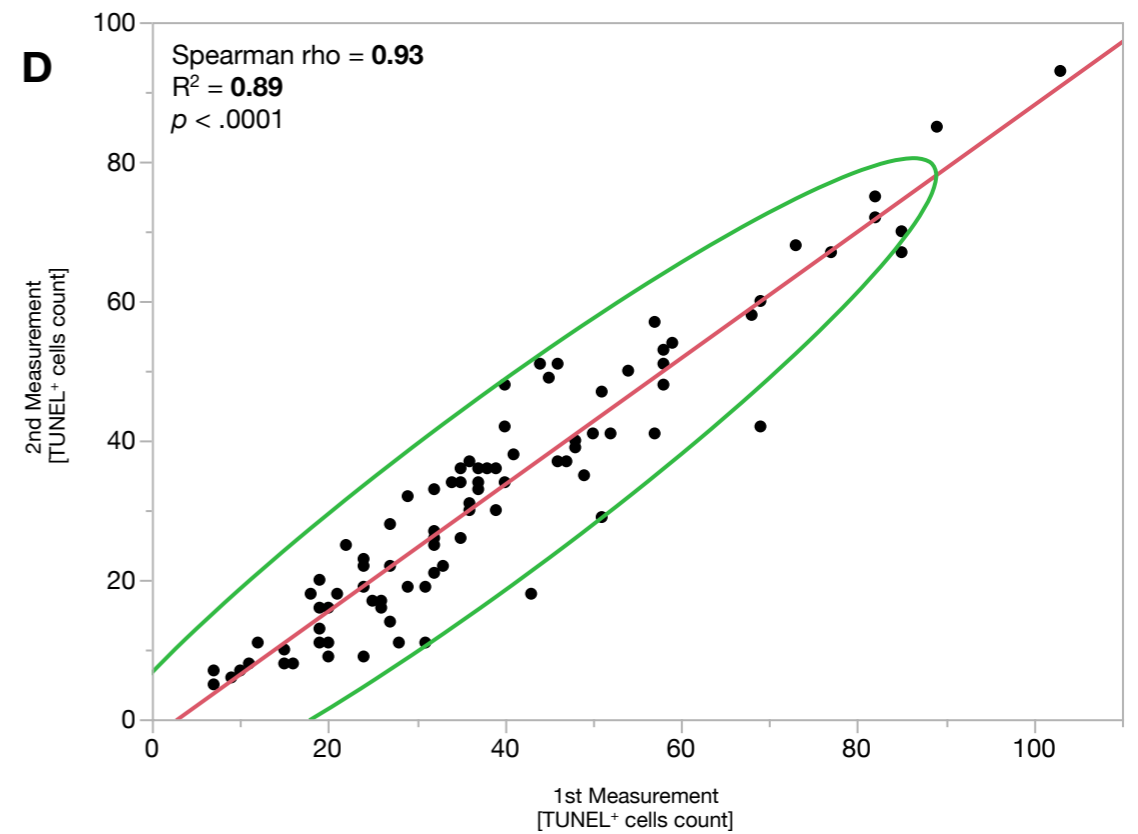
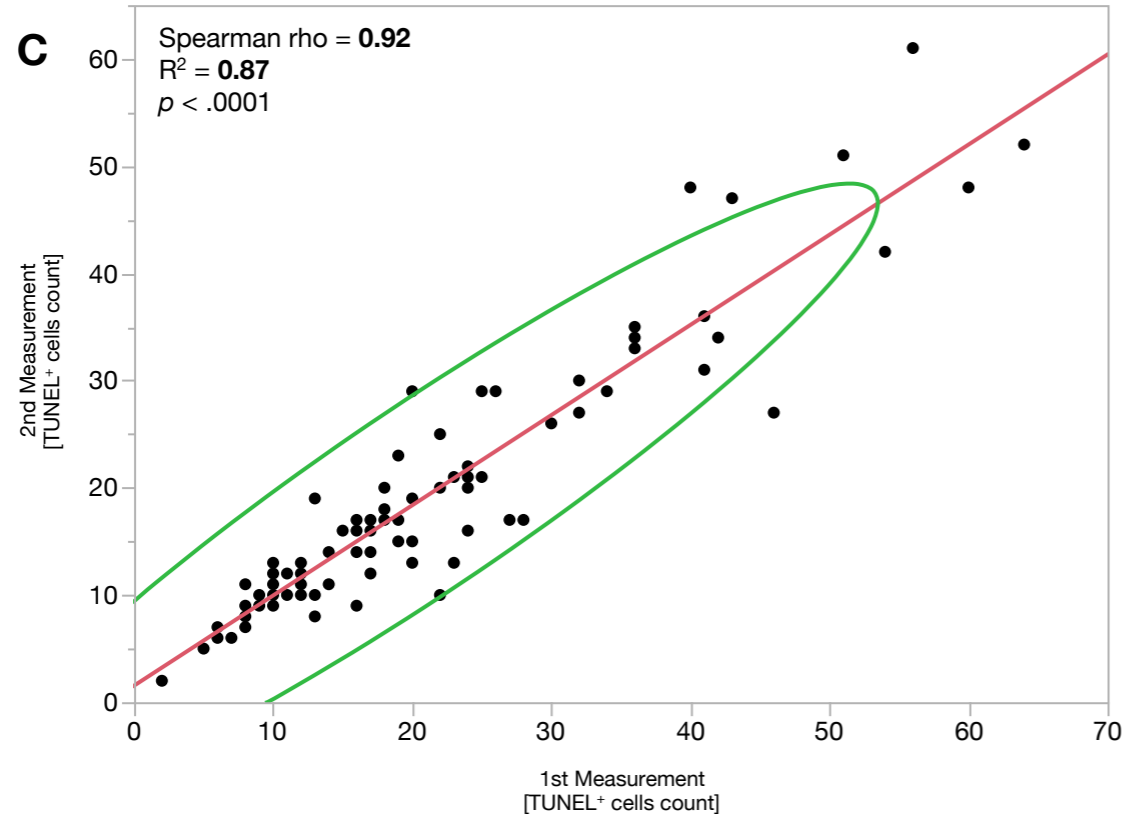
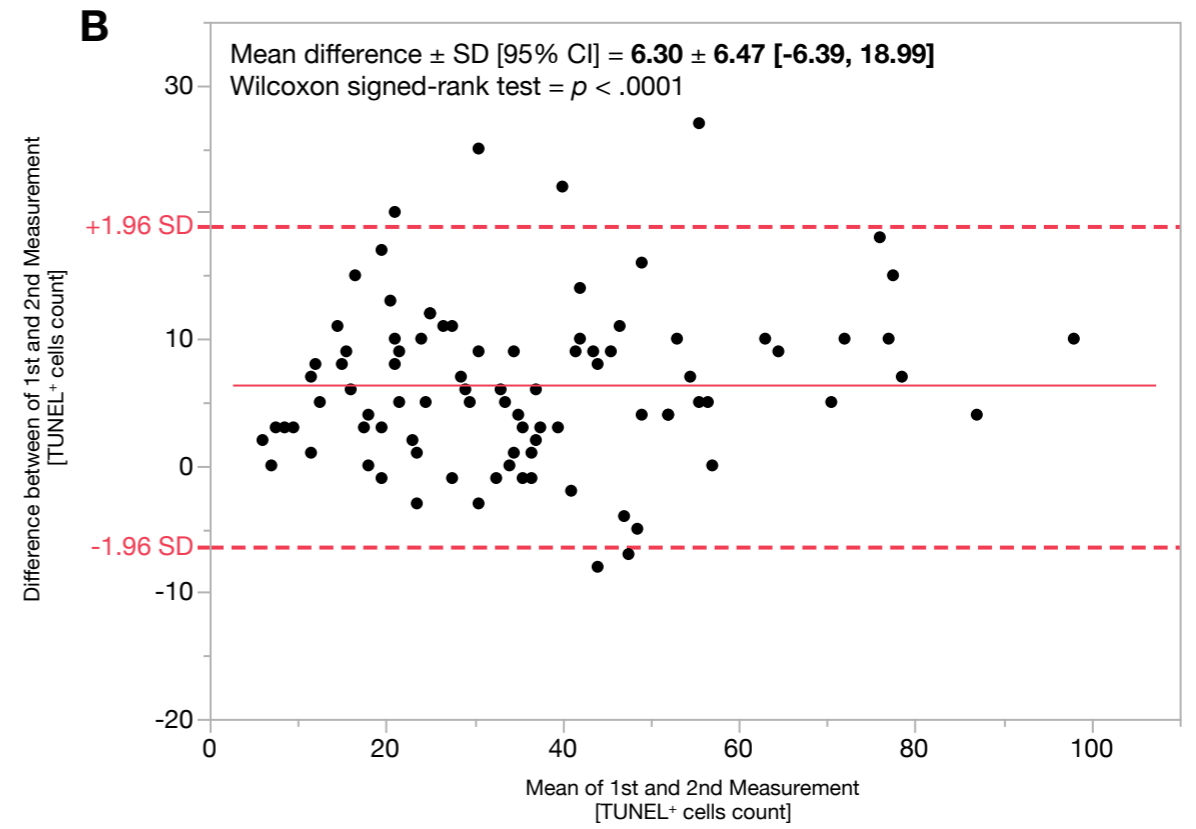


INEXPERIENCED OBSERVER



EXPERIENCED OBSERVER



1 Supplementary Figure 3. Inner Nuclear Layer (INL) Intra-observer Agreement and Correlation.

2 Bland-Altman plots for agreement analysis between the first and second INL measurements of the inexperienced (A)
3 and experienced observer (B). Red lines represent the mean difference or bias. Red dashed-lines represent the 95%
4 limit of agreement (± 1.96 standard deviation (SD)). Correlation analysis between first and second measurements of
5 inexperienced (C) and experienced observer (D). Red lines represent the fitted linear regression trendline. Green
6 lines represent the 95% confidence interval area.