

## SUPPLEMENTAL MATERIAL

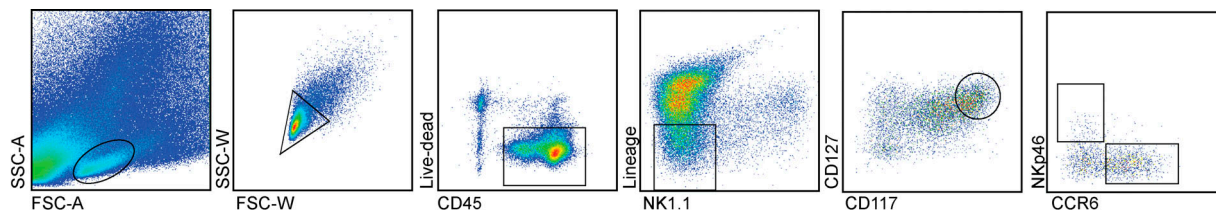
Aparicio-Domingo et al., <http://www.jem.org/cgi/content/full/jem.20150318/DC1>

Figure S1. Gating strategy for the isolation of ILC3s from small intestinal lamina propria.

Table S1. Primer sequences used for qPCR

Gene	Forward primer	Reverse primer
<i>Gapdh</i>	5'-TCAACGGCACAGTCAAG-3'	5'-GCTCCACCCTTCAAGTG-3'
<i>Socs3</i>	5'-GGAGCCCTTTGTAGACT-3'	5'-CGGAAACTTGCTGTG-3'
<i>Il22</i>	5'-CTCCCCAGTCAGACAG-3'	5'-CAATCGCCTTGATCTCTC-3'
<i>Csf2 (Gm-csf)</i>	5'-GACCCGCTGAAGATATT-3'	5'-ATCCGCATAGGTGTAAGT-3'
<i>Tnf (Tnfa)</i>	5'-GGGGGCTTCCAGAACT-3'	5'-GGCCATAGAAGTATGAG-3'
<i>Ncr1 (NKp46)</i>	5'-CCCCCTGAAACTGGTAGTA-3'	5'-GTGGCAGTCTTCAGTTGG-3'
<i>Il17</i>	5'-CTTGGCGAAAAGTGA-3'	5'-TTGCTGGATGAGAACAGAA-3'
<i>Ifng</i>	5'-CAAAGGATGGTGACATGA-3'	5'-GGGTTGTTGACCTCAAAGT-3'
<i>Rorc</i>	5'-GTGGGGACAAGTCATCTG-3'	5'-CGGCCAAACTTGACAG-3'
<i>Ltb</i>	5'-ACGTCGGGTTGAGAAGA-3'	5'-GGATGTGGAGGCTAGATTC-3'
<i>Bax</i>	5'-AAGGCCTGTGCACTAA-3'	5'-GAGGCGGTGAGGACTC-3'
<i>Bcl2l1 (Bclx)</i>	5'-CGTGGCCTTTTCTCC-3'	5'-GGCTGCTGCATTGTTCC-3'
<i>Wnt5a</i>	5'-CGTGGACGCTAGAGAAAG-3'	5'-AGCCAGAACTCCATGAC-3'