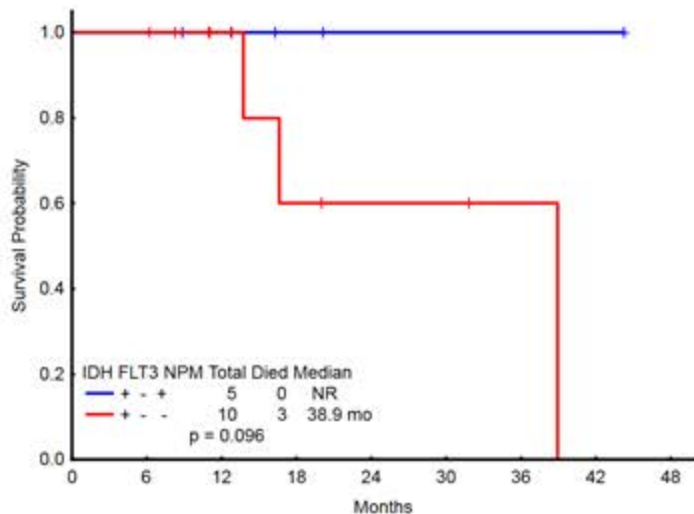
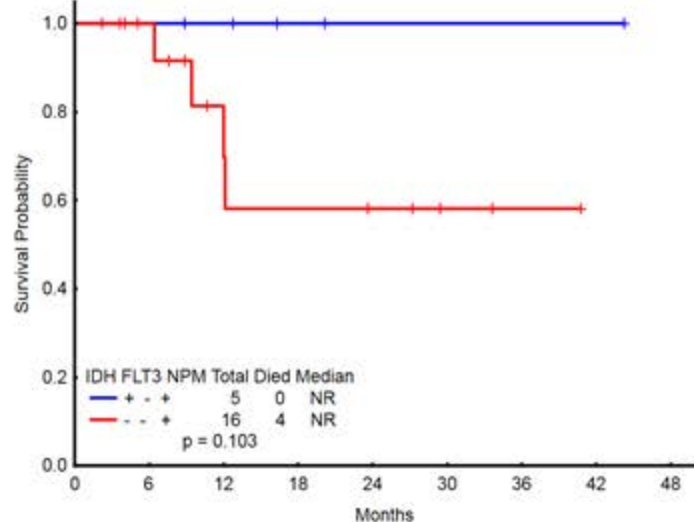


Supplemental Figure 1: OS of newly diagnosed AML patients with intermediate-risk cytogenetics and age < 60 only
IDH+/NPM1+ compared to IDH+ alone

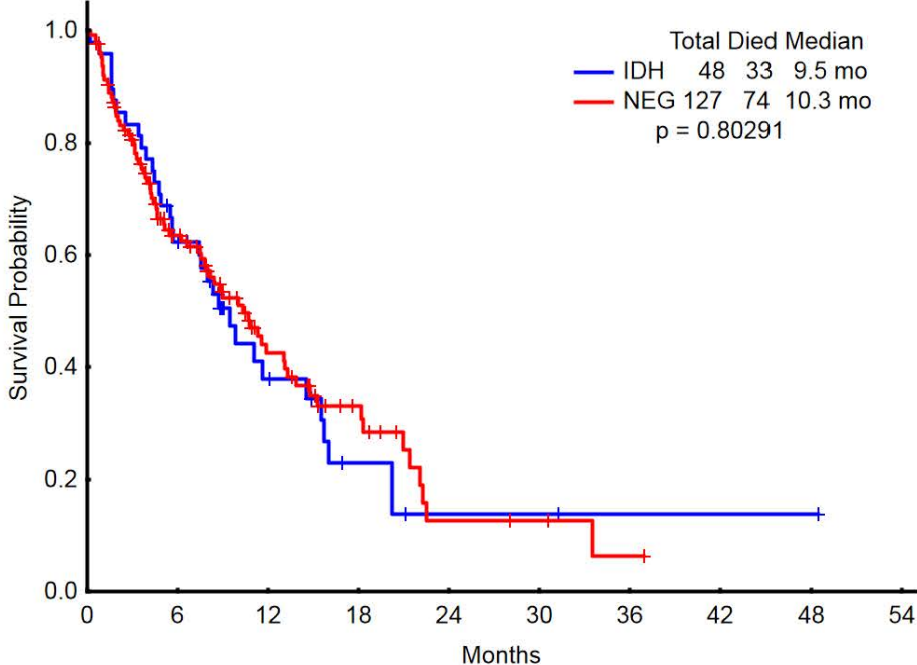
(a) IDH+/NPM1+ compared to IDH+ alone



(b) IDH+/NPM1+ compared to NPM1+ alone



Supplemental Figure 2: Overall survival of AML patients receiving hypomethylating agent-based induction therapy by IDH status



Supplemental Table I : Treatments received by induction and salvage treatment status

	Induction	S1	S2+
High-dose cytarabine based (e.g. IA, FIA, CIA, FLAG-IDA, +/- sorafenib)	273	39	58
7+3 based	5	0	0
HMA-based (e.g. 5-day DAC, 10-day DAC, AZA, DAC + vosaroxin, SGI-110, sapacitabine)	175	34	40
Cladribine + low-dose cytarabine	54	1	0
Clofarabine + low-dose cytarabine	24	2	1
Other low-dose cytarabine based regimen	15	26	4
Other (e.g. AC220, ASP2215, EPZ-5676, Crenolanib)	16	5	38