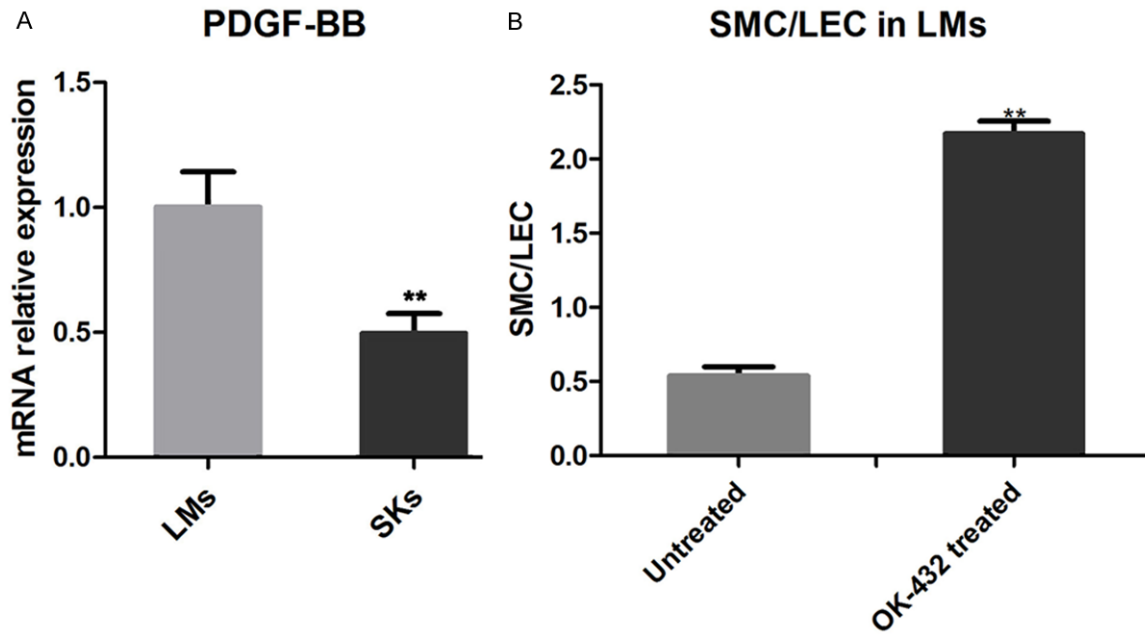
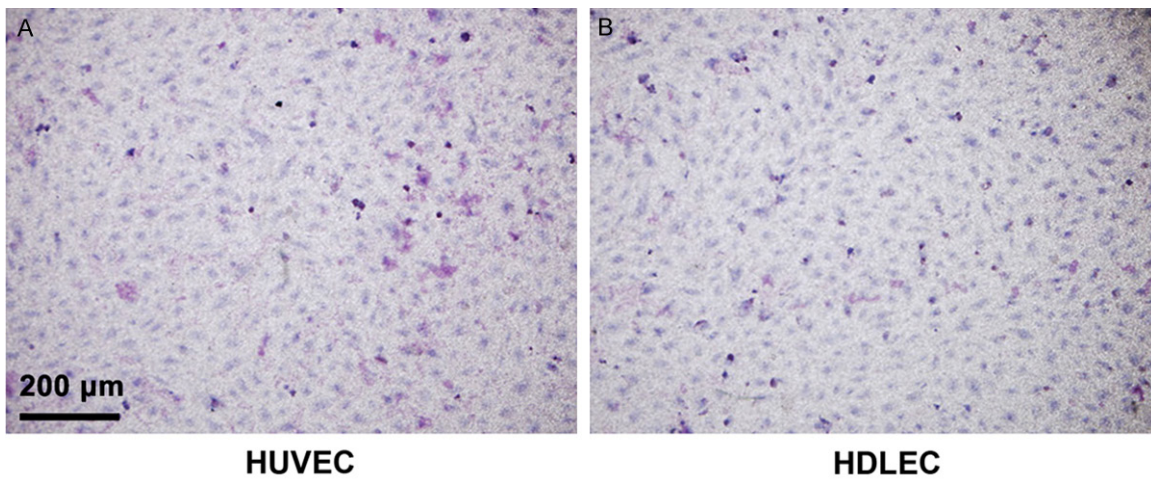


Pathology of lymphatic malformation



Supplementary Figure 1. A. The mRNA relative expression of PDGF-BB in LMs and skins. N=3. B. SMC/LEC in OK-432 untreated and treated LMs. N=3.



Supplementary Figure 2. Methylene blue staining on membranes of transwell chambers of HUVEC (A) and HDLEC (B).