

Supplementary File

Identifying RA patients with moderate disease activity at risk of significant radiographic progression despite methotrexate treatment

B. Fautrel, H. Nab, Y. Brault, G. Gallo

Contents

Table S1 Patients with SRP by baseline erosion score

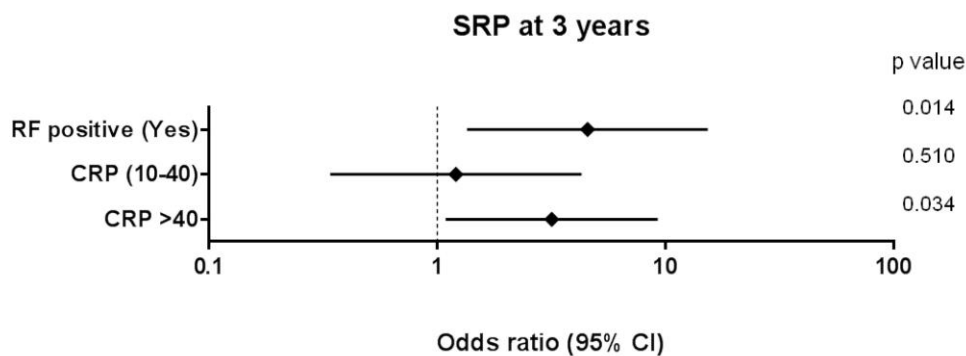
Figure S1 Multivariate analysis: tertile baseline predictors of SRP after 3 years in patients with moderate disease activity despite MTX treatment

Table S1 Patients with SRP by baseline erosion score

Baseline erosion score	SRP after 2 years, n (%)				SRP after 3 years, n (%)			
	No	Yes	Fisher's Exact Test P value	Phi coefficient	No	Yes	Fisher's Exact Test P value	Phi coefficient
0	14 (73.7)	5 (26.3)	1.000	-0.003	12 (63.2)	7 (36.8)	0.794	-0.026
>0	57 (74.0)	20 (26.0)			51 (66.2)	26 (33.8)		
0	14 (73.7)	5 (26.3)	0.811	0.072	12 (63.2)	7 (36.8)	0.118	0.211
>0-<4	16 (80.0)	4 (20.0)			17 (85.0)	3 (15.0)		
≥4	41 (71.9)	16 (28.1)			34 (59.6)	23 (40.4)		

The phi coefficient is a measure of association derived from the Pearson chi-square. SRP, significant radiographic progression.

Figure S1 Multivariate analysis: tertile baseline predictors of SRP after 3 years in patient with moderate disease activity despite MTX treatment



SRP, significant radiographic progression; MTX, methotrexate; RF, rheumatoid arthritis; CRP, C-reactive protein; CI, confidence interval.