

Figure S1. Results from the *in vitro* antibacterial assay with various gastrointestinal pathogens are depicted as log cfu/ml for untreated and treated bacteria over a 24 hour period. All bismuth treatments were tested at 35 mg/ml. (◆) Control; (■) BSS; (▲) BiOCl; (×) BSS+Vehicle; (●) BiOCl+Vehicle

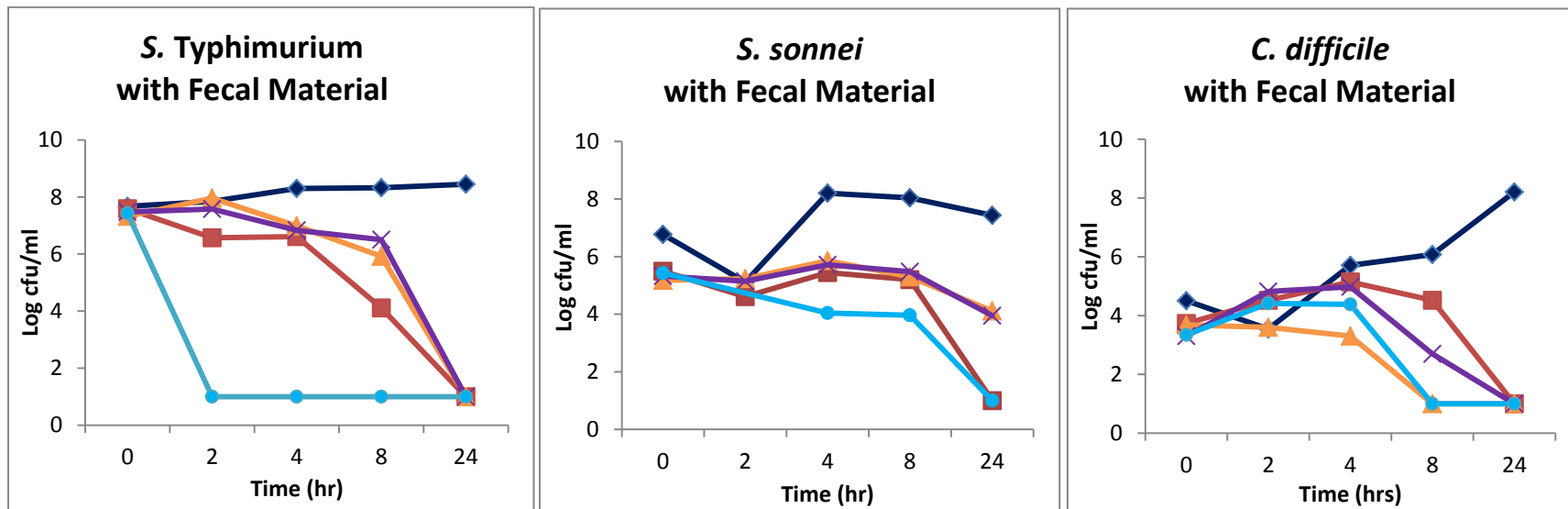


Figure S2. Results from the *in vitro* antibacterial assay with enteric pathogens in the presence of fecal material are depicted as log cfu/ml for untreated and treated bacteria over a 24 hour period. All bismuth treatments were tested at 35 mg/ml. (◆) Control; (■) BSS; (▲) BiOCl; (×) BSS+Vehicle; (●) BiOCl+Vehicle

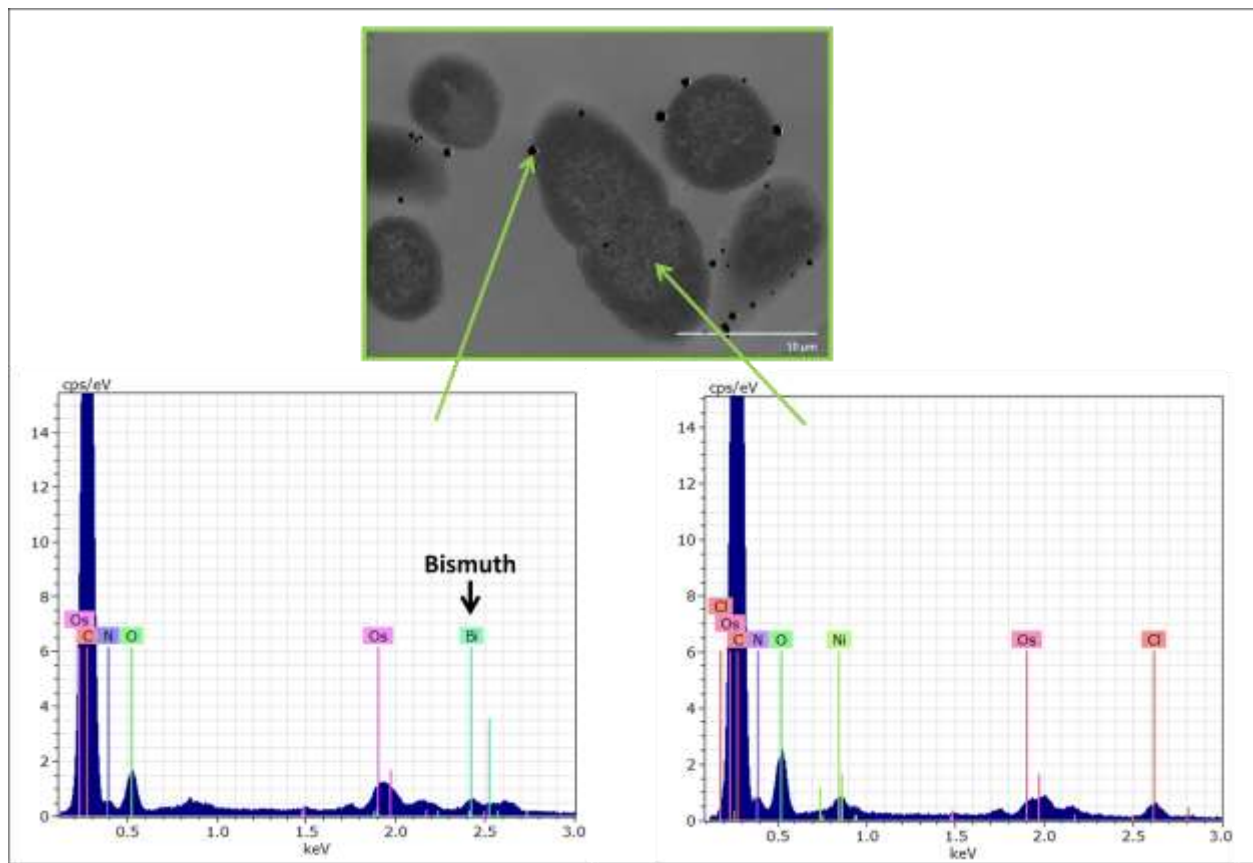


Figure S3. EDS histograms illustrate that a peak identified as bismuth appears when analyzing an individual dark particle whereas that same peak is absent when analyzing a random area of the bacterial cell with no dark particles present.