

Fig. S1

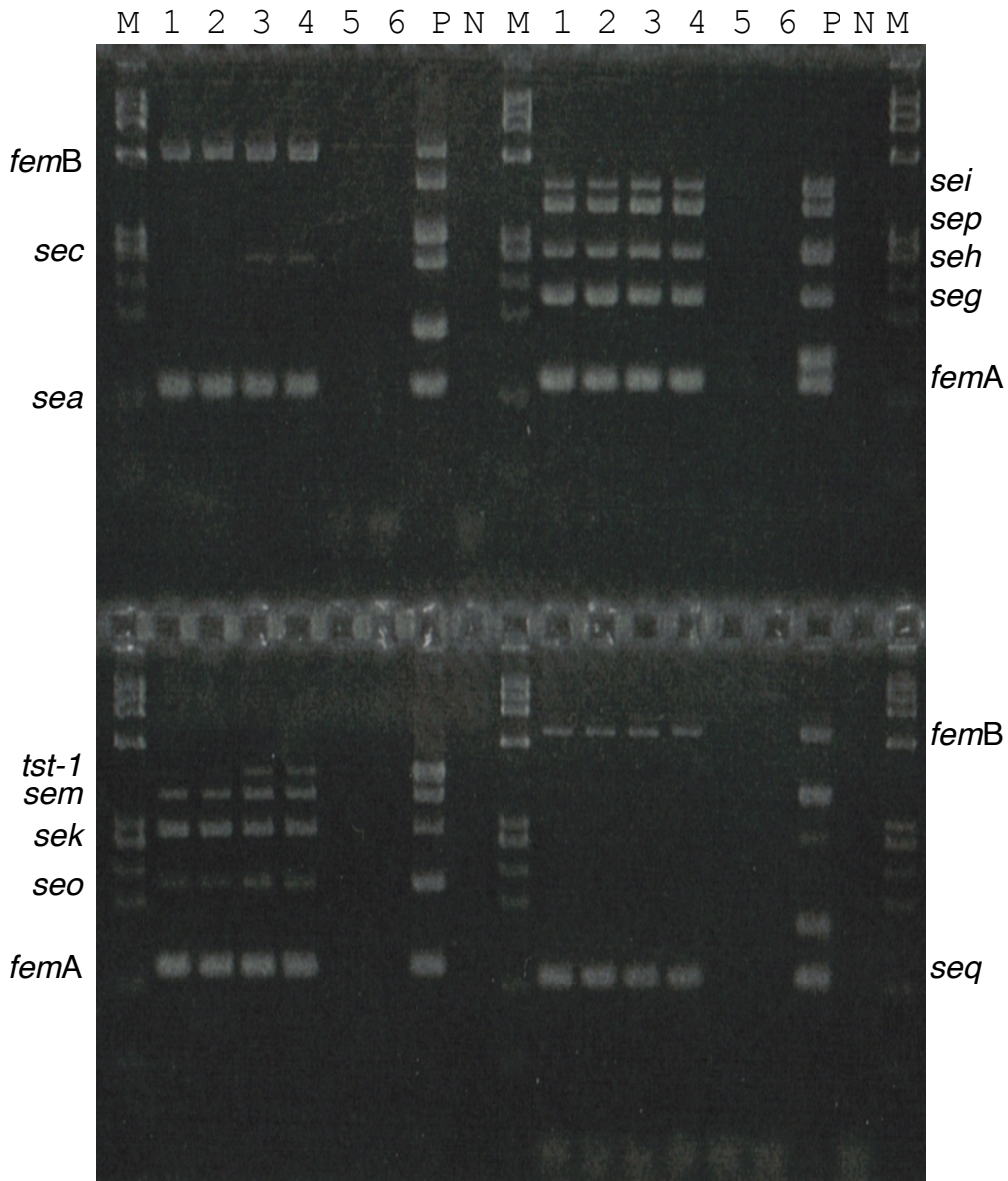


Figure S1. Multiplex PCR of milk samples. PCR detection of various SE genes was performed. Electrophoresis was carried out with 3% agarose gel and 1x TBE buffer. M, Molecular marker (ϕ x174-HaeIII (Takara)); 1~6, milk sample; P, Positive control (gDNA mixture which contained all of the SEs/SEIs genes); N, Negative control, No DNA (water).

Fig. S2

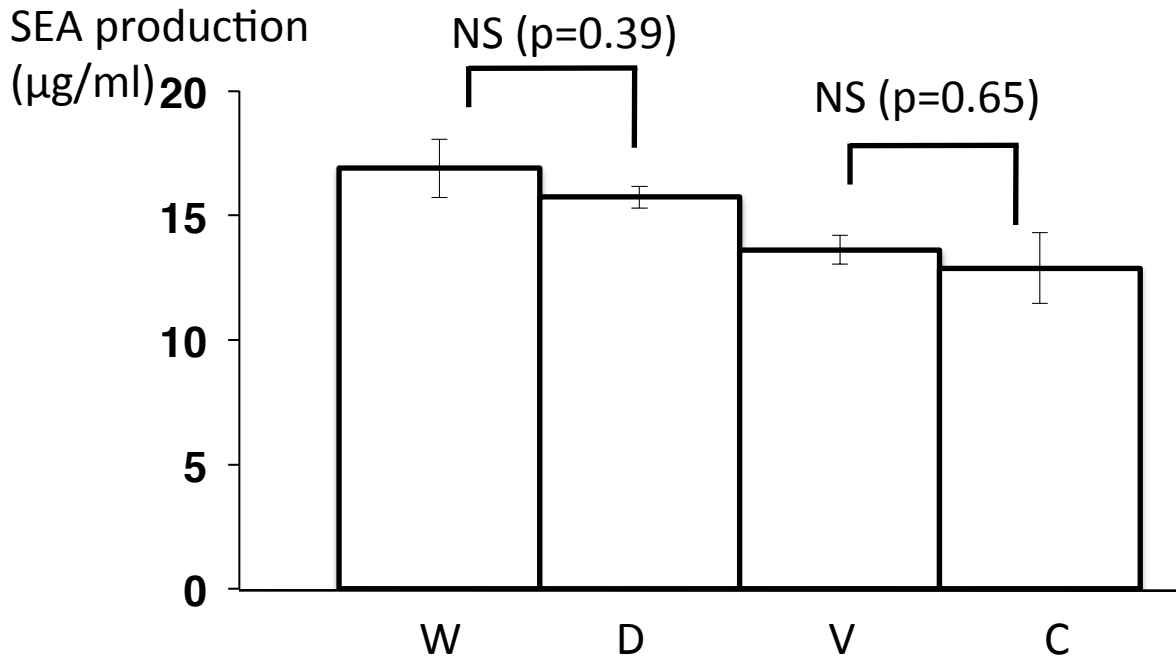


Figure S2. Effect of Rot on SEA production in No. 10. SEA production in media of Rot mutants was compared with that of wild type. *S. aureus* SFP clone No. 10 and its Rot mutants were cultured in medium and the filtrate of the cultures were used for ELISA. The average and standard error of No. 10 WT and mutants are shown. All cultures and all ELISA were repeated two times and two times, respectively (each sample: n=4). W: No. 10 wild type (Value in this figure was the same as that in Fig 1), D: *rot* deletion mutants, V: vector control mutants (deletion mutant + pKAT), C: complement mutants (deletion mutant + pKAT::*rot*). Student's t-Test NS: No significance.