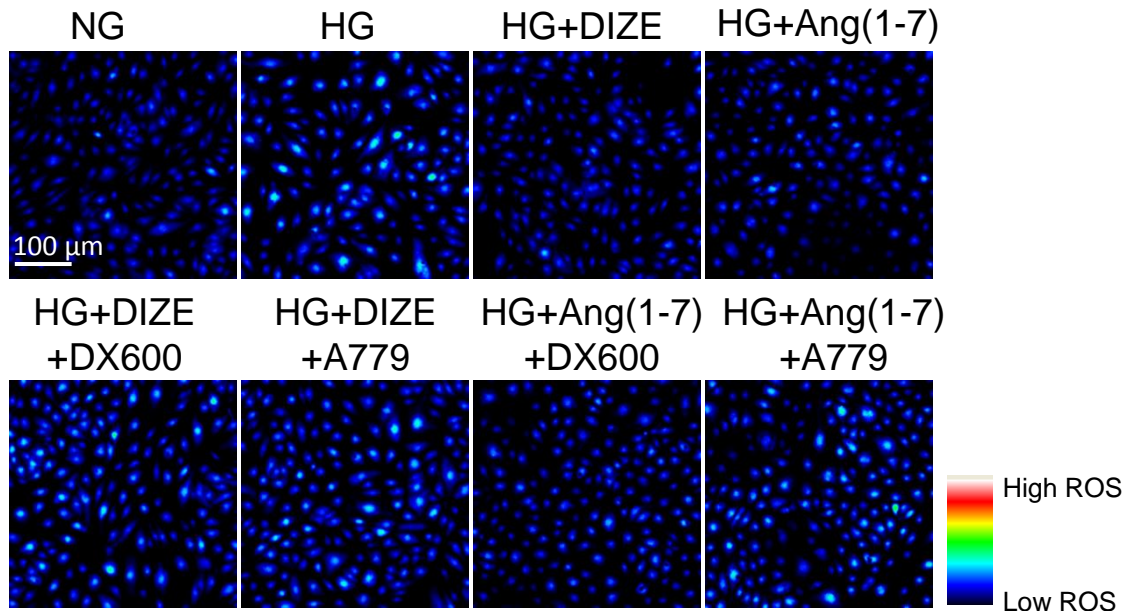
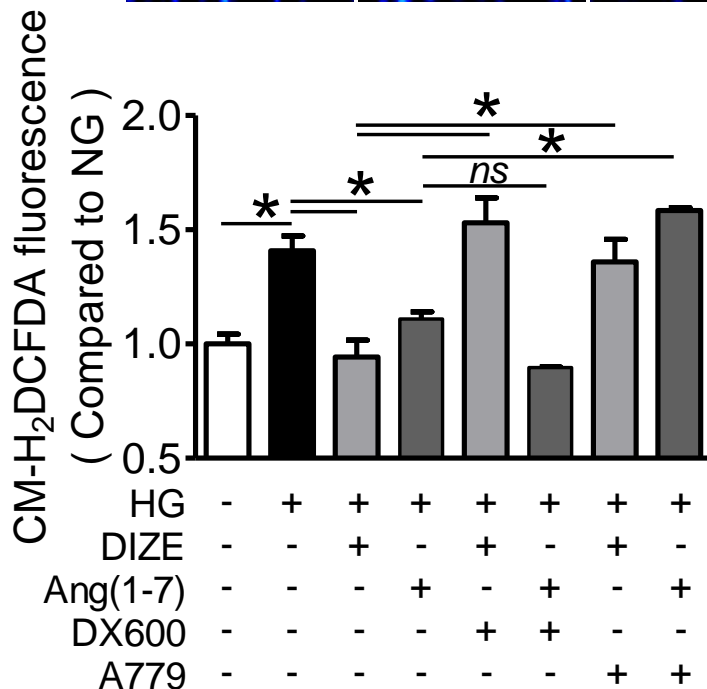


Supplementary Fig. S11

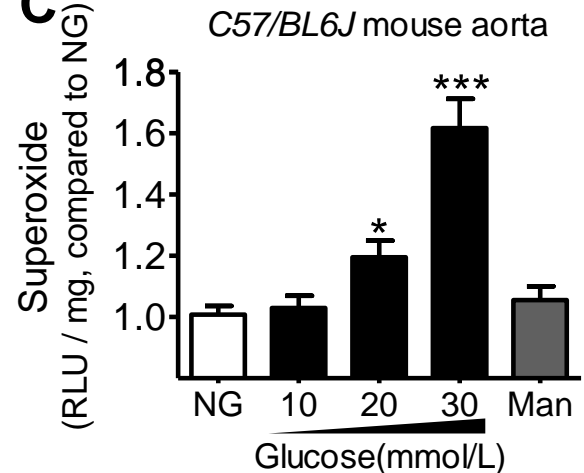
A



B



C



Supplementary Fig. S11. ROS level measured by CM-H₂DCFDA fluorescence dye in HUVECs following various treatments as shown above the images. NG: normal glucose, 5 mmol/L; HG: high glucose, 30mmol/L; DIZE: 100 μmol/L; Ang(1-7): 1 μmol/L; DX600: 1 μmol/L; A779: 1 μmol/L. **(A)** Representative fluorescence images and **(B)** summarized data showing HG-stimulated ROS production in HUVECs after different treatments. Data are means ± SEM from 6 individual experiments. **p*<0.05. **(C)** Superoxide anion production measured by chemiluminescence in C57BL/6J mouse aortas following exposure to glucose at different concentration and manitol (30 mmol/L) for 48 hours. RLU: relative luminescence units, n=4, **p*<0.05.