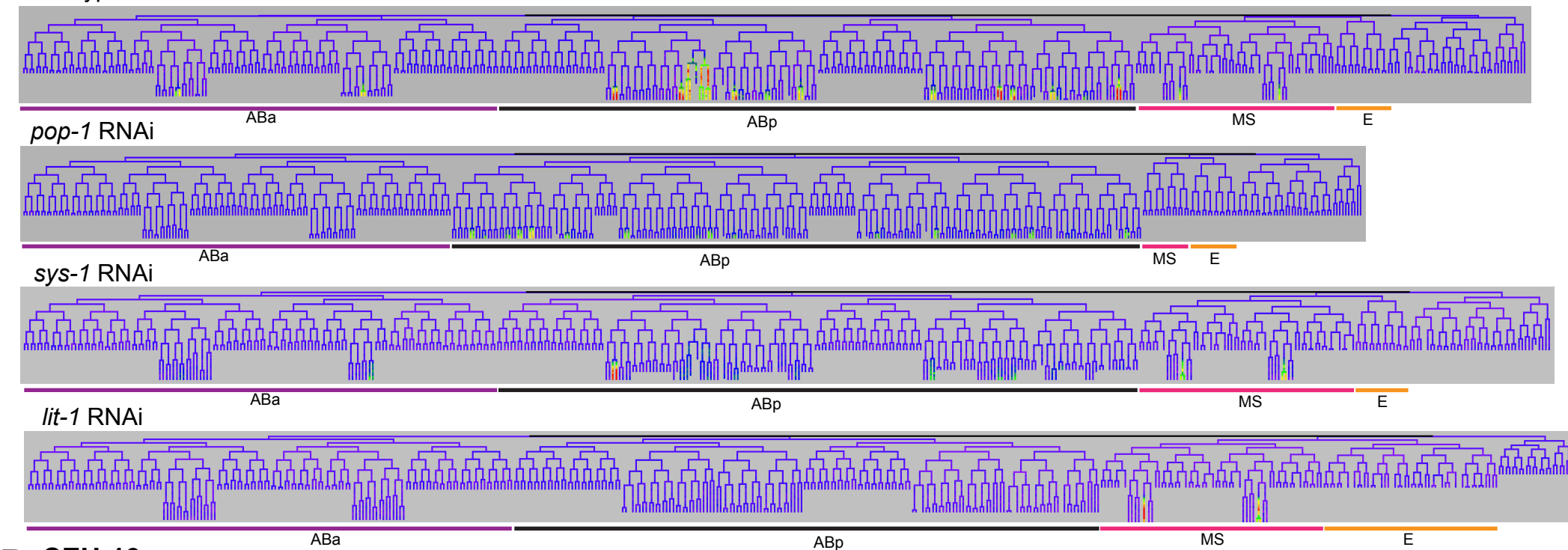
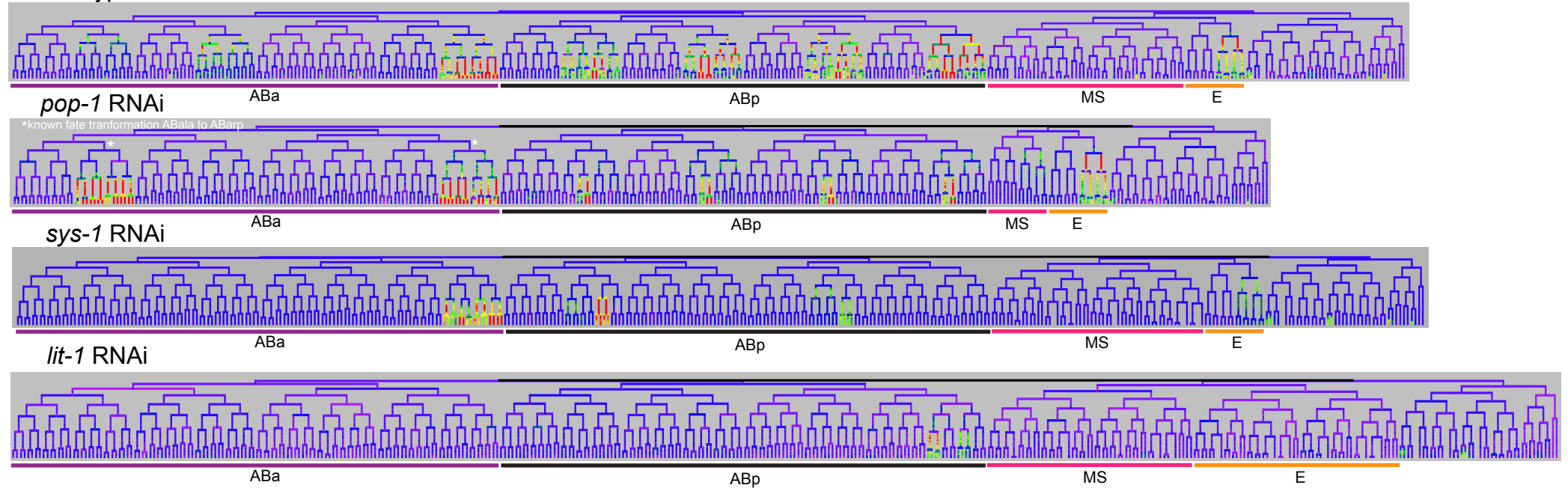


**Figure S11:** Expression patterns for all posteriorly-expressed target genes in wildtype embryos and after RNAi.

**A CEH-6**  
Wildtype Expressed in ABa, ABp, MS; Strongly activated by *pop-1/sys-1* in ABa, weakly activated by *pop-1/sys-1* in ABp, unregulated in MS

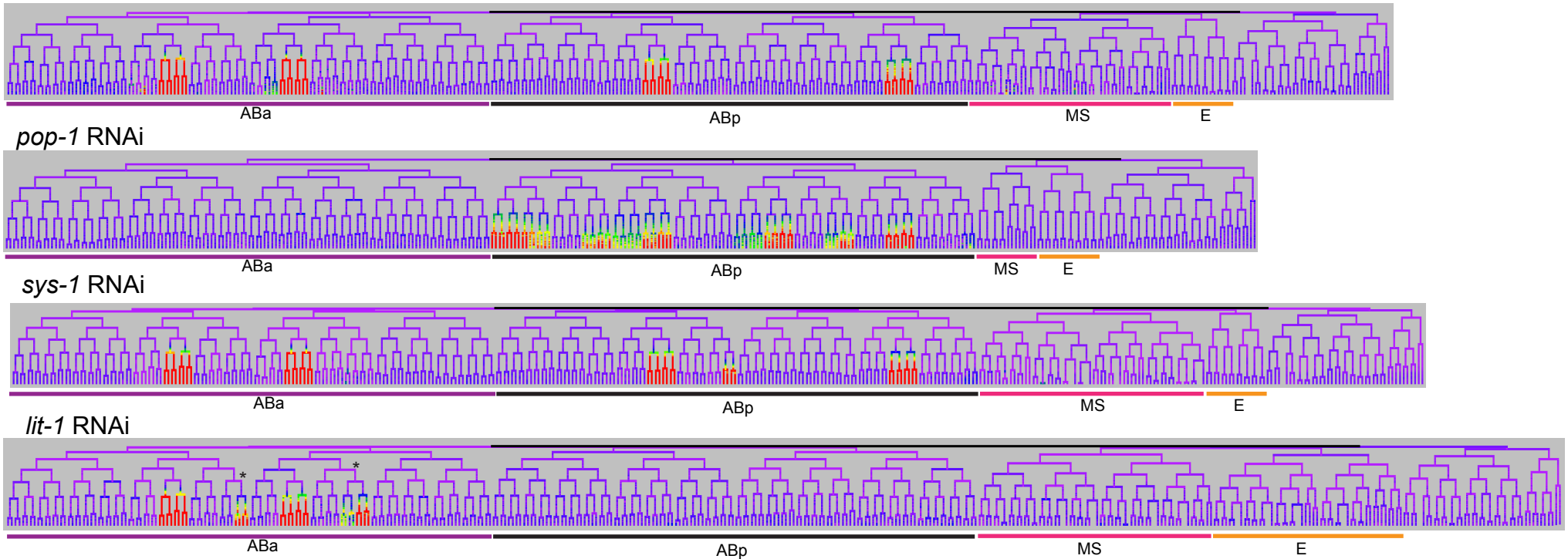


**B CEH-13**  
Wildtype Expressed in ABa, ABp, E; Moderately activated by *pop-1/sys-1* in ABp, unregulated in ABa, E

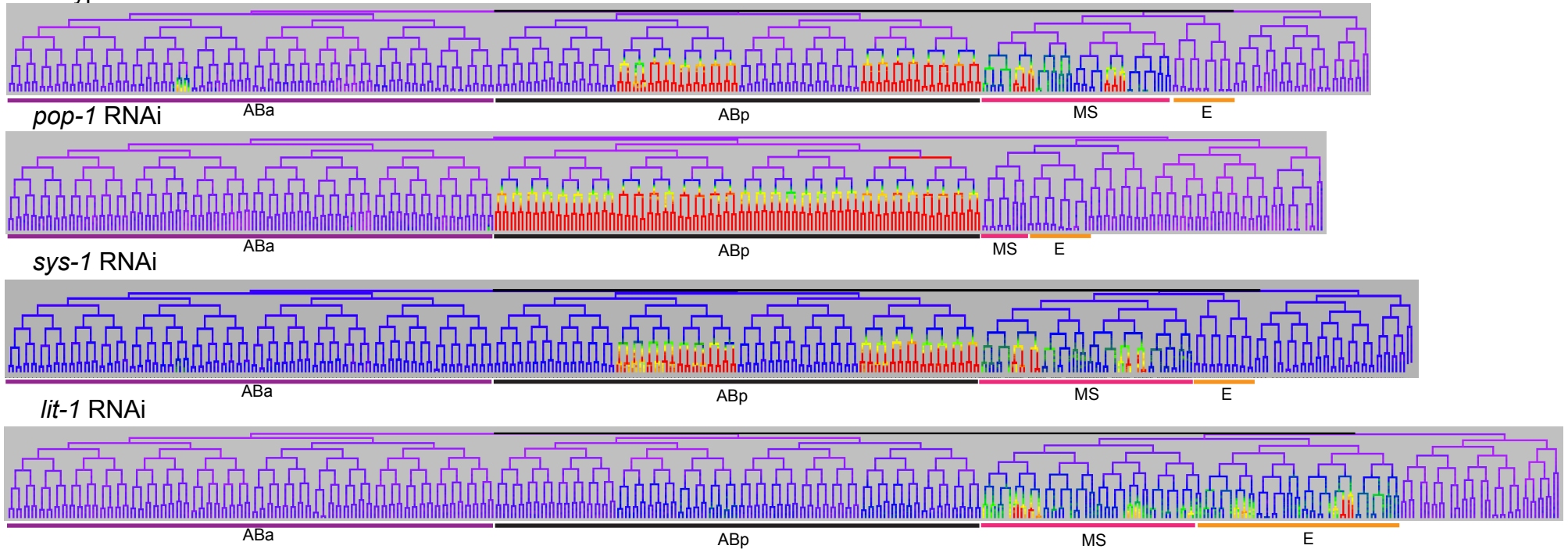


# Figure S11C

**CEH-27** Expressed in ABa, ABp; Indirectly regulated by *pop-1* in ABa, Moderately repressed by *pop-1* in ABp, Wildtype



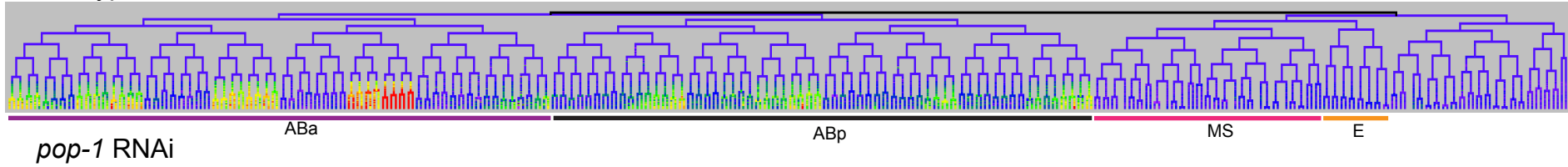
**D** **CEH-36** Expressed in ABa, ABp, MS; Strongly activated by *pop-1/sys-1* in ABa, strongly repressed by *pop-1* in ABp, unregulated in MS Wildtype



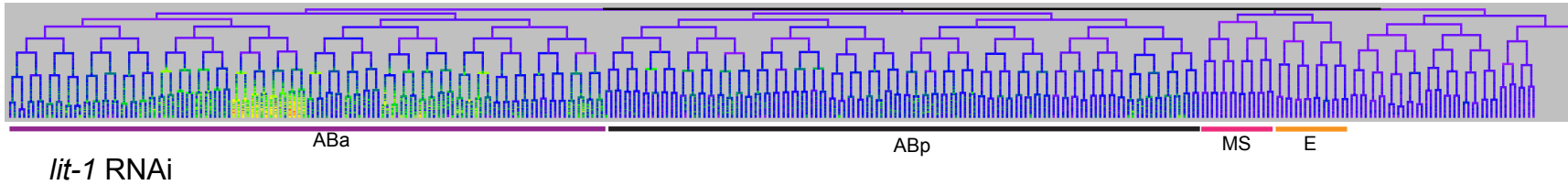
# Figure S11E

**CEH-43** Expressed in ABa, ABp; Indirectly regulated by *pop-1*

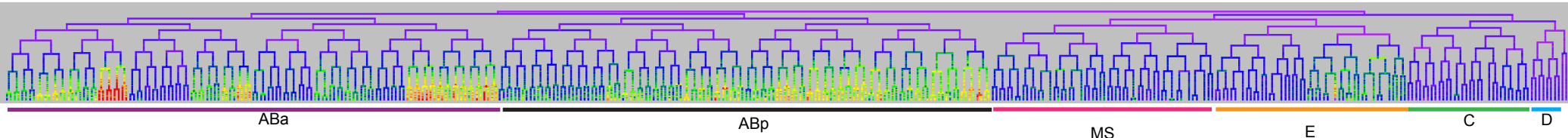
Wildtype



*pop-1* RNAi

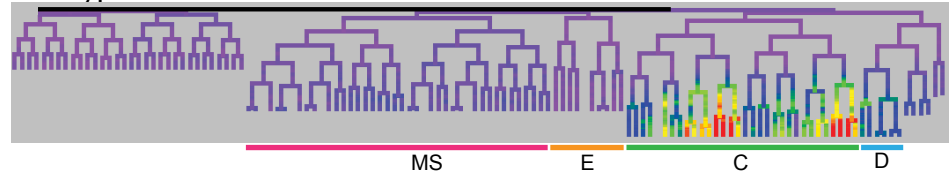


*lit-1* RNAi

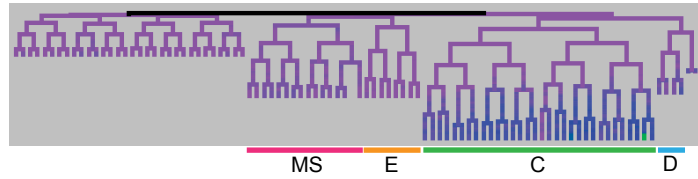


**F CWN-1** Expressed in C, D; Moderately activated by *pop-1* in C, D

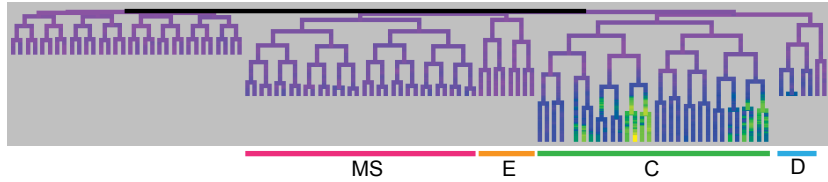
Wildtype



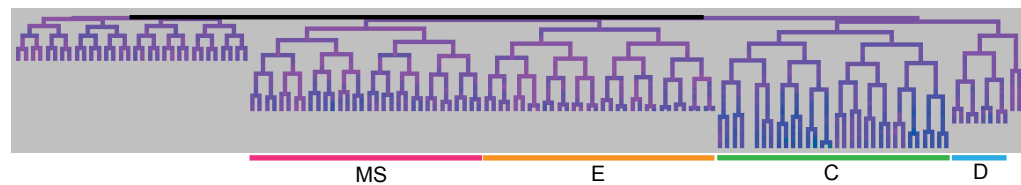
*pop-1* RNAi



*sys-1* RNAi



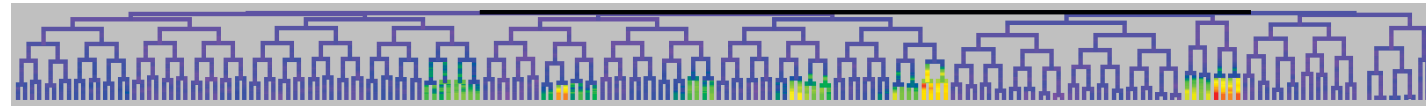
*lit-1* RNAi



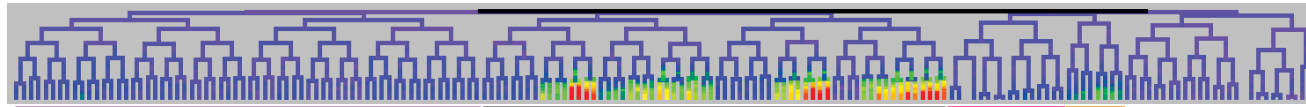
# Figure S11G

**CWN-2** Expressed in ABa, ABp, E; Weakly activated by *pop-1/sys-1* in ABa and E, weakly repressed by *pop-1* in ABp

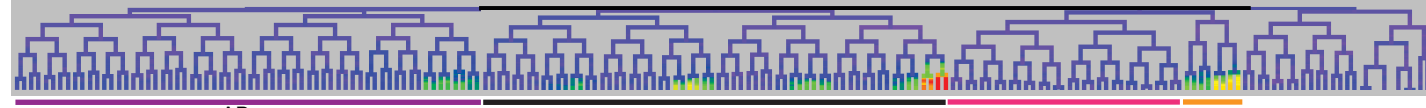
Wildtype



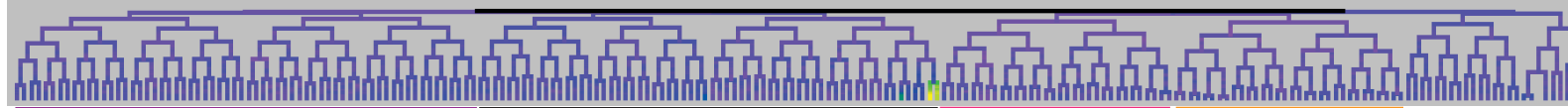
*pop-1* RNAi



*sys-1* RNAi

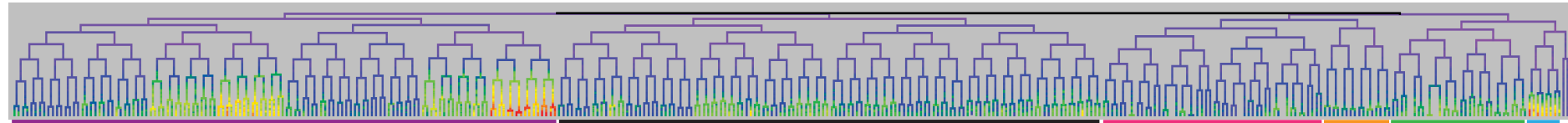


*lit-1* RNAi

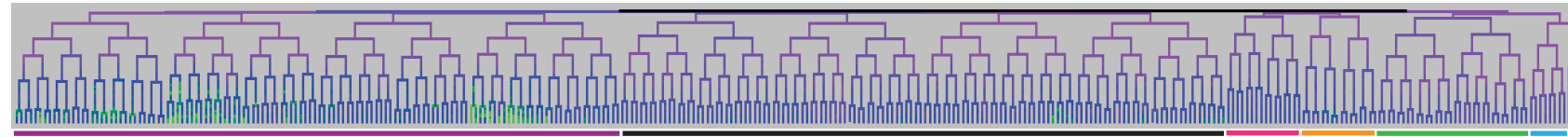


**H ELT-6** Expressed in ABa, ABp, MS, C, D; Moderately activated by *pop-1/sys-1* in ABa, ABp, MS, C, D

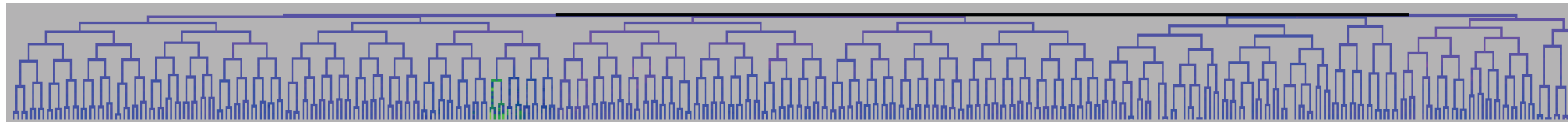
Wildtype



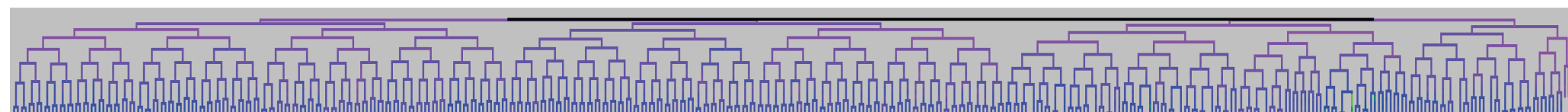
*pop-1* RNAi



*sys-1* RNAi



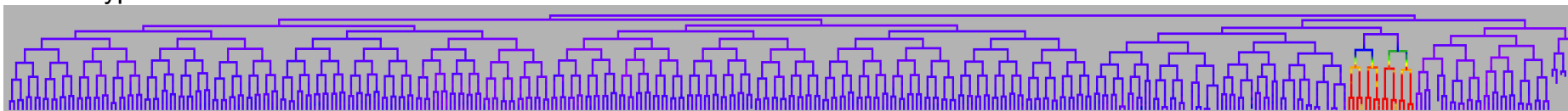
*lit-1* RNAi



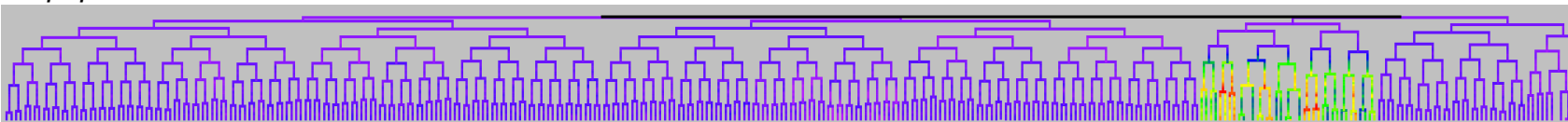
# Figure S11I

**END-1** Expressed in E; Activated by *pop-1* in E, repressed by *pop-1* in MS

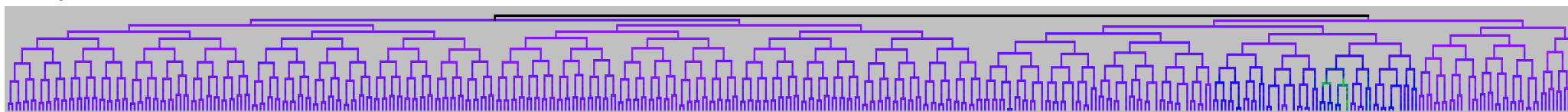
Wildtype



*pop-1* RNAi



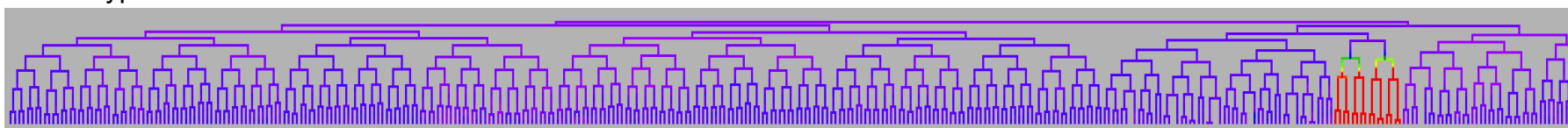
*lit-1* RNAi



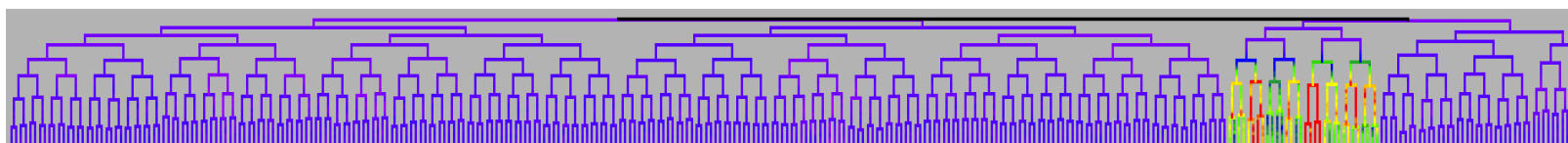
# J

**END-3** Expressed in E; Activated by *pop-1* in E, repressed by *pop-1* in MS

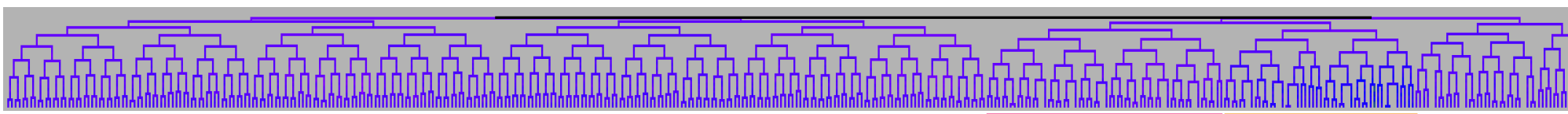
Wildtype



*pop-1* RNAi



*lit-1* RNAi

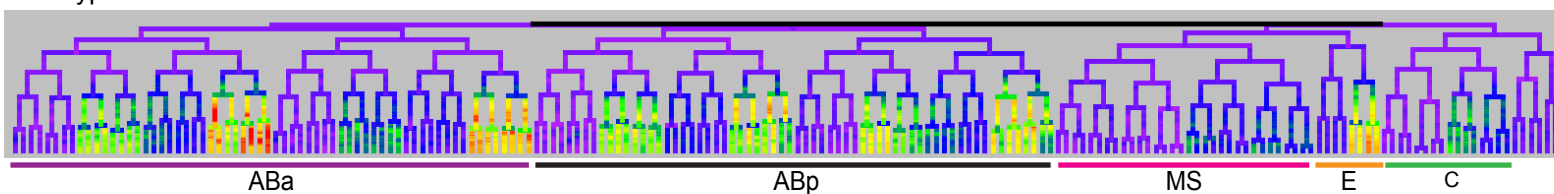


## Figure S11K

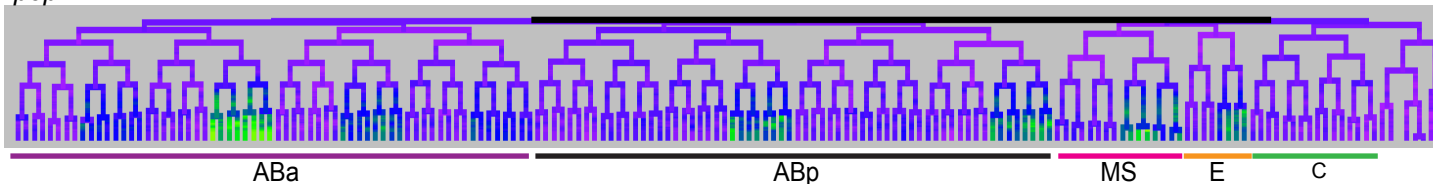
### ETS-7

Wildtype

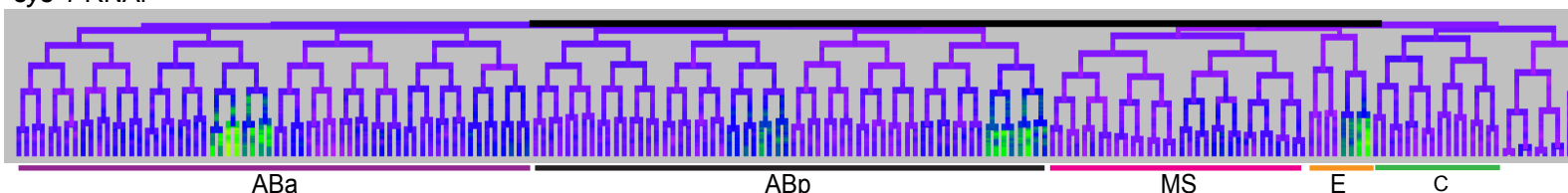
Expressed in ABa, ABp, E, C; Moderately activated by *pop-1/sys-1* in ABa, ABp, E, C



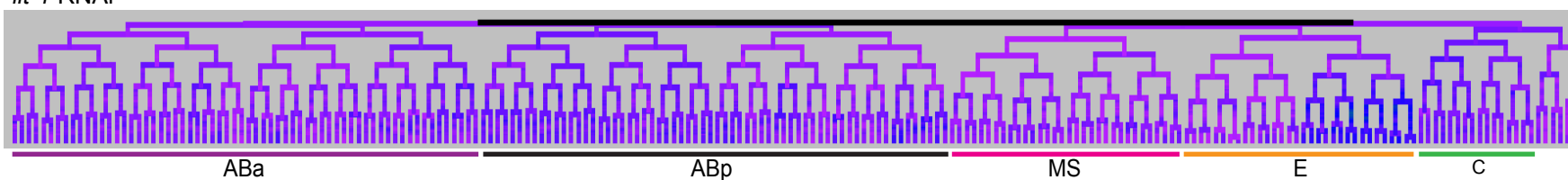
*pop-1* RNAi



*sys-1* RNAi



*lit-1* RNAi

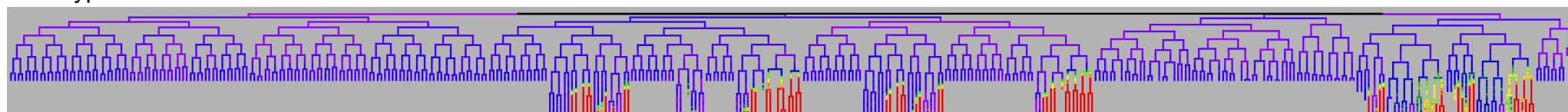


## L

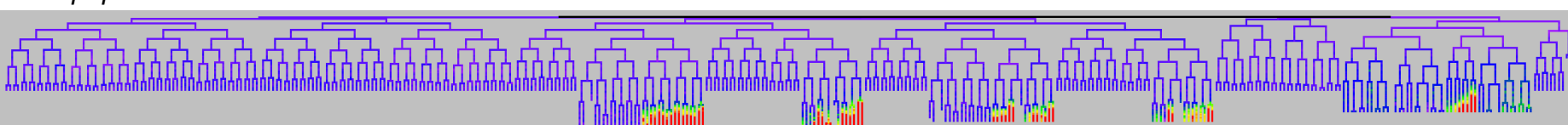
### MIR-57

Wildtype

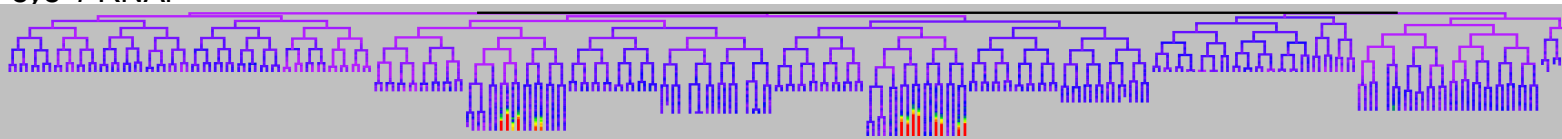
Expressed in ABp, C; Weakly activated by *pop-1/sys-1* in ABp and C



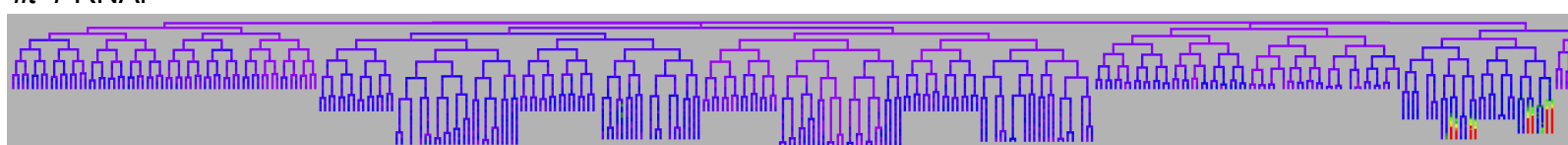
*pop-1* RNAi



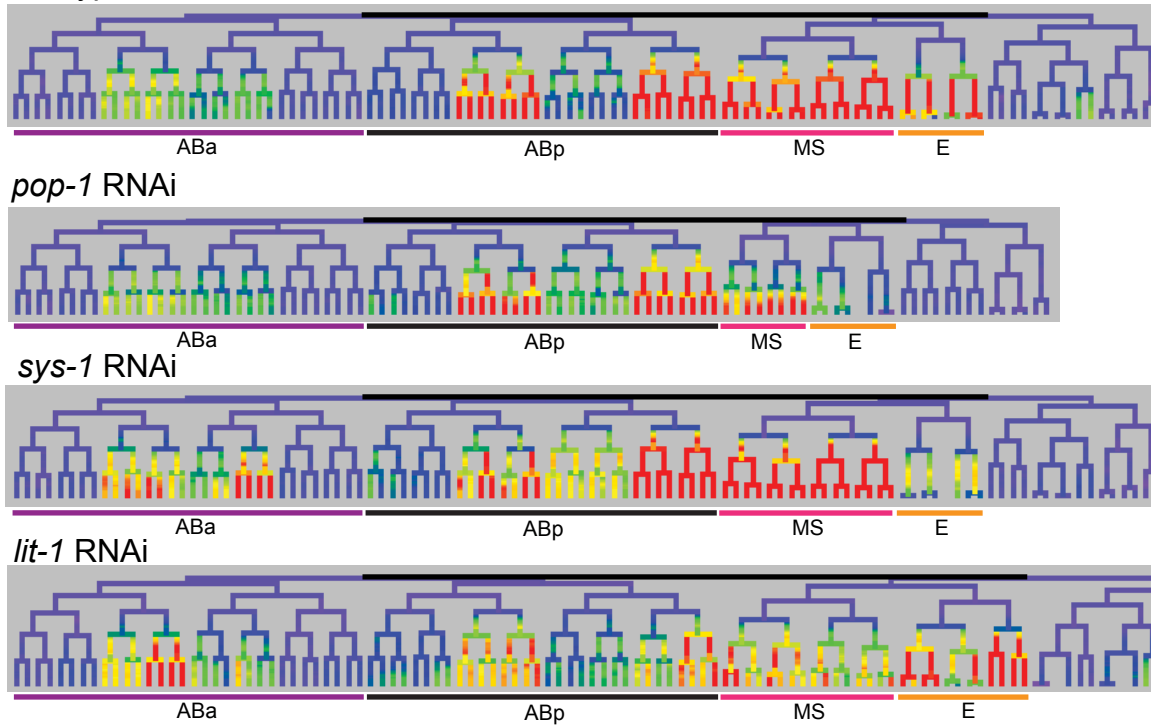
*sys-1* RNAi



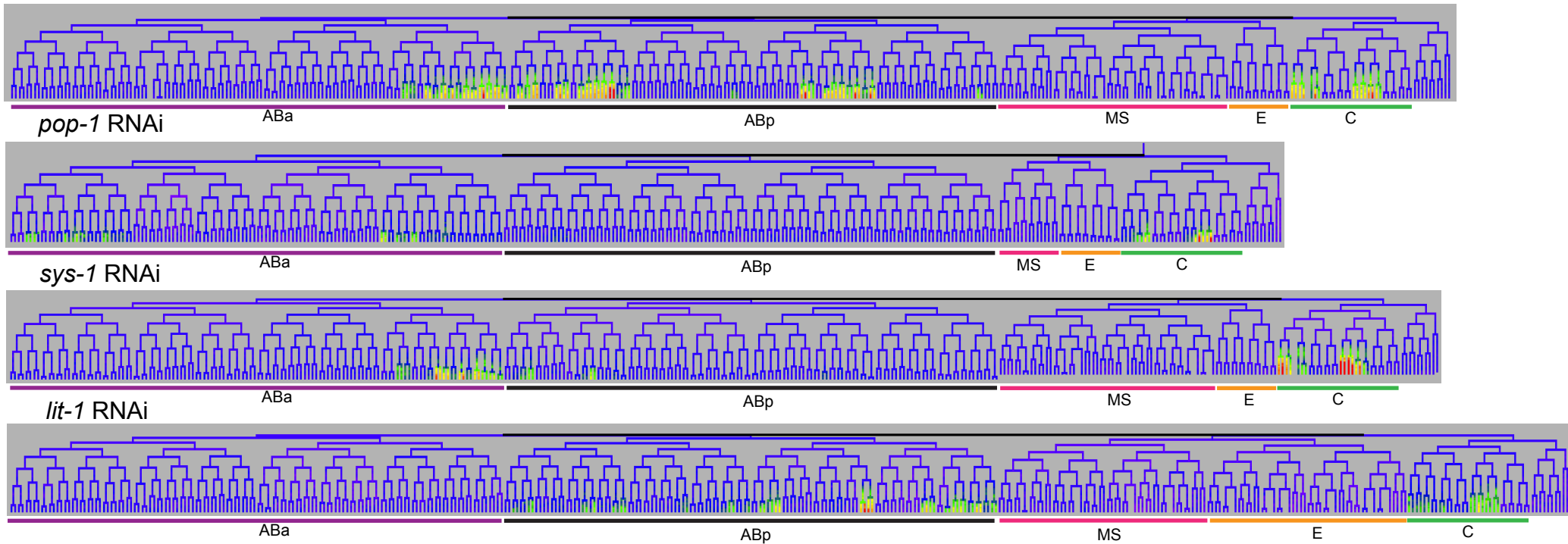
*lit-1* RNAi



**Figure S11 M** **MOM-2** Unregulated by *pop-1*  
Wildtype



**N** **NHR-25** Expressed in ABa, ABp, C; Weakly activated by *pop-1/sys-1* in ABa, moderately activated in ABp, unregulated in C  
Wildtype

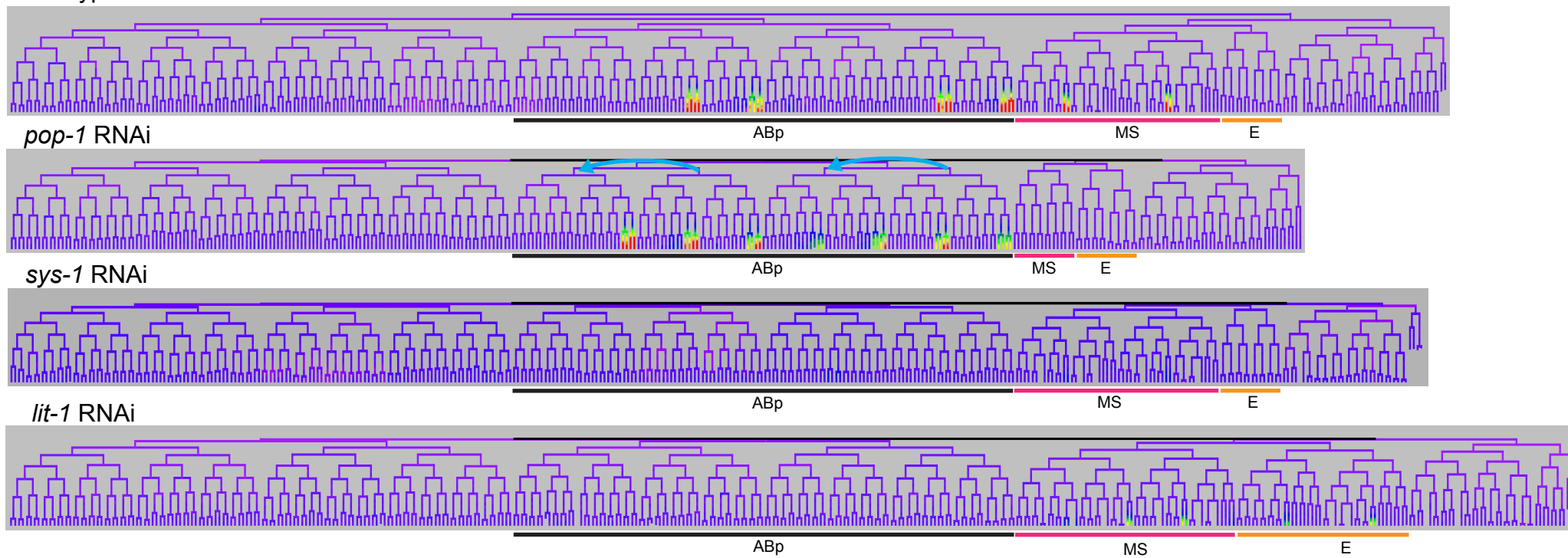


# Figure S11 O

## NHR-67

Wildtype

Expressed in ABp, MS; Weakly activated by *pop-1/sys-1* in ABp, moderately activated in MS

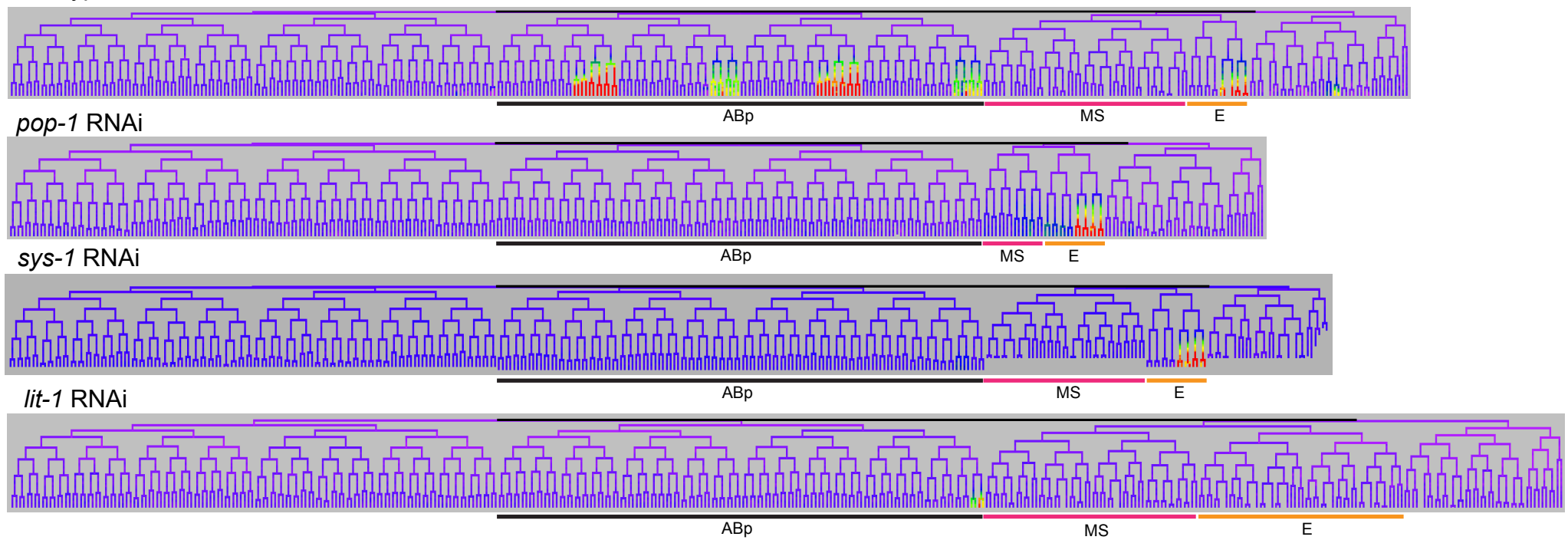


## P

## NOB-1

Wildtype

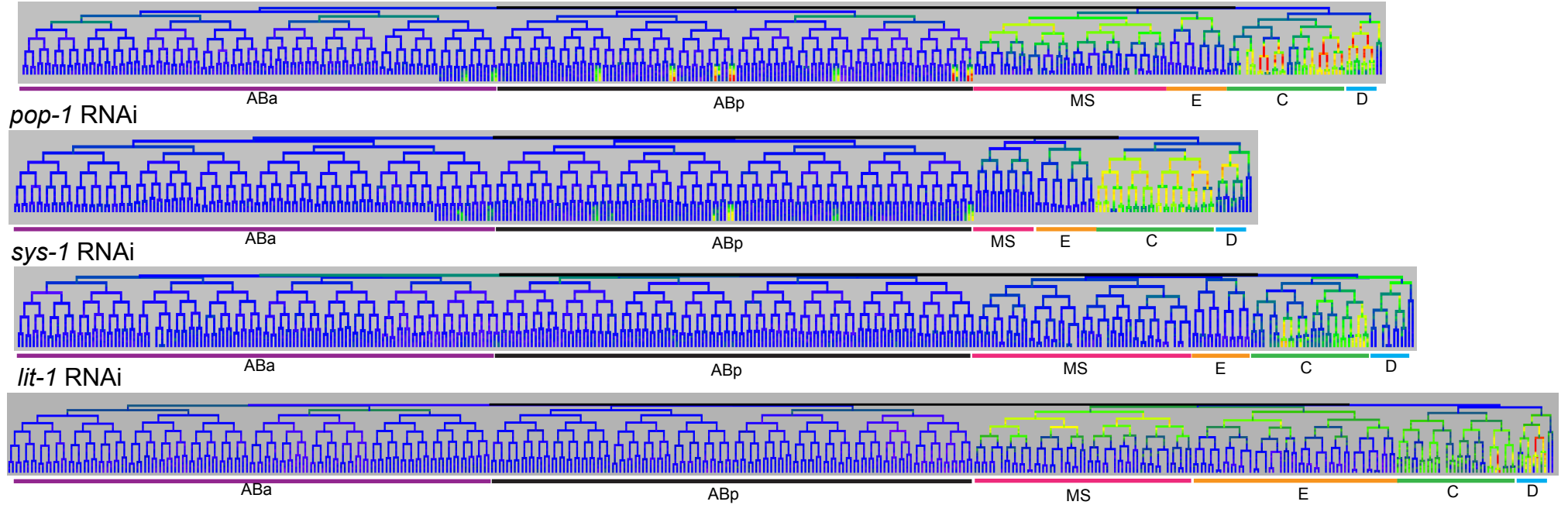
Expressed in ABp, E, C; Strongly activated by *pop-1/sys-1* in ABp, C, unregulated in E



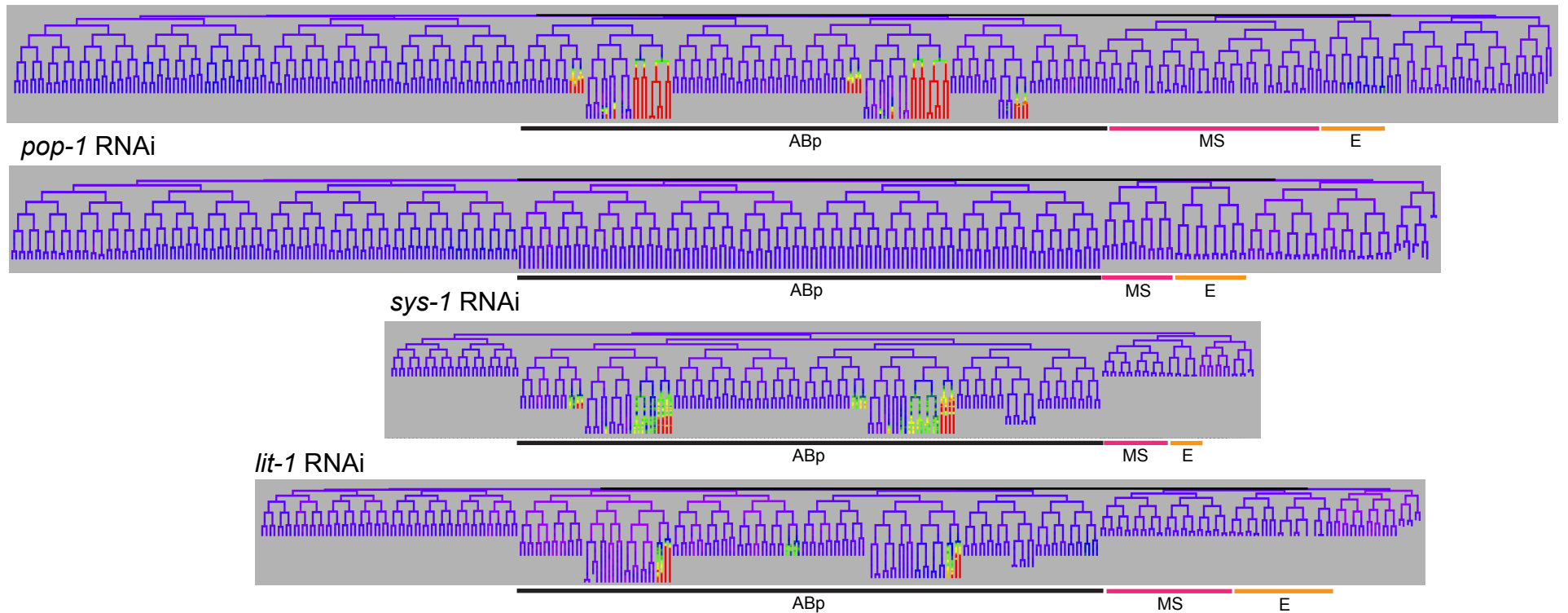


# Figure S11Q

**PAL-1** Expressed in ABa, ABp, C, D; Moderately activated by *pop-1/sys-1* in ABa, ABp, weakly activated in D, dual regulated by *pop-1* in C  
Wildtype

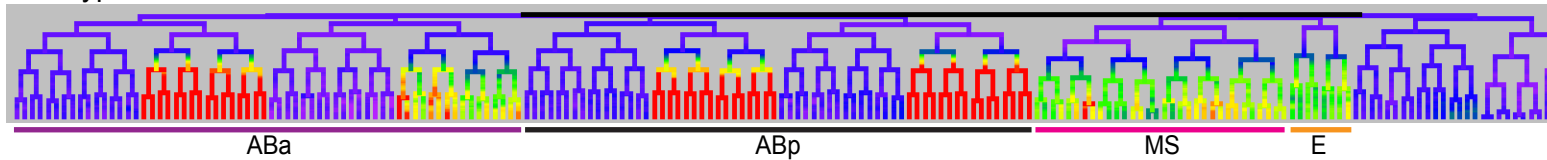


**R PAX-3** Expressed in ABp; Moderately activated by *pop-1/sys-1* in ABp  
Wildtype

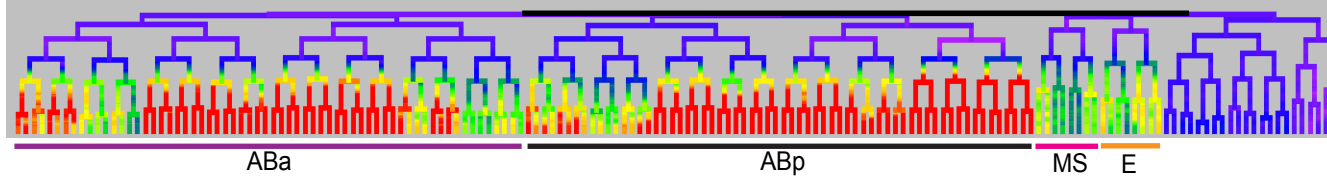


# Figure S11S

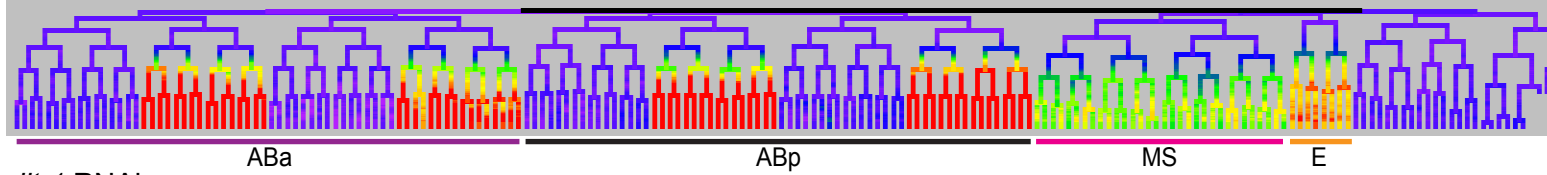
**SEM-2** Expressed in ABa, ABp, MS, E; Strongly repressed by *pop-1* in ABa, ABp, unregulated in MS, E  
Wildtype



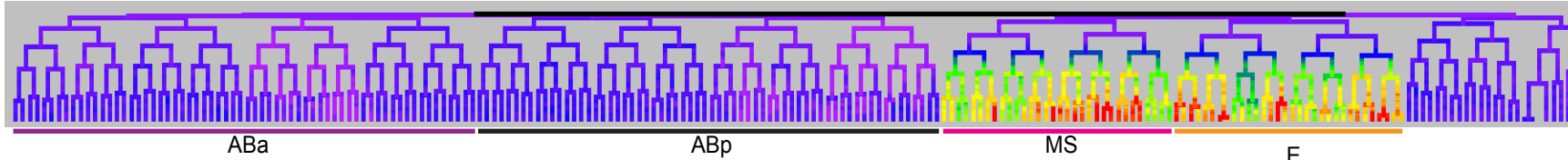
*pop-1* RNAi



*sys-1* RNAi

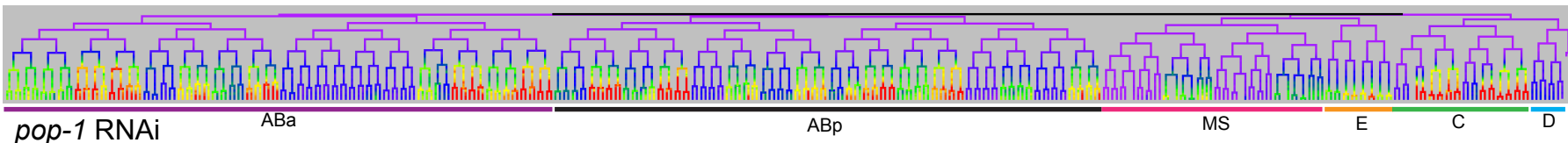


*lit-1* RNAi

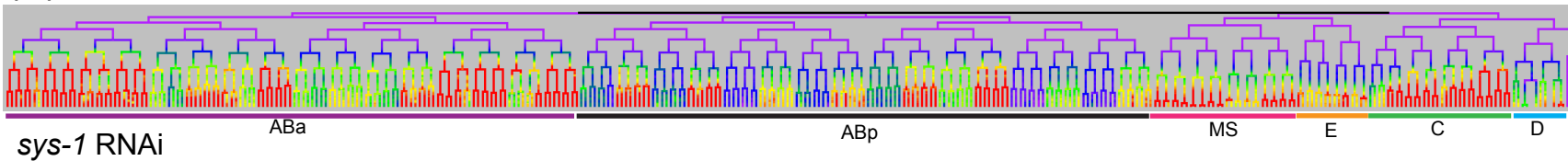


## T

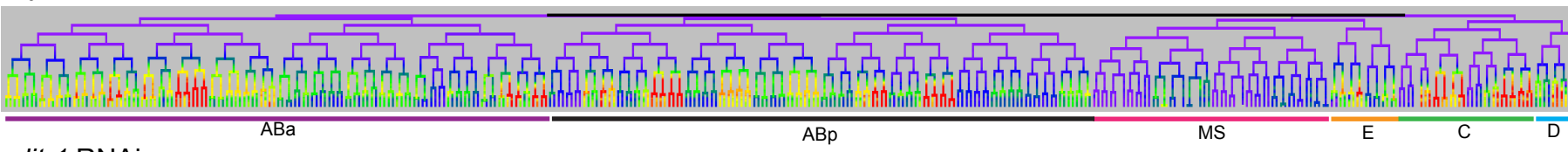
**TBX-11** Expressed in ABa, ABp, MS, E, C; Moderately repressed by *pop-1* in ABa, MS, E, C, D, unregulated in ABp  
Wildtype



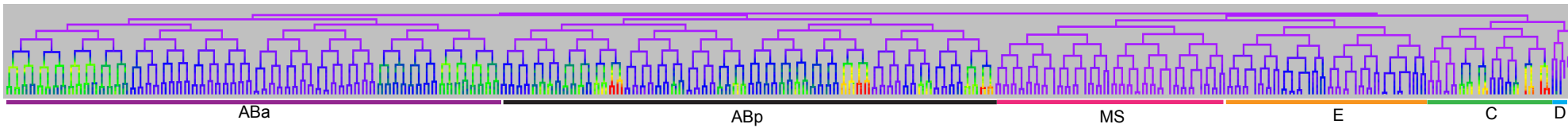
*pop-1* RNAi



*sys-1* RNAi



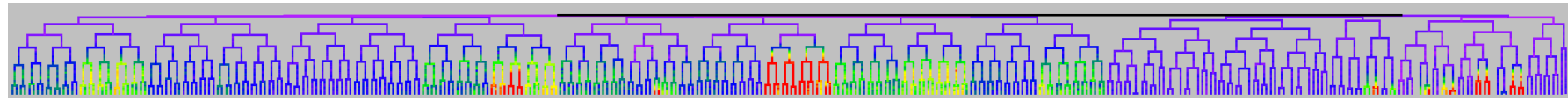
*lit-1* RNAi



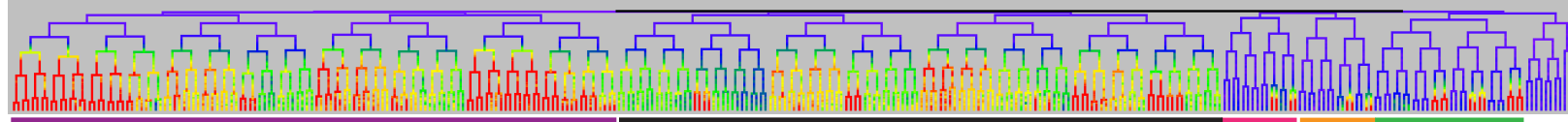
# Figure S11U

**TLP-1** Expressed in ABa, ABp, E, C; Strongly repressed by *pop-1* in ABa, ABp, unregulated in E, C

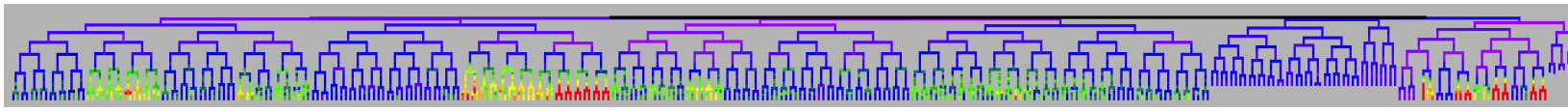
Wildtype



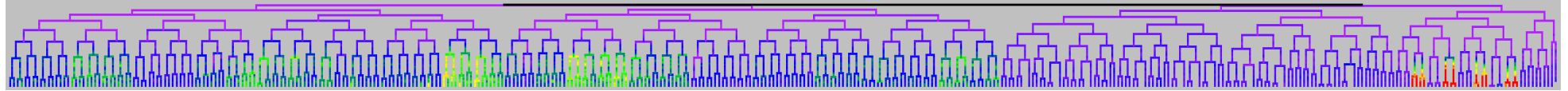
*pop-1* RNAi



*sys-1* RNAi

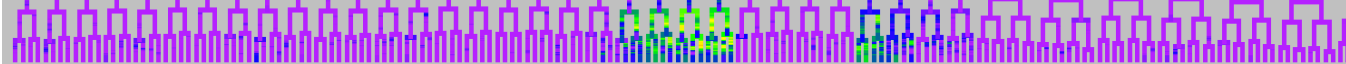
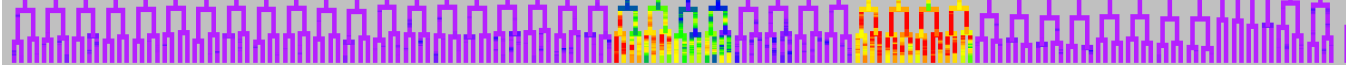
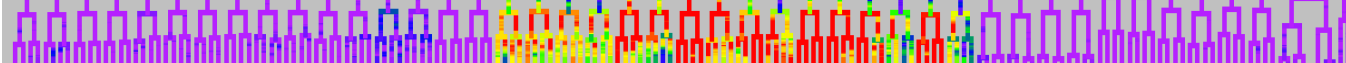
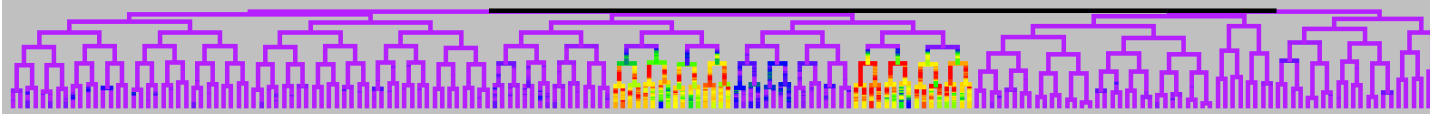


*lit-1* RNAi



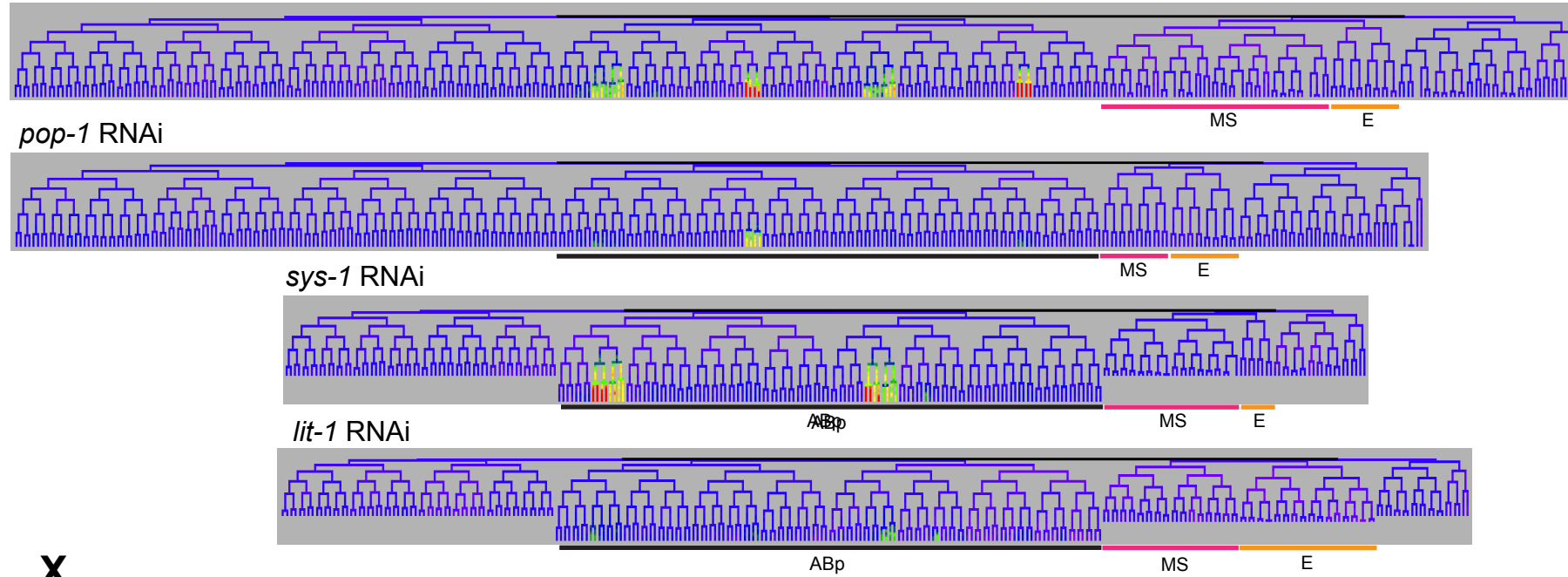
**V** **UNC-30** Expressed in ABp; Strongly repressed by *pop-1* in ABp

Wildtype



# Figure S11W

**UNC-130** Expressed in ABp; Weakly activated by *pop-1/sys-1* in ABp  
Wildtype



**X**

**VAB-7** Expressed in C; Moderately activated by *pop-1/sys-1* in C

