

Additional file 2:

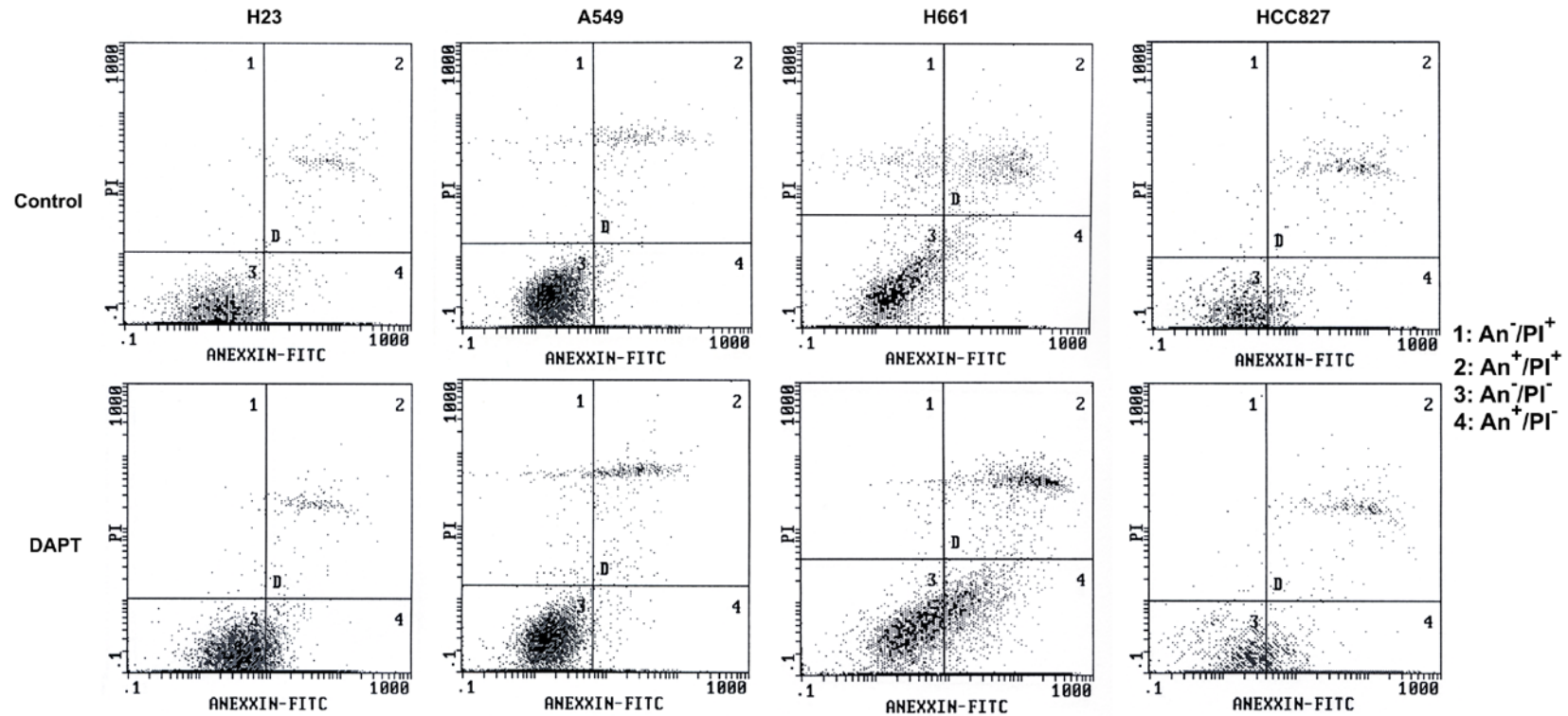


Figure 1: Representative plots for apoptosis and necrosis detection in H23, A549, H661 and HCC827 cells as described in “Materials and Methods” section. Control: untreated cells and DAPT: cells treated with DAPT. Four populations are distinguished: the viable (An^-/PI^-) [region 3], the early apoptotic (An^+/PI^-) [region 4], the late apoptotic (An^+/PI^+) [region 2] and the necrotic (An^-/PI^+) [region 1] cells.