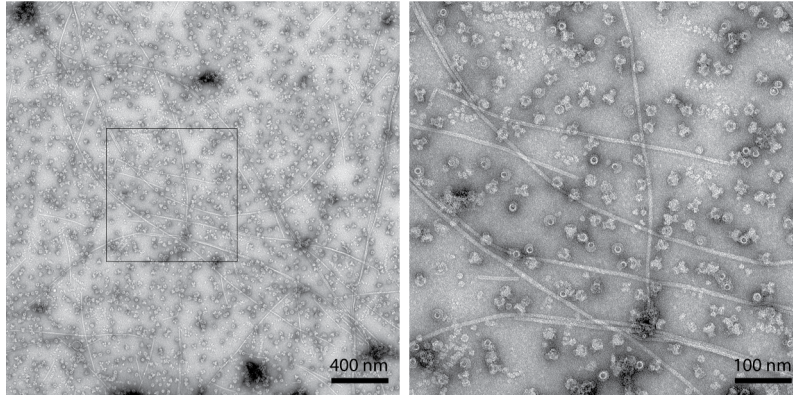


1 **Figure S2 to Monjarás Feria J.V. et al. “Role of autocleavage in the function of a**  
2 **type III secretion specificity switch protein in *Salmonella* Typhimurium”**

3

SpaS<sub>N258A</sub>,  $\Delta invJ$



4

5 **Figure S2: Loss of needle length control in *invJ* deletion mutant is independent**  
6 **of autocleavage of SpaS.** Purified needle complexes of a SpaS<sub>N258A</sub><sup>FLAG</sup>,  $\Delta invJ$  *S.*  
7 *Typhimurium* strain were negatively stained on copper grids and visualized by  
8 electron microscopy. Right image shows magnification of left image at the indicated  
9 position.