

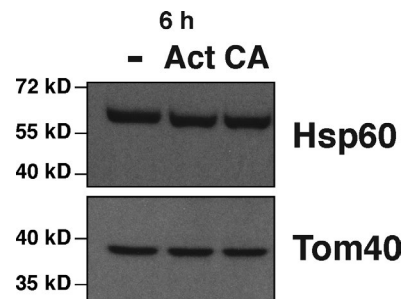
Richter et al., <http://www.jcb.org/cgi/content/full/jcb.201504062/DC1>

Figure S1. Immunoblot of MEFs treated with different antibiotic inhibitors of mitochondrial protein synthesis for 6 h and blotted with an antibody against the matrix-localized mitochondrial unfolded protein response factor Hsp60. Tom 40 is a component of the mitochondrial translocon machinery located in the outer membrane. Act, actinonin; CA, chloramphenicol.

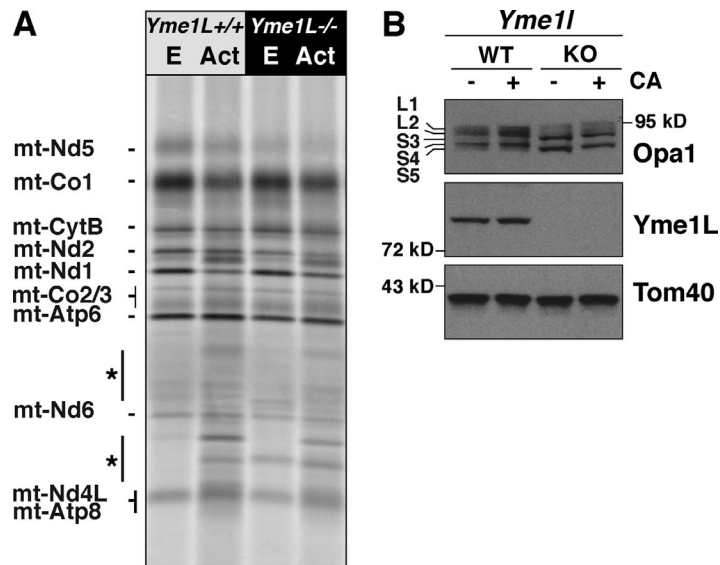


Figure S2. Metabolic labeling and Opa1 processing in wild-type or *Yme1* KO MEFs. (A) Wild-type or *Yme1* KO MEFs treated with actinonin or without (ethanol [E]) during a 3-h extended pulse labeling of mitochondrial proteins with [<sup>35</sup>S]methionine/cysteine in the presence of anisomycin. The asterisks indicate aberrant translation products. (B) Immunoblotting of whole cell lysates from wild-type or *Yme1* KO MEFs treated with or without chloramphenicol (CA) for 24 h with the indicated antibodies.