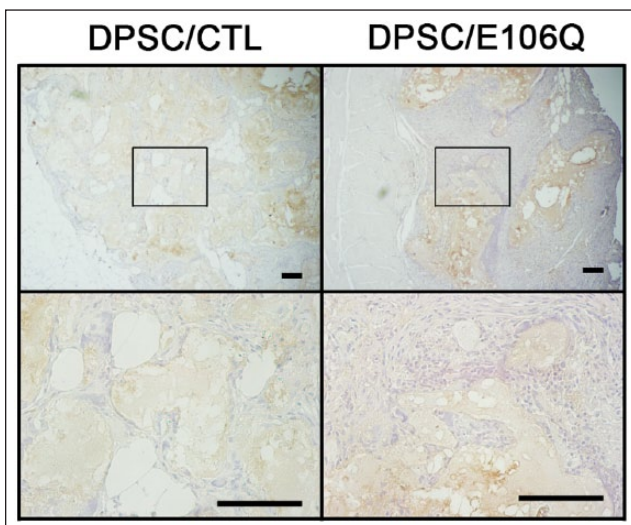


# The Role of ORAI1 in the Odontogenic Differentiation of Human Dental Pulp Stem Cells

Journal of Dental Research  
DSI  
© International & American Associations  
for Dental Research 2015  
Reprints and permissions:  
sagepub.com/journalsPermissions.nav  
DOI: 10.1177/0022034515608128  
jdr.sagepub.com

S. Sohn<sup>1,2</sup>, Y. Park<sup>1,2</sup>, S. Srikanth<sup>3</sup>, A. Arai<sup>1,2</sup>, M. Song<sup>1,2</sup>, B. Yu<sup>1</sup>, K.-H. Shin<sup>1,2,4</sup>,  
M.K. Kang<sup>1,2,4</sup>, C. Wang<sup>1,4</sup>, Y. Gwack<sup>3</sup>, N.-H. Park<sup>1,2,4,5</sup>, and R.H. Kim<sup>1,2,4</sup>

## Appendix



**Appendix Figure.** The formalin-fixed paraffin-embedded sections of nodules harvested from mice transplanted with DPSC/CTL and DPSC/E106Q cells were subjected to immunohistochemistry using IgG antibody. The bar represents 100  $\mu$ m.

<sup>1</sup>UCLA School of Dentistry, Los Angeles, CA, USA

<sup>2</sup>Laboratory of Viral Oncology and Aging Research, UCLA School of Dentistry, Los Angeles, CA, USA

<sup>3</sup>Department of Physiology, David Geffen School of Medicine at UCLA, Los Angeles, CA, USA

<sup>4</sup>UCLA Jonsson Comprehensive Cancer Center, Los Angeles, CA, USA

<sup>5</sup>David Geffen School of Medicine at UCLA, Los Angeles, CA, USA

### Corresponding Author:

R.H. Kim, UCLA School of Dentistry, Center for the Health Sciences, 10833 Le Conte Avenue, Room 43-091, Los Angeles, CA 90095, USA.  
Email: rkim@dentistry.ucla.edu