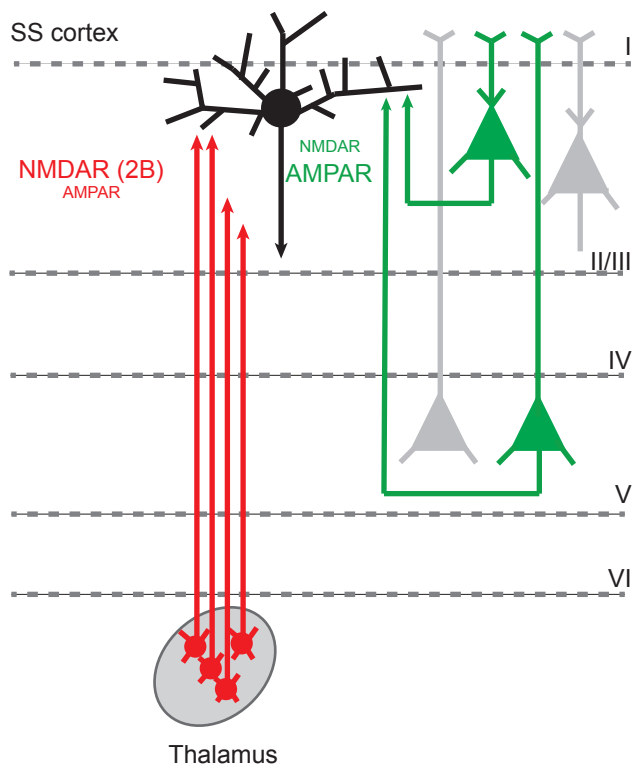
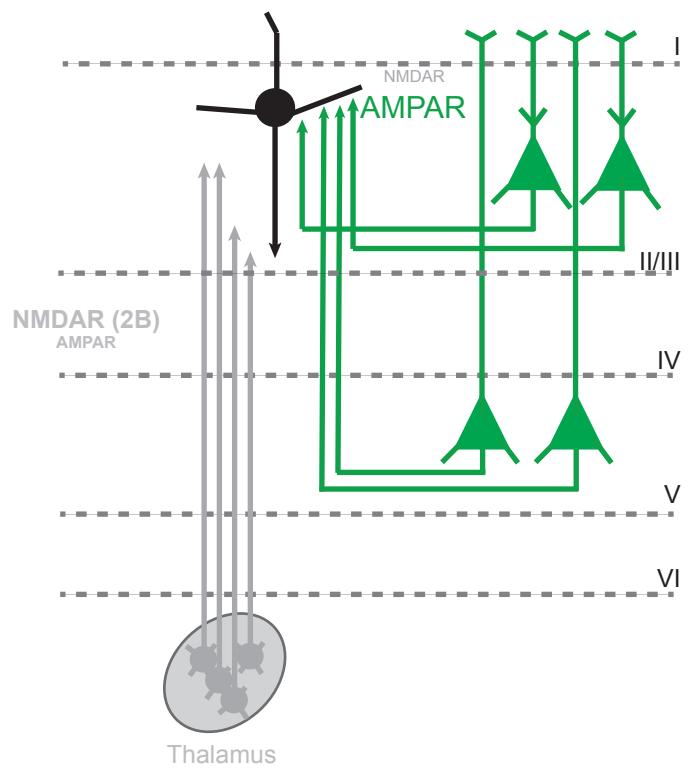


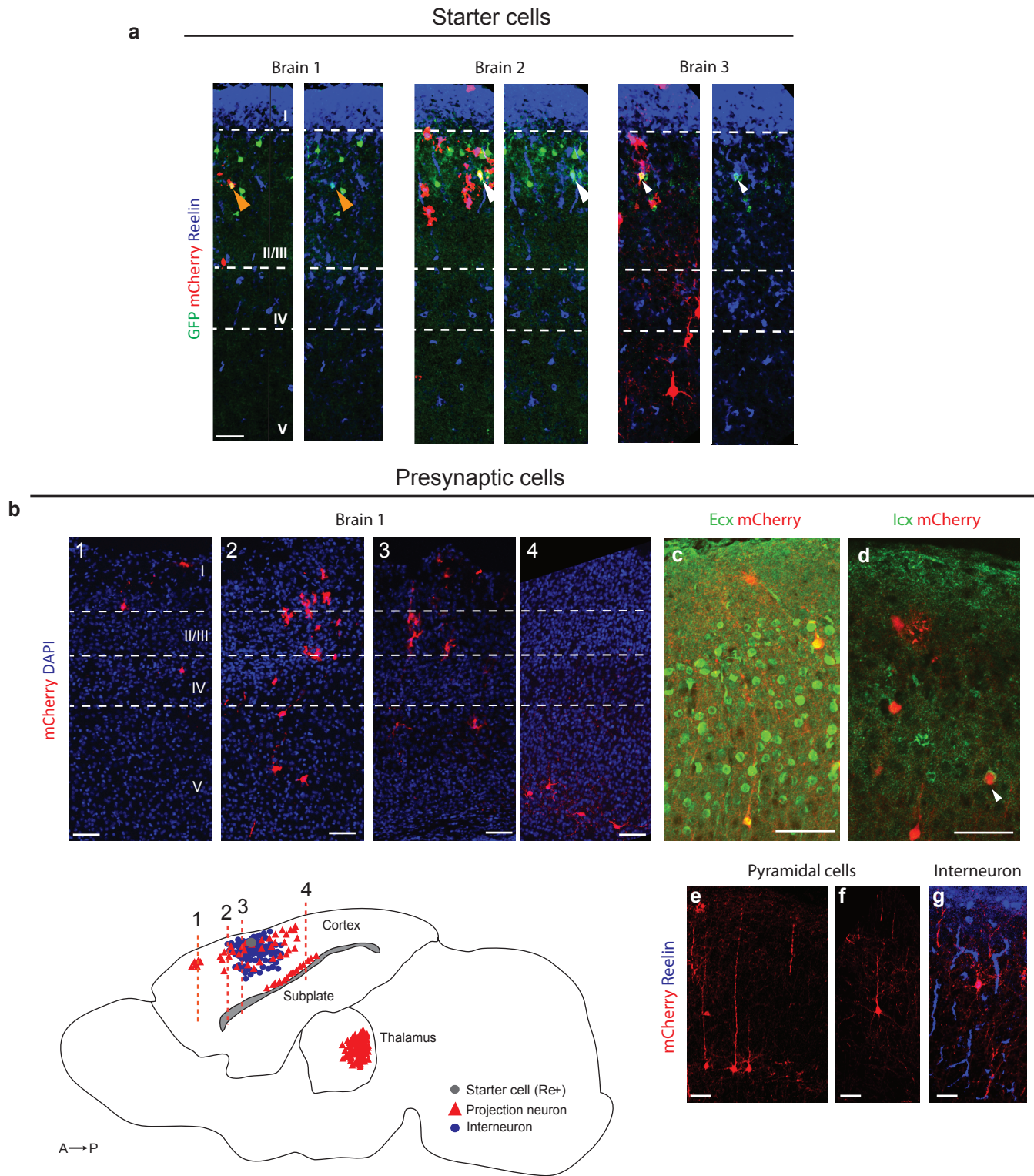
Normal interneuron connectivity



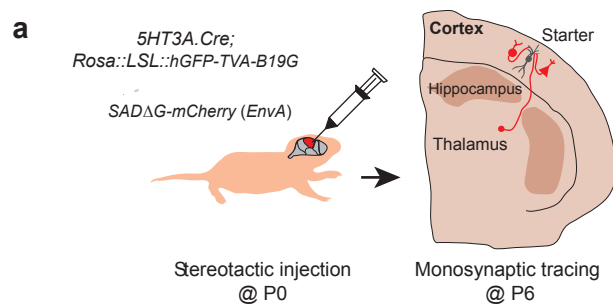
Aberrant interneuron connectivity



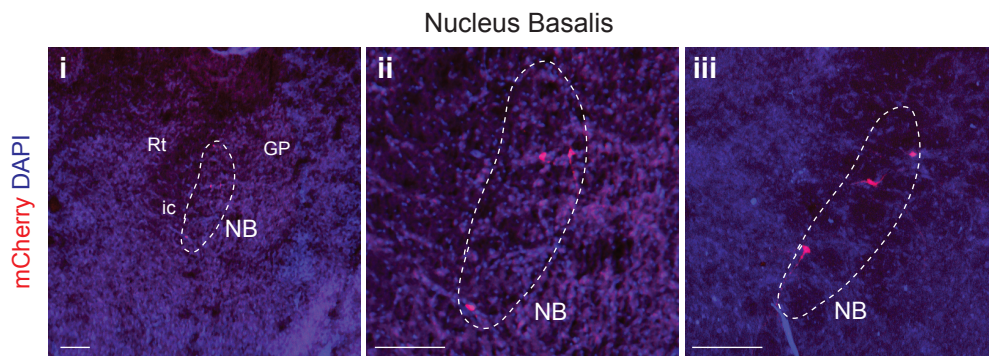
Supplementary Figure 1



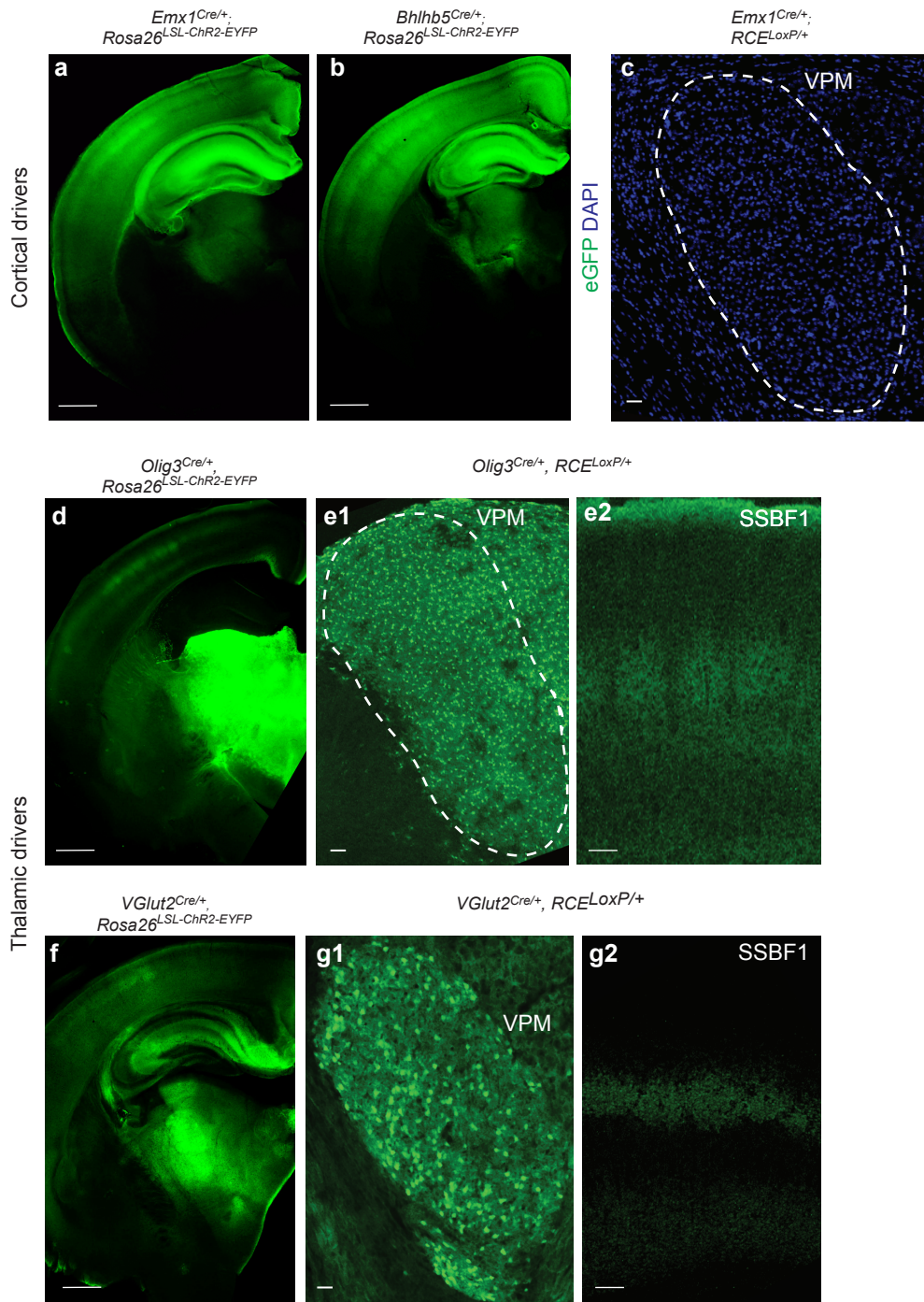
Supplementary Figure 2



b

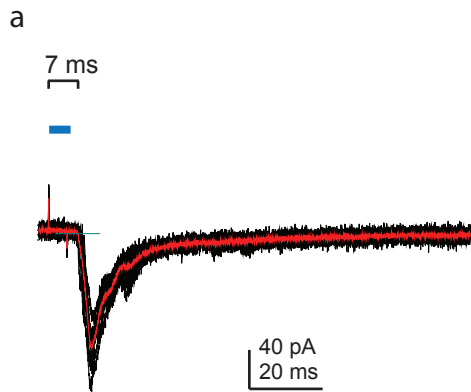


Supplementary Figure 3

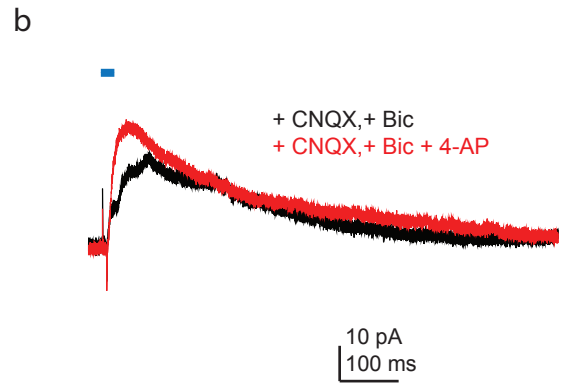


Supplementary Figure 4

Olig3^{Cre/+}
Rosa26^{LSL-ChR2-EYFP}

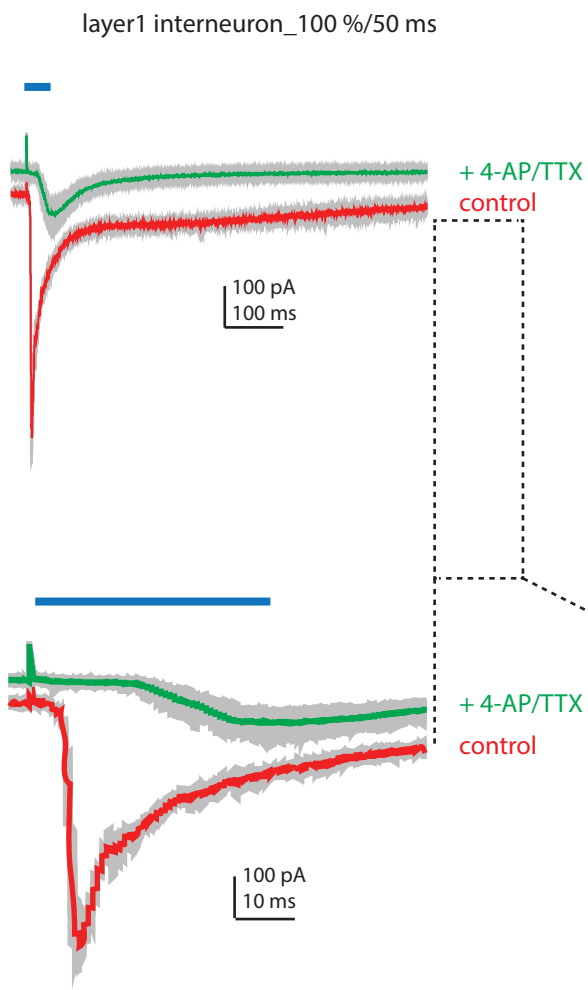


VGlut2^{Cre/+}
Rosa26^{LSL-ChR2-EYFP}



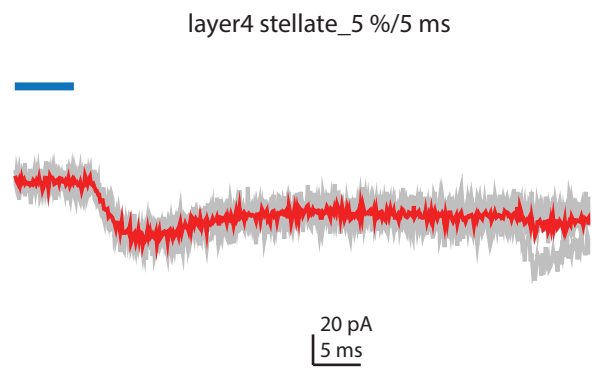
c

VGlut2^{Cre/+}
Rosa26^{LSL-ChR2-EYFP}

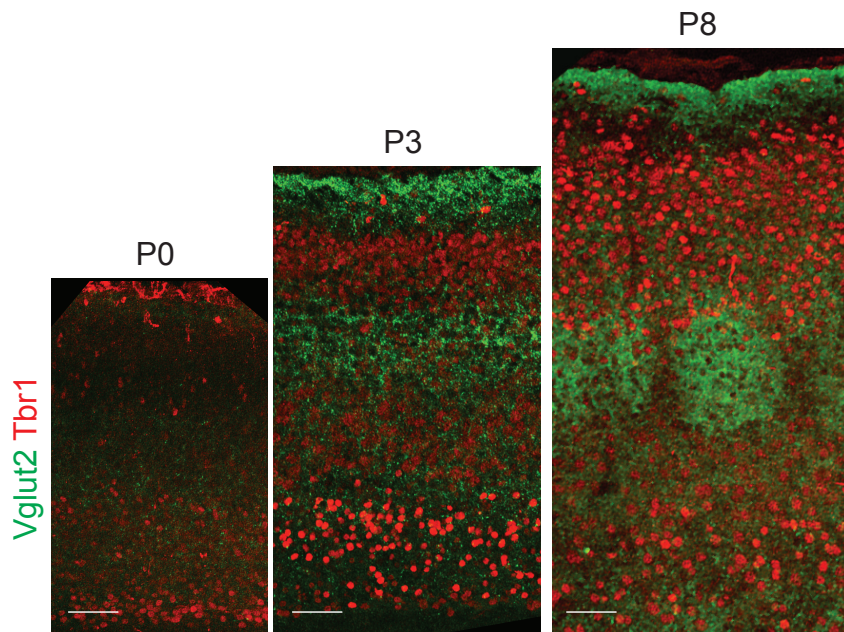


d

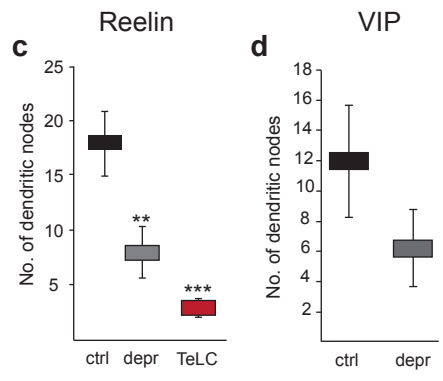
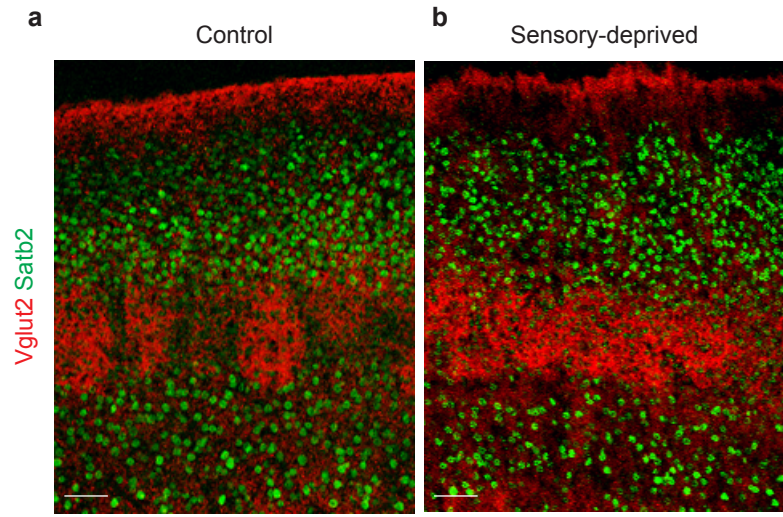
VGlut2Cre-AAVflexCh2R thalamic injection



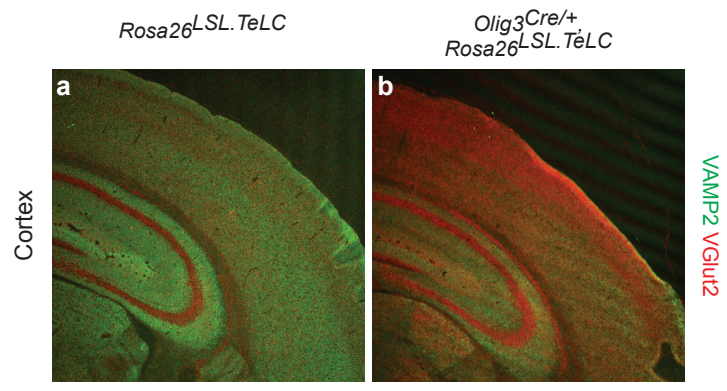
Supplementary Figure 5



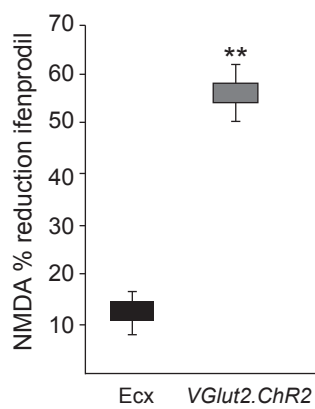
Supplementary Figure 6



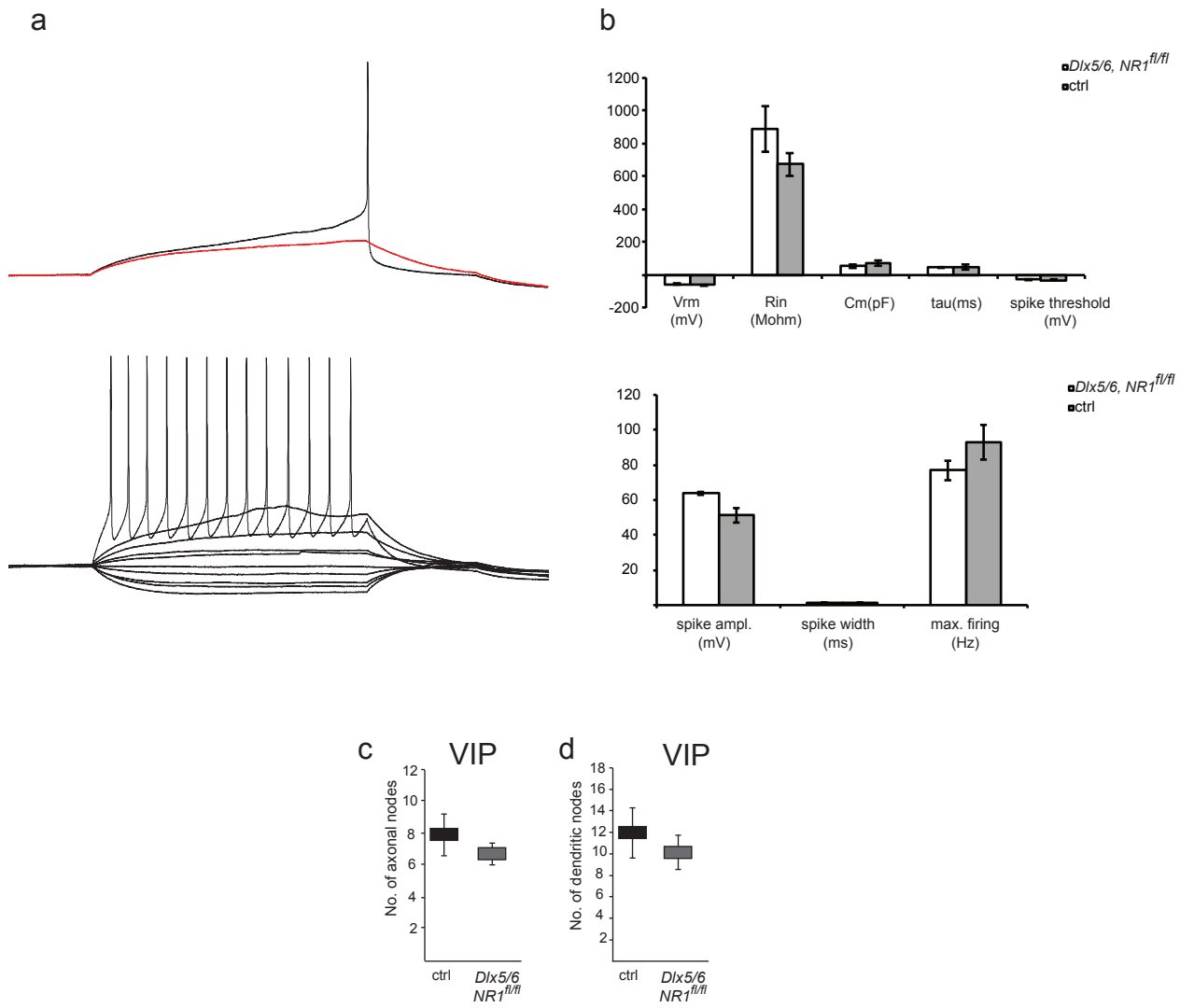
Supplementary Figure 7



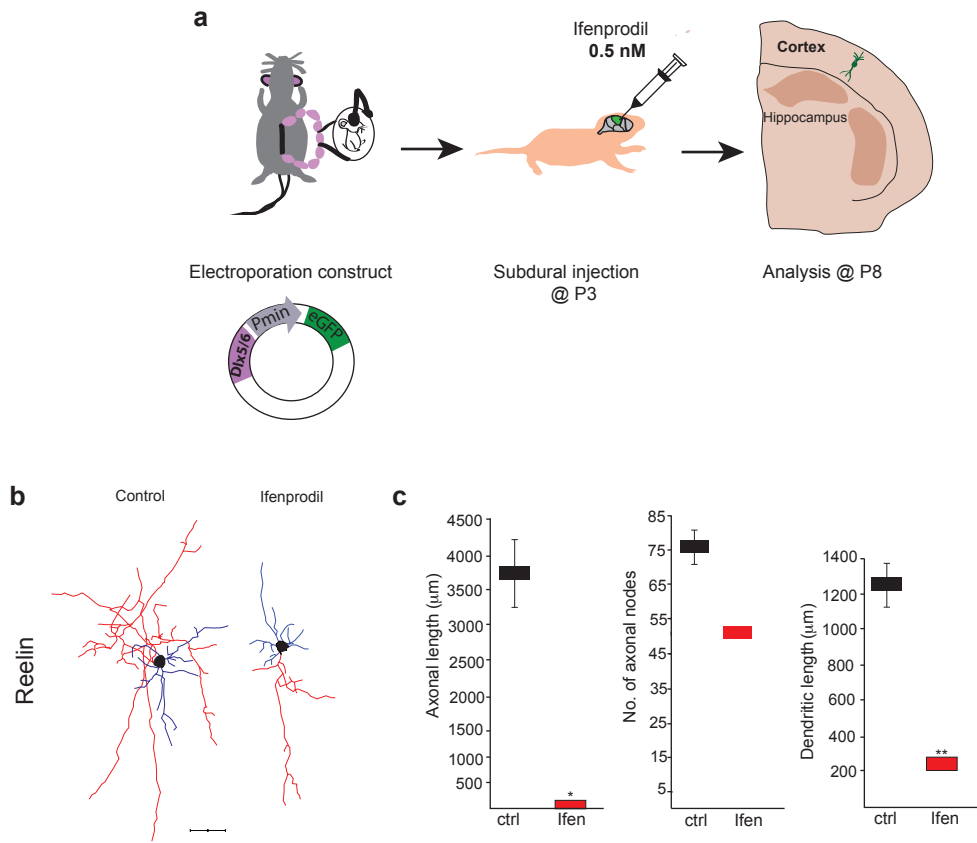
Supplementary Figure 8



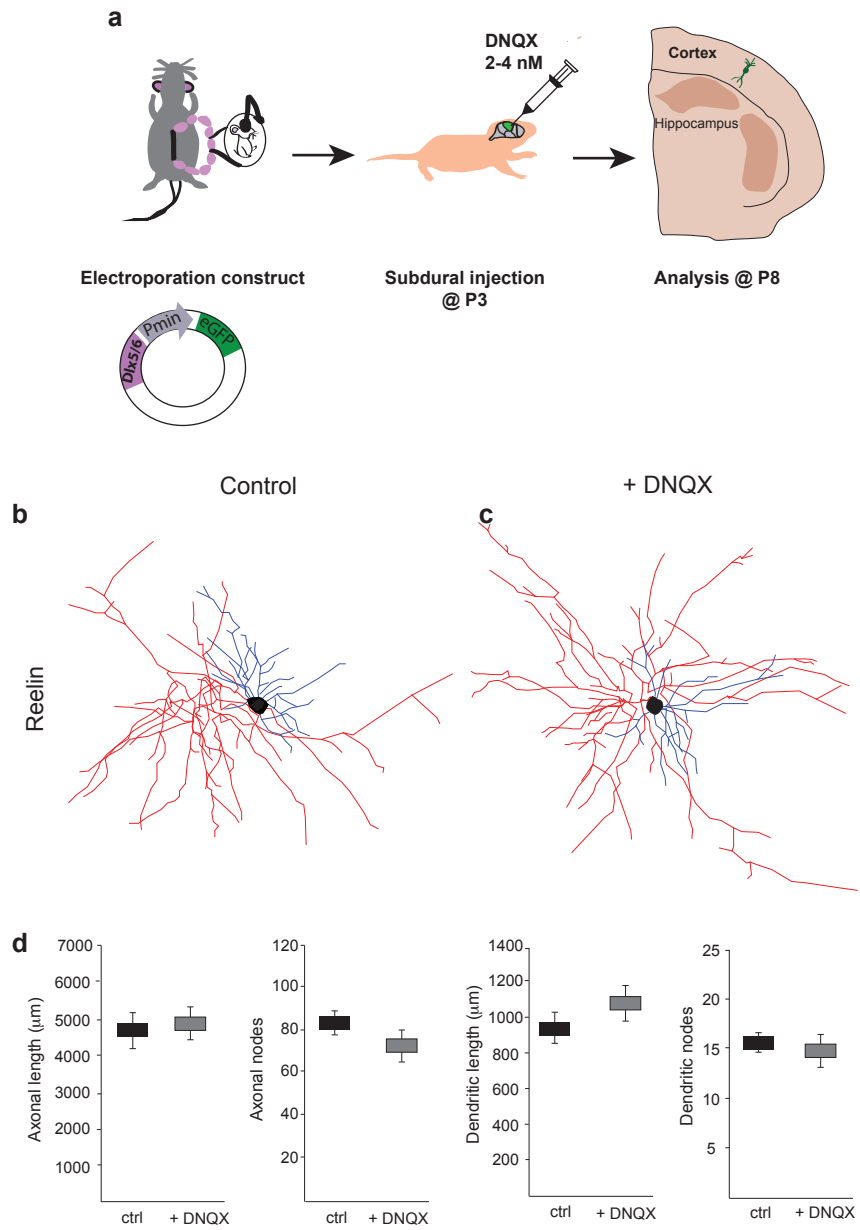
Supplementary Figure 9



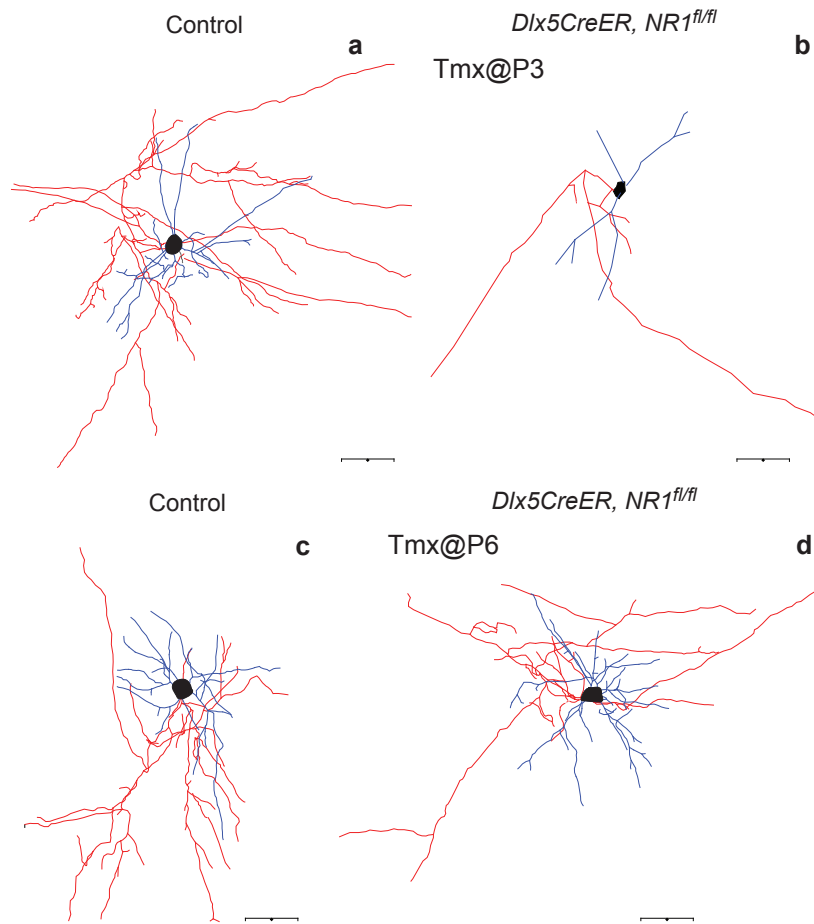
Supplementary Figure 10



Supplementary Figure 11



Supplementary Figure 12



Supplementary Figure 13