

Figure S1.

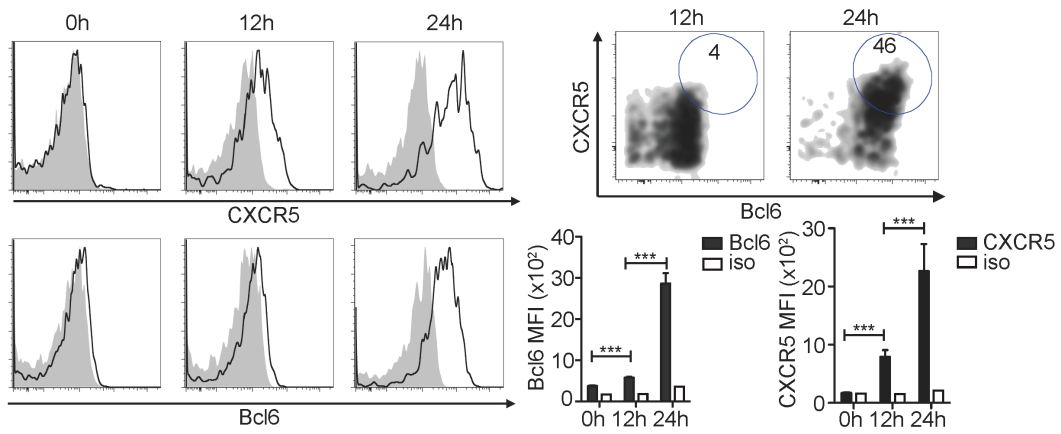


Figure S1. Levels of CXCR5, Bcl6, and PD-1 expression on previously activated OT-II T cells that were re-activated for 1 day in B6 recipients. The data are displayed as in Figs. 1A and 1B and represent 3 independent experiments (3-4 mice per group).

Figure S2.

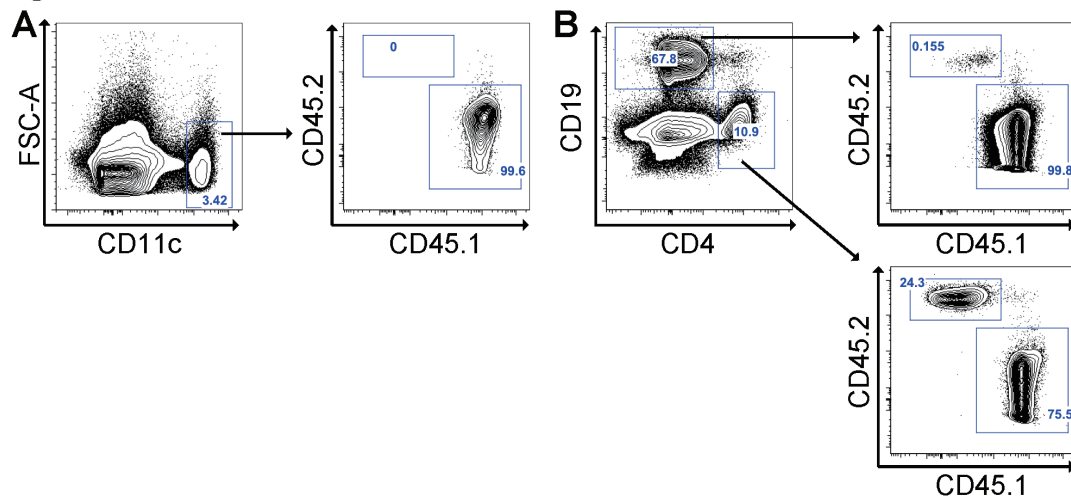


Figure S2. Replacement of DC and lymphocyte compartments by donor cells in radiation BM chimera. CD45.2 and CD45.1 contents in CD11c⁺ DC compartment (A), CD19⁺ B cell compartment and CD4⁺ T cell compartment (B) seven weeks after reconstitution of lethally irradiated CD45.2 B6 mice with CD45.1 bone marrows.