

Supplemental Materials

Phosphorylation of NR2B NMDA subunits by protein kinase C in arcuate nucleus contributes to inflammatory pain in rats

Fan Bu, Huiyu Tian, Shan Gong, Qi Zhu, Guang-Yin Xu, Jin Tao, Xinghong Jiang

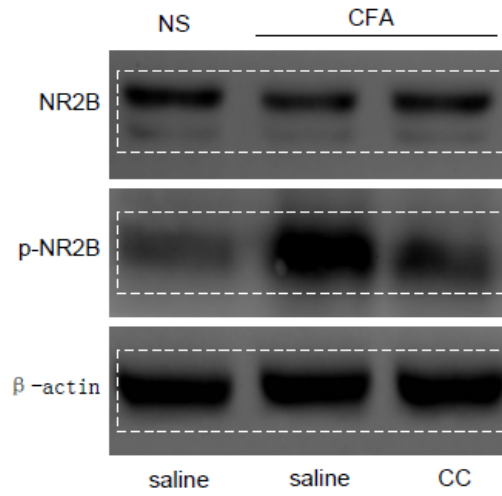


Fig. S1: Full-length blots for NR2B expression in ARC. Shown is the expanded image of western blot for NR2B against a loading control, GAPDH, presented in Fig. 4A. The Blot is representative of three experiments.

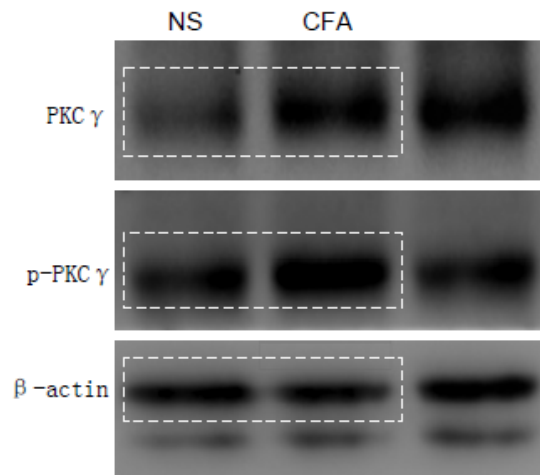


Fig. S2: Full-length blots for PKC γ expression in ARC. Shown is the expanded image of western blot for PKC γ against a loading control, GAPDH, presented in Fig. 5A. Blot is representative of three experiments.