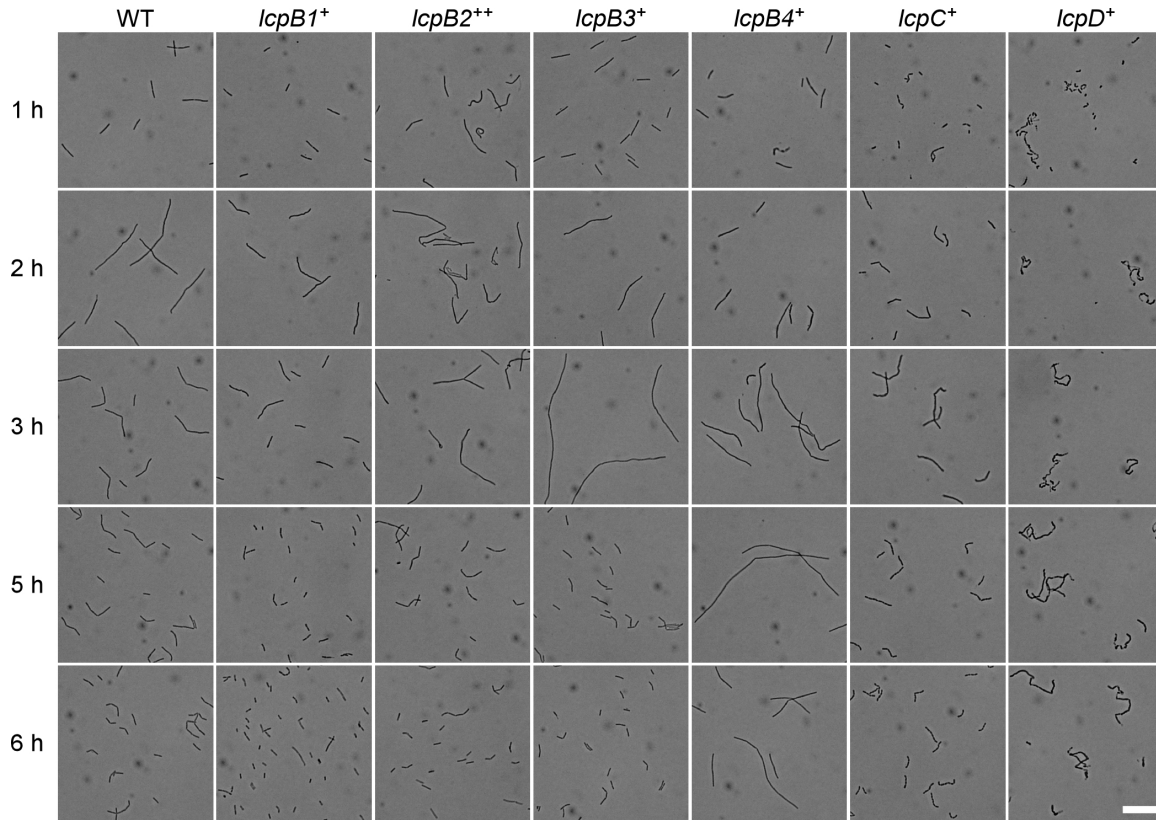


SUPPLEMENTAL MATERIAL



Fig, S1. Overnight cultures of *B. anthracis* Sterne (WT) and isogenic variants carrying a single *lcp* gene were normalized to A_{600} 5, diluted 1:100 into fresh BHI, and grown at 37°C. Aliquots were removed and fixed for microscopic observation. Representative phase contrast microscopy images are shown at the indicated time points (h, hour). Scale bar represents 20 μ m.

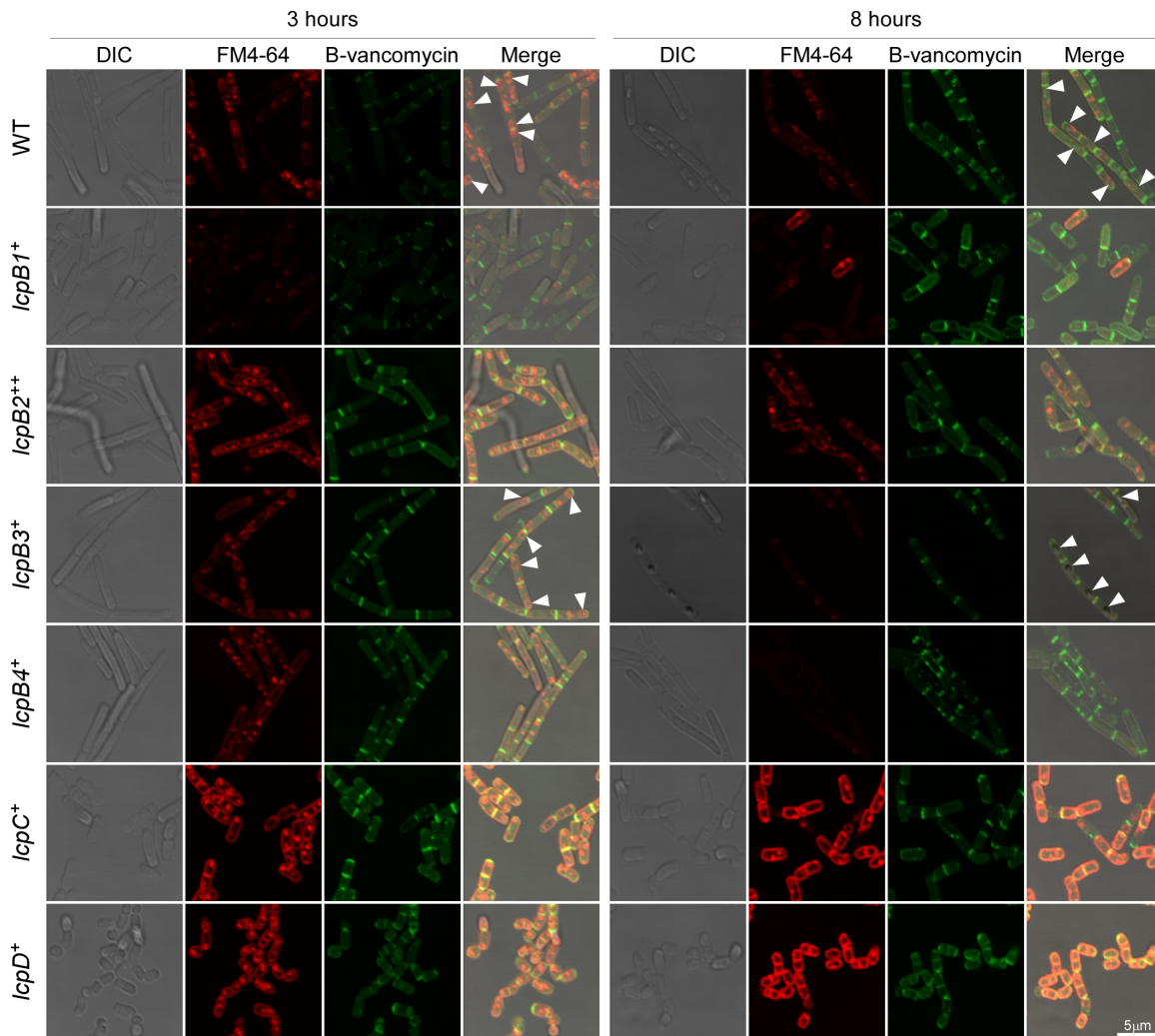


Fig. S2. *B. anthracis* spore formation in various *lcp* expressing strains. Bacilli from overnight cultures of *B. anthracis* Sterne (WT) and isogenic variants carrying a single *lcp* gene were washed, suspended to A_{600} 5 in modG sporulation medium and incubated. At 3 and 8 h incubation modG medium, culture aliquots were withdrawn, samples were fixed with formaldehyde, and differential interference contrast (DIC) microscopy or fluorescence microscopy images of FM4-64- and B-vancomycin-stained bacteria were acquired and merged. Polar septa and forespores (white arrowheads) were detected in the wild-type and in *lcpB3*⁺ variant. Scale bar represents 5 μ m.