

Supplementary Table 1 Oligomerization calculations from size exclusion chromatography data

Complex	Mass from SEC (Da)	Calculated mass of Protein/RNA dimer (Da)	Number of Protein/RNA dimers in complex
CptIN	77259	33931	2.28
ToxIN	110630	31367	3.53

Supplementary Table 2 Torsion angles of counter-clockwise twist in CptI_{Er}

Residue	Eta (degree)	Theta (degree)
Chain B A27	197.4	145.5
Chain B A28	145.3	179.5
Chain B A29	188.2	154.5

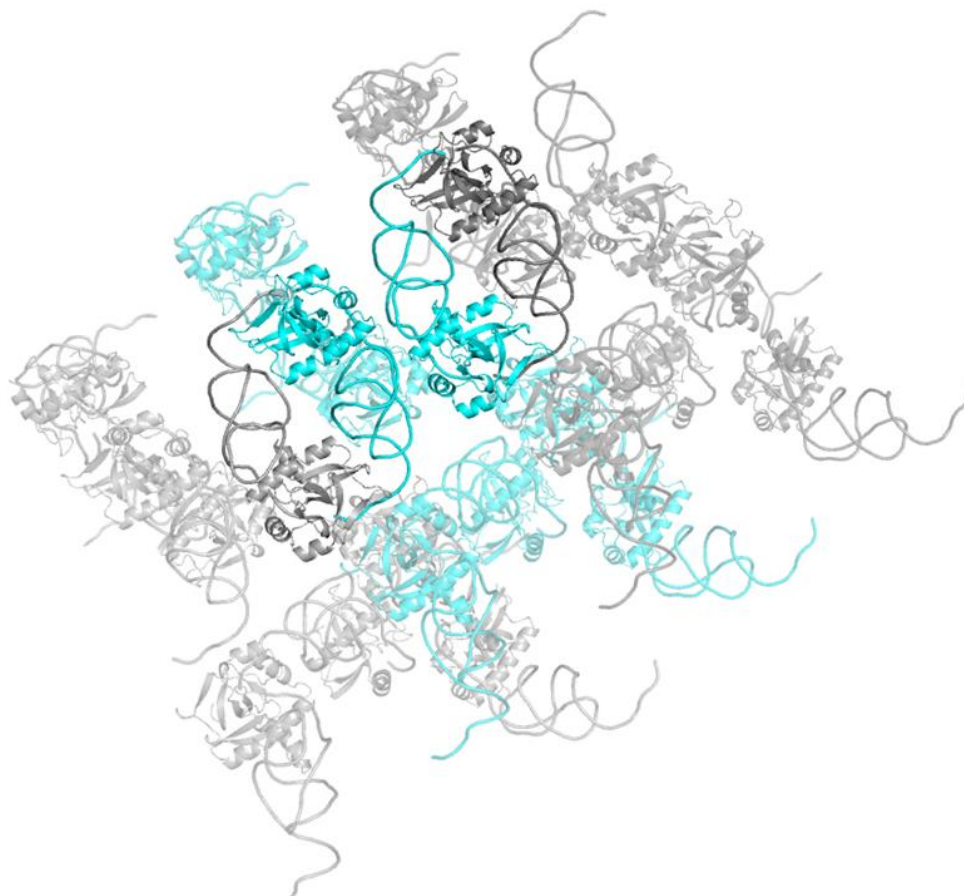
Supplementary Figure Legends

Supplementary Figure 1 - Interactions with symmetry cells show a heterotetrameric biological unit

One full asymmetric unit from the crystal structure is shown in cyan, with two symmetry units in light grey and dark grey. Two complete heterotetrameric units are shown opaque above the rest of the chains.

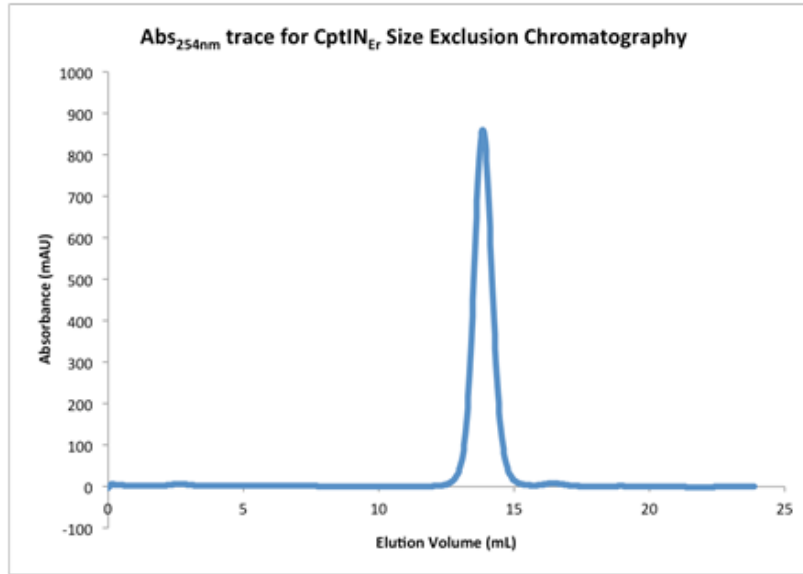
Supplementary Figure 2 - Analytical size exclusion chromatography of CptIN_{Er}

(A) The trace is shown for the elution of the CptIN_{Er} complex through a Superdex S200 13/30 (GE Healthcare) column. CptIN_{Er} elutes as a single peak. (B) Molecular weight standards were run to calculate a standard curve, for which the R² value is shown. Values for the molecular weight of ToxIN_{Pa} (known to be a heterohexamer) and CptIN_{Er} were calculated from the points marked on the curve, and results displayed in Supplementary Table 1.

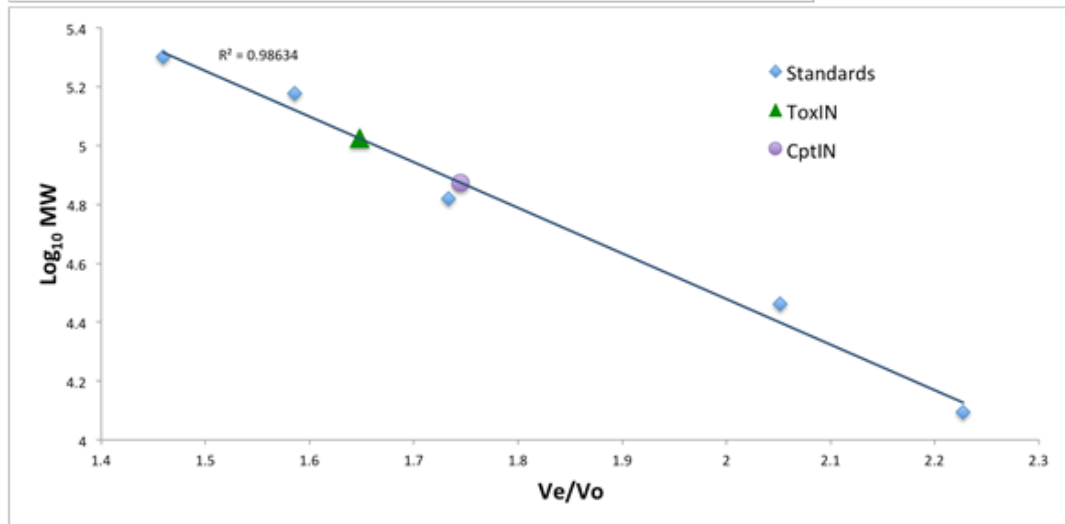


Supplementary Figure 1

A



B



Supplementary Figure 2