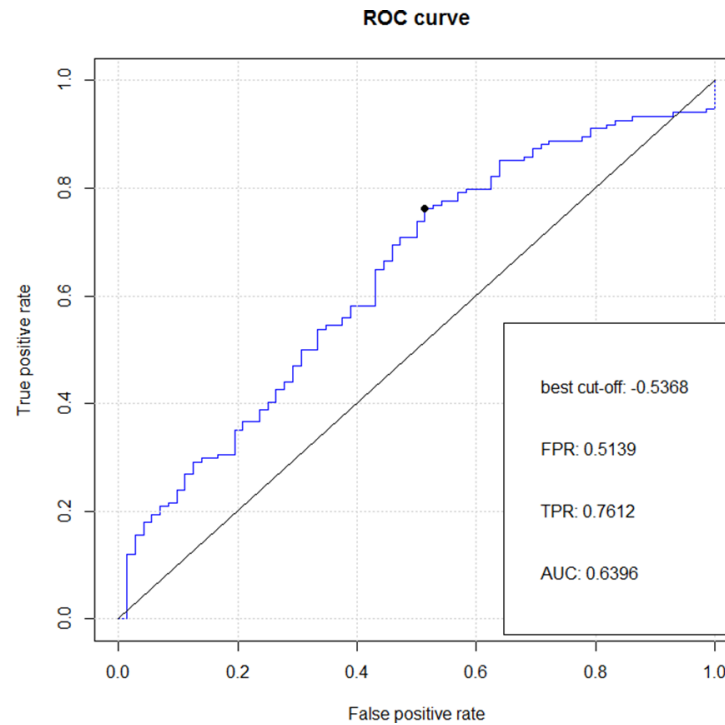
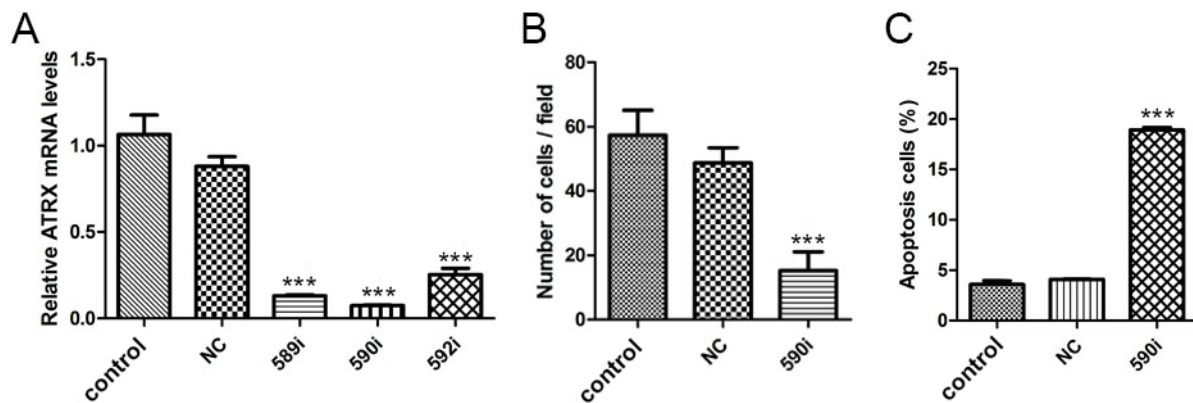


SUPPLEMENTARY FIGURES AND TABLES



Supplementary Figure 1: The *ATRX* expression threshold was determined by receiver operating characteristics (ROC) analysis with an area under the curve of 0.6396.



Supplementary Figure 2: The knockdown of *ATRX* affected migration and apoptosis of LN229 cells. Real-time PCR analysis of the *ATRX* mRNA level in the LN229 cells that were untreated or transfected with 590i or negative control **A**. The number of migrated cells in LN229 cells transfected with 590i was greatly reduced contrasted with control and NC **B**. A statistical analysis of the flow cytometry assays of the annexin V and PI levels in the LN229 cells that were untreated or transfected with 590i or negative control **C**. Data are presented as the means \pm S.D. from three independent experiments. * $p < 0.05$, ** $p < 0.01$ and *** $p < 0.001$.

Supplementary Table 1: Clinicopathological characteristics of 208 patients with astrocytic tumors

<i>Characteristic</i>	<i>ATRX-low</i>	<i>ATRX-high</i>	<i>p-value</i>
<i>Age at diagnosis</i>			
< 45	53	61	< 0.0001
≥ 45	16	78	
<i>Gender</i>			
Male	38	91	0.1726
Female	31	48	
<i>Preoperative KPS score</i>			
≥ 80	39	73	0.05
< 80	16	61	
NA	14	5	
<i>Histology & Grade</i>			
Astrocytoma (A, II)	41	24	< 0.0001
Anaplastic astrocytoma (AA, III)	4	11	
Primary glioblastoma (pGBM,IV)	19	99	
Secondary glioblastoma (sGBM,IV)	5	5	
<i>TCGA Subtypes</i>			
Proneural	31	19	< 0.0001
Neural	12	30	
Classical	7	11	
Mesenchymal	19	79	
<i>Resection</i>			
Total	28	60	1
Subtotal	36	77	
NA	5	2	
<i>Radiotherapy</i>			
Yes	49	106	0.4488
No	15	24	
NA	5	9	
<i>TMZ Chemotherapy</i>			
Yes	26	73	0.0834
No	34	53	
NA	9	13	
<i>IDH1/2 mutation</i>			
Mutation	51	24	< 0.0001
Wildtype	16	114	
NA	2	1	

Abbreviations: KPS, Karnofsky performance status, NA, not available.

Supplementary Table 2: Factors associated with OS in the Cox regression analysis for patients

<i>Variables</i>	<i>Univariate Cox Regression</i>			<i>Multivariate Cox Regression</i>		
	<i>HR</i>	<i>95%CI</i>	<i>p value</i>	<i>HR</i>	<i>95%CI</i>	<i>p value</i>
<i>ATRX</i>	2.332	1.564–3.479	< 0.0001	1.802	1.144–2.839	0.011
<i>Age</i>	2.193	1.552–3.099	< 0.0001	1.852	1.260–2.724	0.002
<i>Preoperative KPS score</i>	0.958	0.947–0.969	< 0.0001	0.957	0.945–0.969	< 0.0001
<i>Resection</i>	1.381	1.014–1.881	0.041	1.423	1.000–2.027	0.05
<i>Radiotherapy</i>	1.691	1.116–2.561	0.013	3.158	1.999–4.990	< 0.0001
<i>Chemotherapy</i>	0.854	0.602–1.213	0.378			
<i>Gender</i>	0.871	0.613–1.238	0.442			

Abbreviations: KPS, Karnofsky performance status; OS, overall survival.