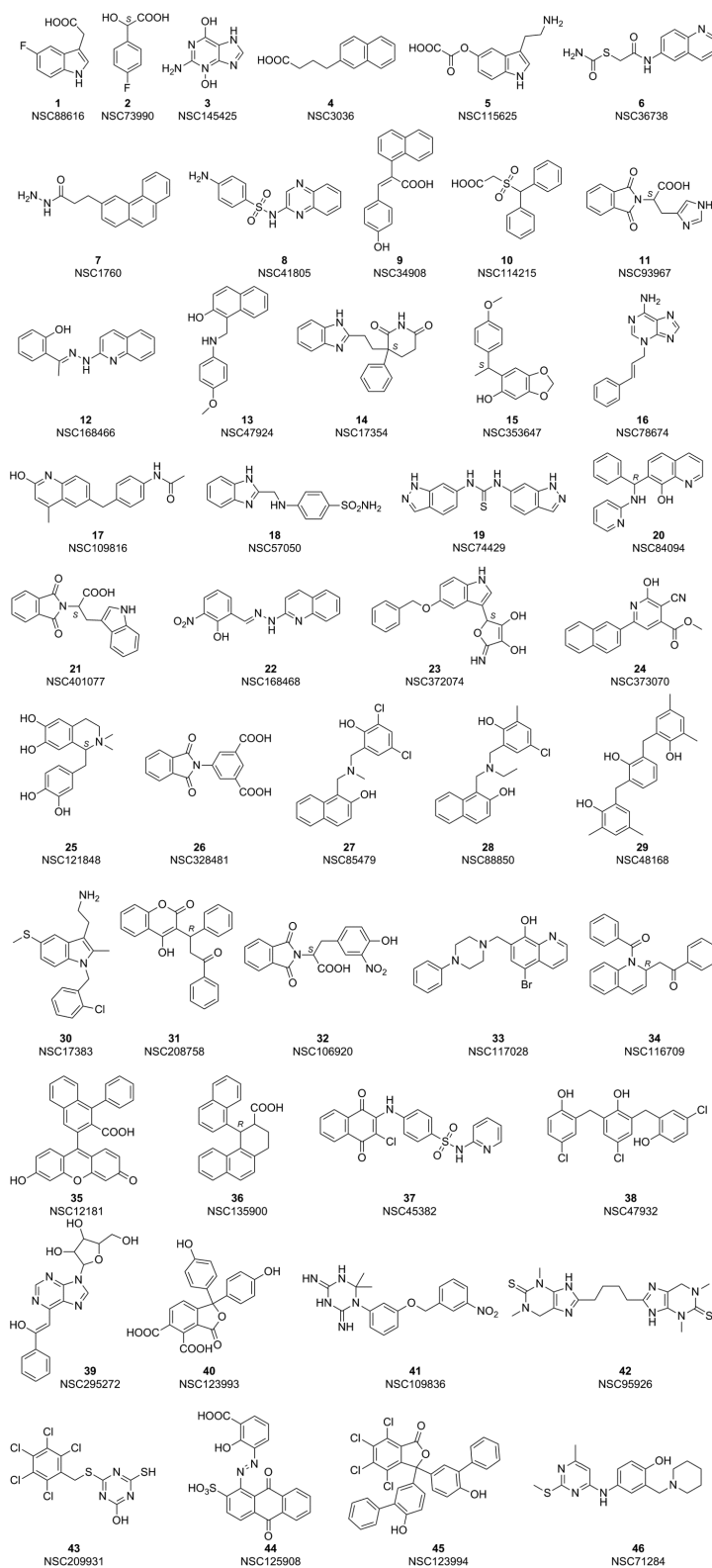
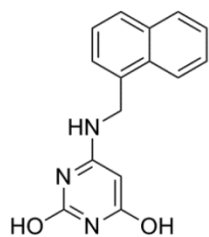


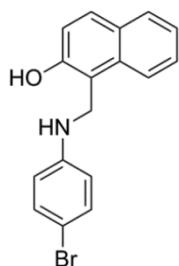
SUPPLEMENTARY CHARTS



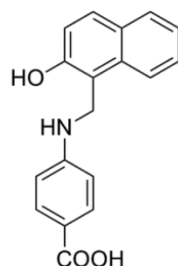
Supplementary Chart 1: SB-VS selected small molecules directed to the peptide G cavity of 67LR.



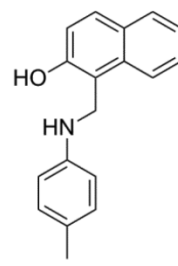
47
NSC210423



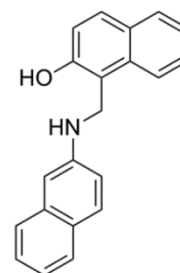
48
NSC47912



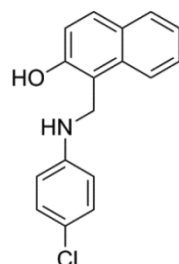
49
NSC47922



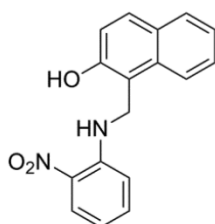
50
NSC47923



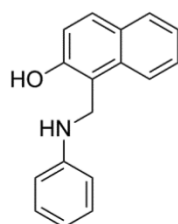
51
NSC47936



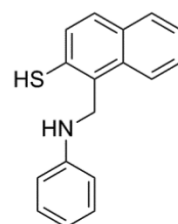
52
NSC48478



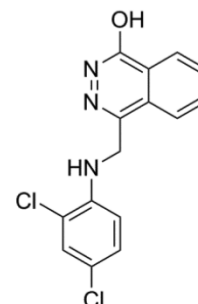
53
NSC48480



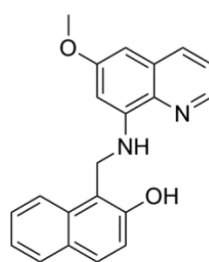
54
NSC48481



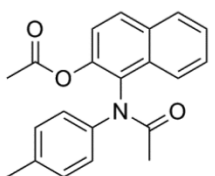
55
NSC89505



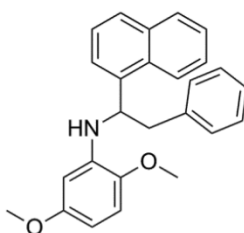
56
NSC646680



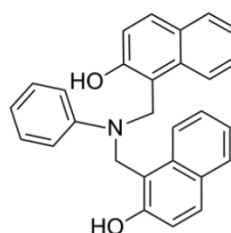
57
NSC130802



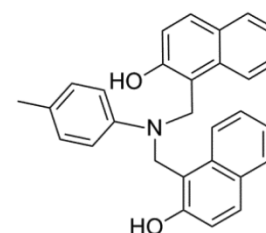
58
NSC47940



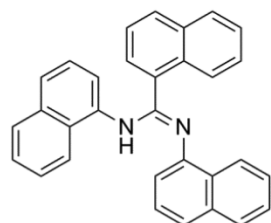
59
NSC403533



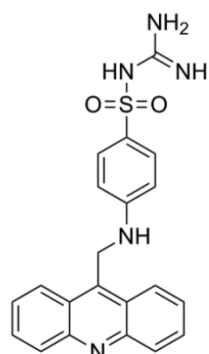
60
NSC48869



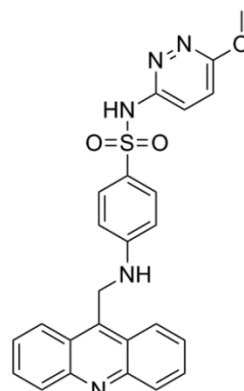
61
NSC48861



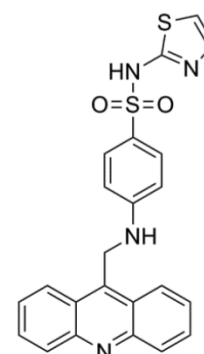
62
NSC44674



63
NSC348894



64
NSC348896



65
NSC353717

Supplementary Chart 2: Refinement of lead 67LR inhibitor NSC47924.