

## **$\beta$ - and $\gamma$ -Actin in the Nucleus of Human Melanoma A375 Cells**

Histochemistry and Cell Biology,

Marta Migocka-Patrzalek<sup>1,2,3\*</sup>, Aleksandra Makowiecka<sup>2</sup>, Dorota Nowak<sup>2</sup>, Antonina J. Mazur<sup>2</sup>, Wilma A. Hofmann<sup>3</sup>, Maria Malicka-Błaszkiwicz<sup>2</sup>

\*Corresponding author:

**Marta Migocka-Patrzalek**

Department of Animal Developmental Biology,

Institute of Experimental Biology,

Faculty of Biological Sciences,

University of Wrocław,

Sienkiewicza 21,

50-335 Wrocław, Poland

Tel: 0048 71 375 40 23

Fax: 0048 71 375 28 95

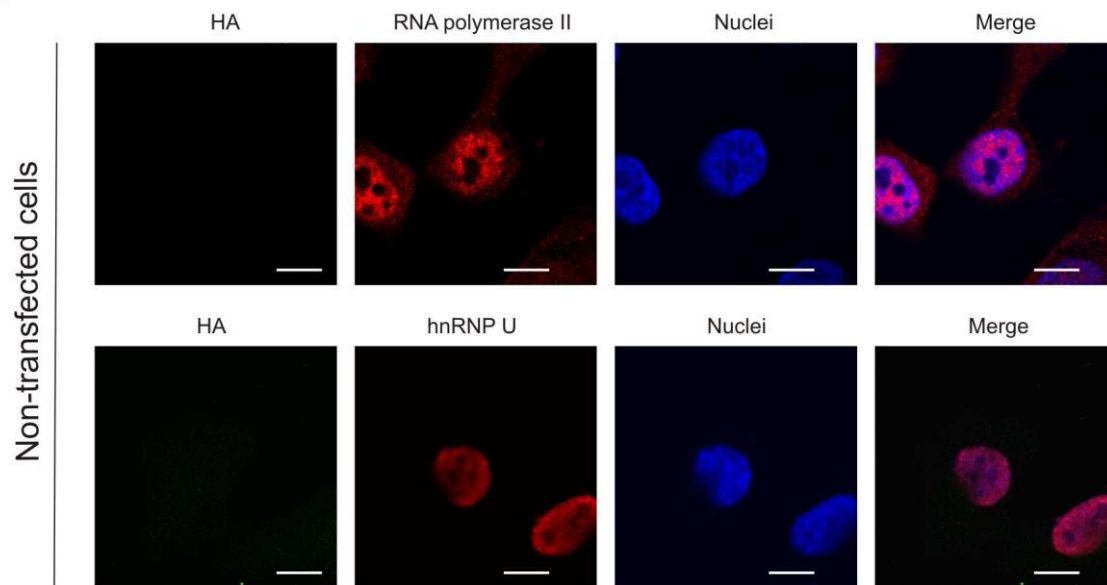
e-mail: [marta.migocka-patrzalek@uni.wroc.pl](mailto:marta.migocka-patrzalek@uni.wroc.pl)

### **ESM.1** Transfection control

**a** Confocal microscopy images of non-transfected A375 cells. Cells were fixed and immunostained with antibodies against hemagglutinin (HA), RNA polymerase II and hnRNP U.

**b** Confocal microscopy images of A375 cells transfected with construct containing only HA. Cells were fixed and immunostained with antibodies against HA, RNA polymerase II and hnRNP U. DAPI was used to mark the nucleus. Scale bar 150  $\mu$ m.

a



b

