

## **$\beta$ - and $\gamma$ -Actin in the Nucleus of Human Melanoma A375 Cells**

Histochemistry and Cell Biology,

Marta Migocka-Patrzałek<sup>1,2,3\*</sup>, Aleksandra Makowiecka<sup>2</sup>, Dorota Nowak<sup>2</sup>, Antonina J. Mazur<sup>2</sup>, Wilma A. Hofmann<sup>3</sup>, Maria Malicka-Błaszkiwicz<sup>2</sup>

\*Corresponding author:

**Marta Migocka-Patrzałek**

Department of Animal Developmental Biology,

Institute of Experimental Biology,

Faculty of Biological Sciences,

University of Wrocław,

Sienkiewicza 21,

50-335 Wrocław, Poland

Tel: 0048 71 375 40 23

Fax: 0048 71 375 28 95

e-mail: marta.migocka-patrzalek@uni.wroc.pl

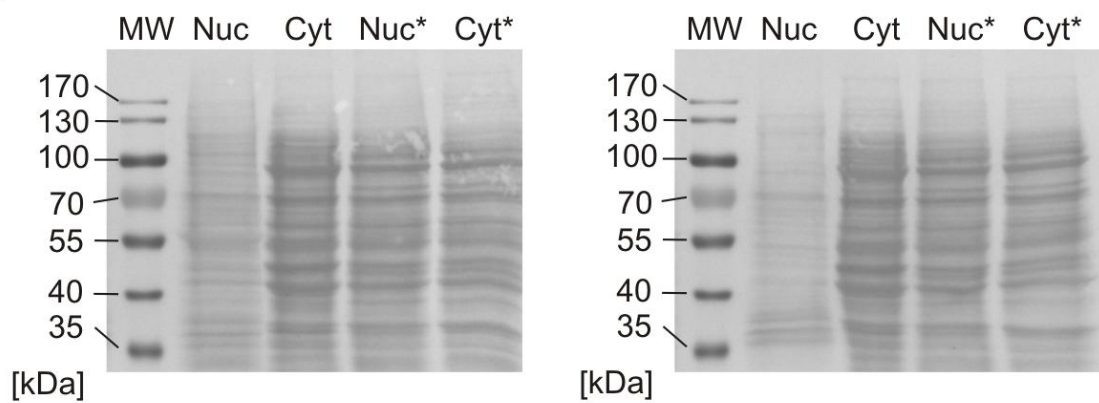
### **ESM.2** Total protein analysis

Equal amounts (50  $\mu$ g) of fractions were separated in SDS electrophoresis, transferred to membranes and stained using Ponceau S solution.

**a** Total protein staining for immunoblot analysis of nucleoplasm (Nuc) and cytosol (Cyt) purity, compared with nucleoplasm (Nuc\*) and cytosol (Cyt\*) obtained using a commercially available kit (showed in Fig. 1b). Left membrane was further probed with antibodies directed against the GAPDH, right against lamin A.

**b** Total protein staining for immunoblot analysis of actin present in nucleoplasm and cytosol (showed in Fig. 2b). Molecular weight (MW) is given in kDa.

**a**



**b**

