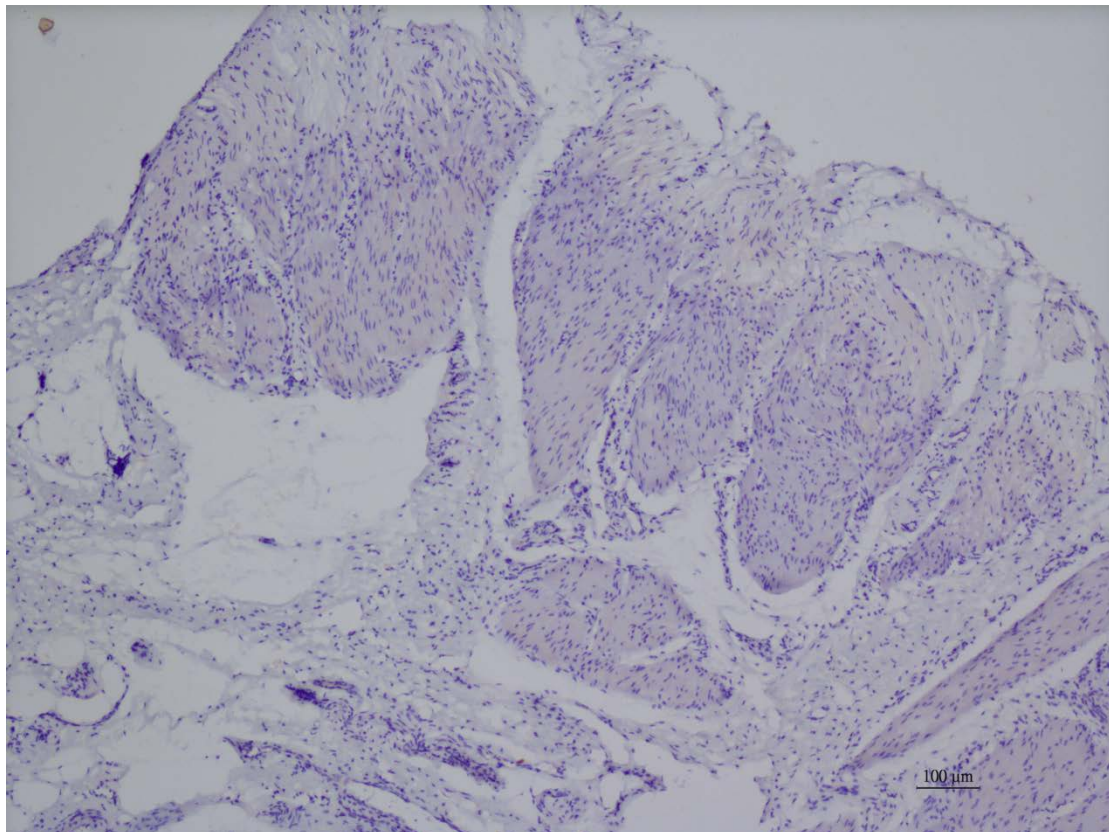


Mechanism of bombesin-induced tonic contraction of the porcine lower esophageal sphincter

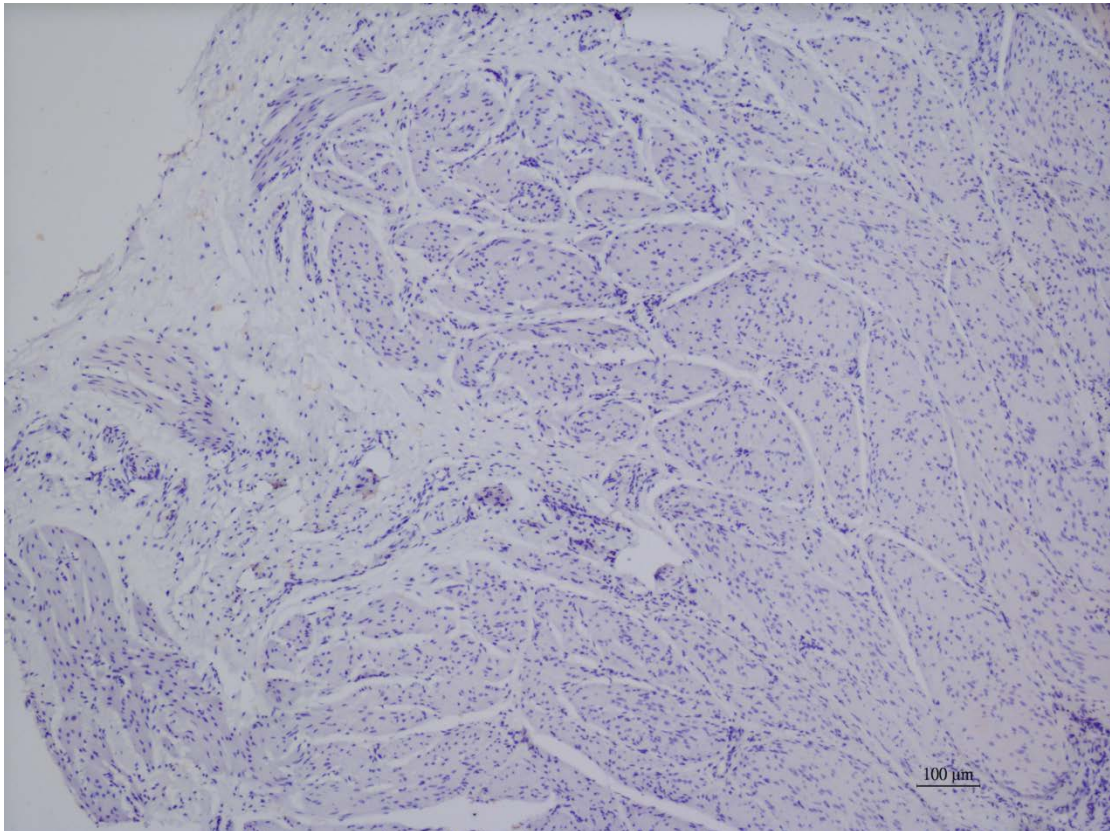
Ching-Chung Tsai , Li-Ching Chang, Kai-Jen Lin, Shu-Leei Tey, Yu-Tsun Su,

Ching-Wen Liu, Tong-Rong Tsai, Shih-Che Huang

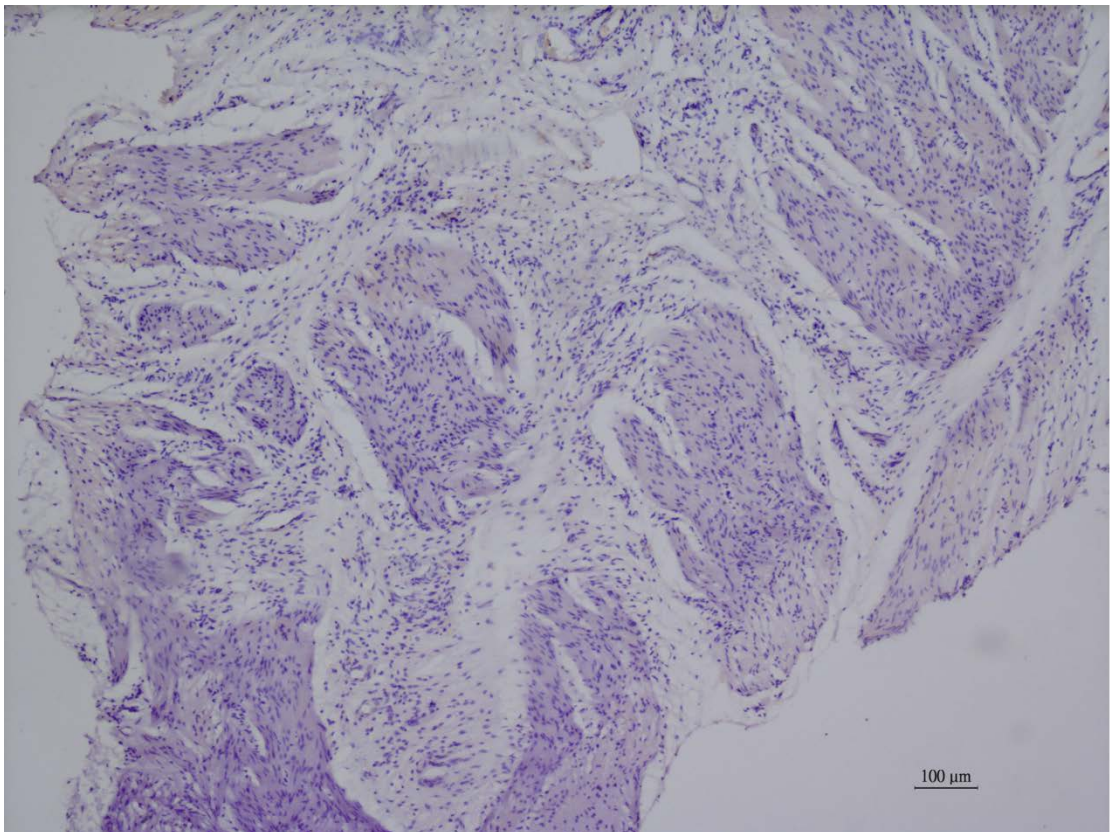
A



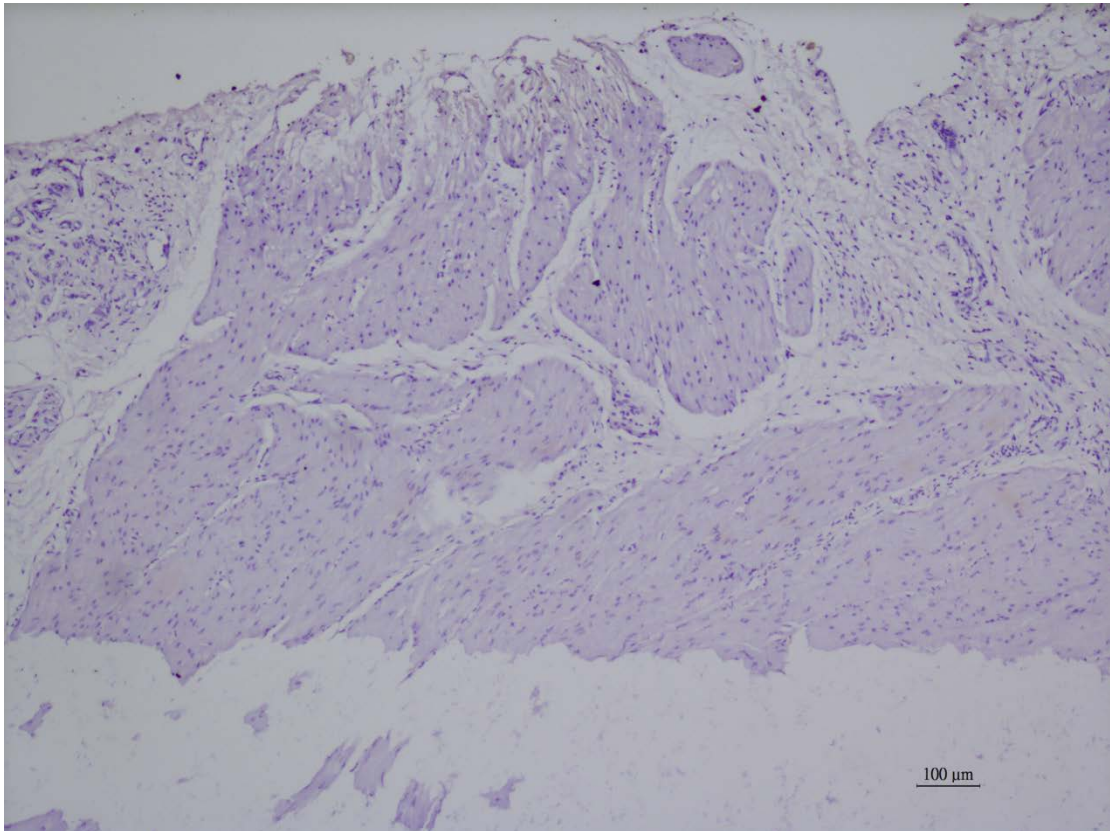
B



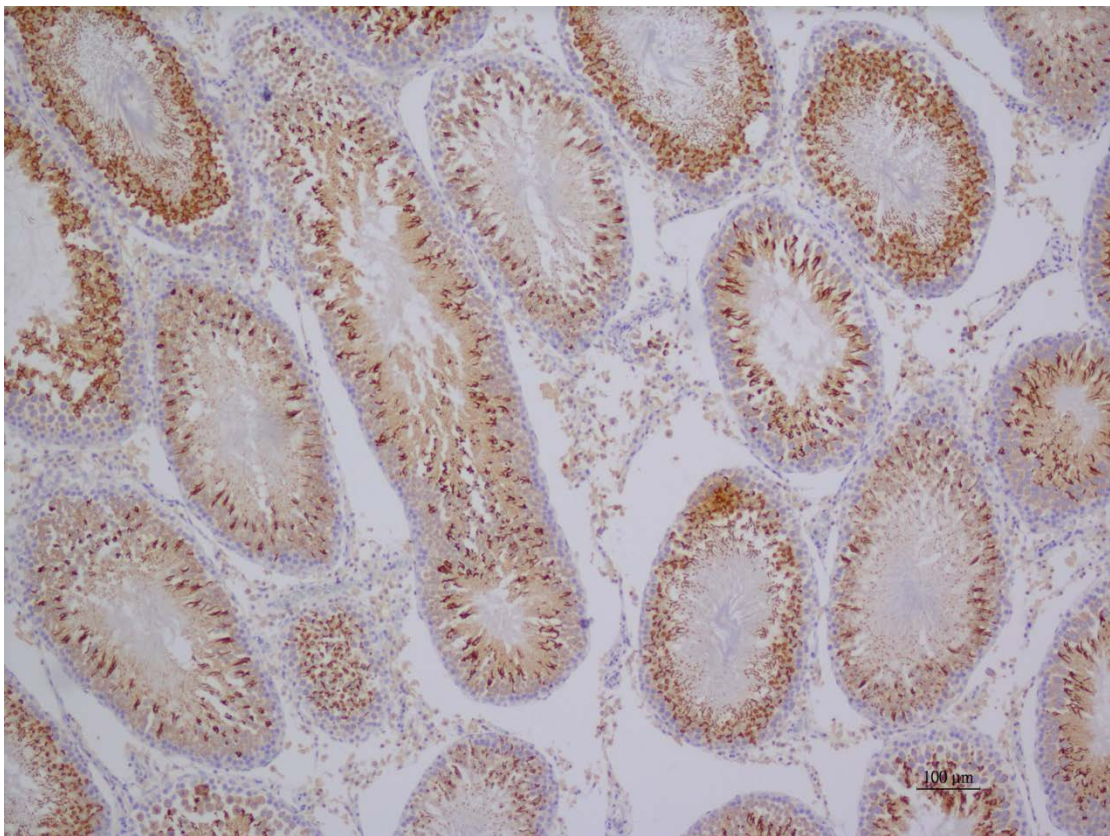
C



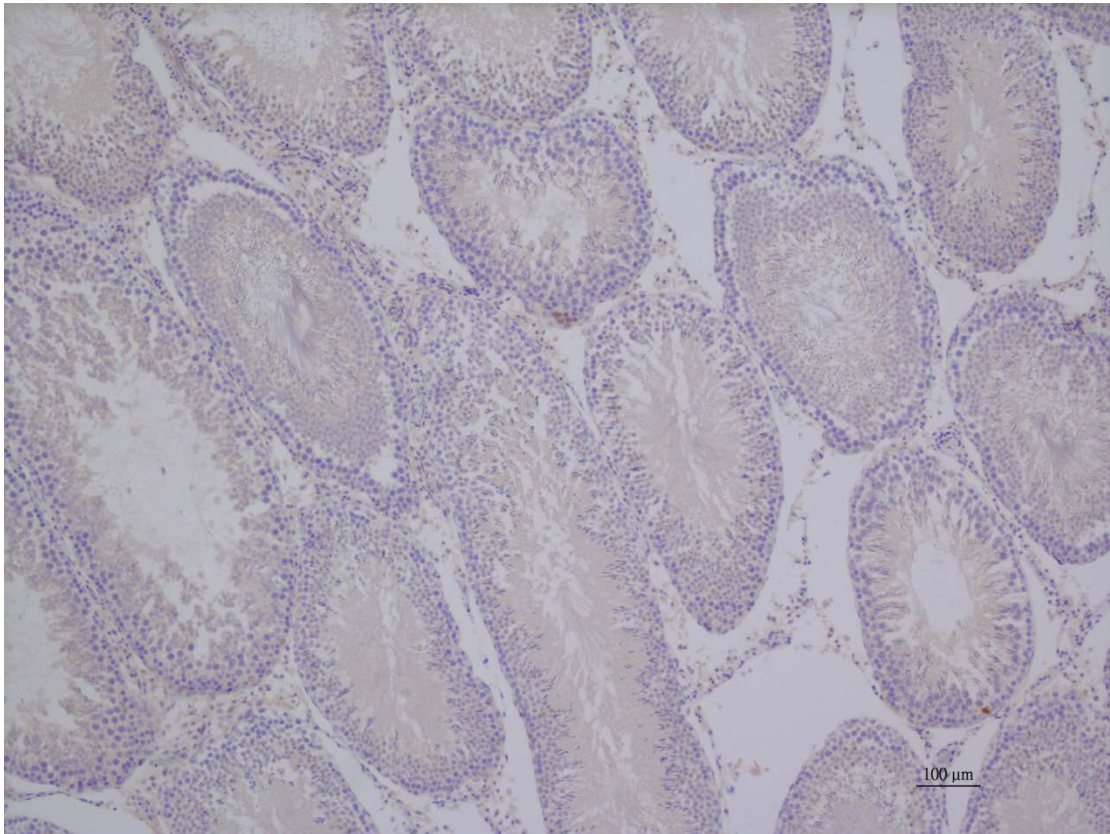
D



E



F



Supplementary Figure S1. Immunohistochemical analysis of the paraffin-embedded sling and clasp muscle fibers stained with a bombesin receptor subtype 1 (BB₁) specific antibody and BB₁ immunostaining was not detected in the LES sling (A) and clasp (B) muscle strips (n = 3, magnification 100×). The tissue sections were stained with equimolar concentrations of normal rabbit IgG, which was used as a negative control for the sling (C) and clasp (D) muscle staining (magnification 100×). BB₁ immunostaining was detected in the rat testes (E) and the sections were stained with equimolar concentrations of normal rabbit IgG, which was used as a negative control for rat testes (F) (magnification 100×).