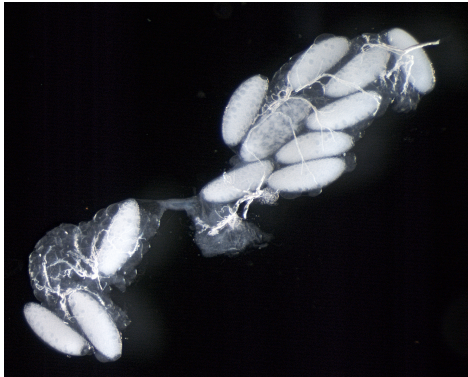


Figure S2. One day old *Aedes aegypti* females (17) were injected with OEH (20 pmol) and five days later, yolk deposition in the oocytes of each ovary was measured. The results for 14 of the females in the sample is presented below. Oocytes per female containing yolk are shown while oocytes with no yolk deposition were not counted. Below the data is shown micrographs of the ovaries for females 3, 4 and 12. Note the large amount of yolk in a few oocytes for females 3 and 12 while other oocytes contain no yolk. In contrast, female 4 contains a larger number of oocytes with yolk but the amount of yolk per oocyte is smaller.

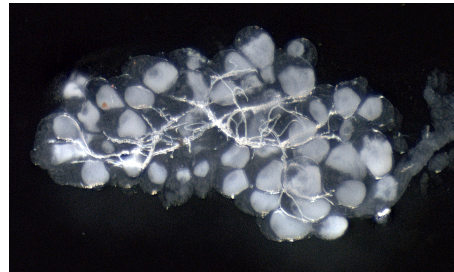
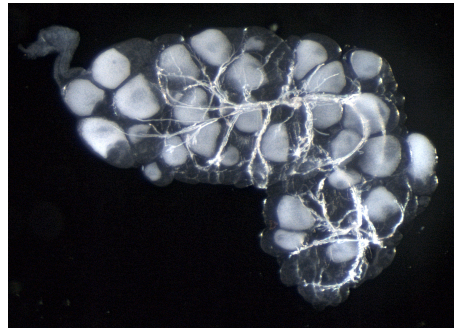
Yolk deposition ( $\mu\text{m}$ ) in each oocyte in the ovaries of OEH injected female

Oocyte #	Female 1		Female 2		Female 3		Female 4		Female 5		Female 6		Female 7		Female 8		Female 9		Female 10		Female 11		Female 12		Female 13		Female 14	
	Ovary A	Ovary B	Ovary A	Ovary B	Ovary A	Ovary B	Ovary A	Ovary B	Ovary A	Ovary B	Ovary A	Ovary B	Ovary A	Ovary B	Ovary A	Ovary B	Ovary A	Ovary B	Ovary A	Ovary B	Ovary A	Ovary B	Ovary A	Ovary B	Ovary A	Ovary B	Ovary A	Ovary B
1	400	300	320	340	400	400	100	100	400	400	400	400	320	380	400	400	380	380	380	380	400	400	400	400	400	400	200	300
2	400	300	320	140	400	400	100	100	400	400	400	400	400	320	380	400	400	380	380	380	400	400	400	400	400	400	200	200
3	400	400	80		400	400	100	100	400	400	400	400	400	380	400	400	380	380	380	160	400	400	400	400	400	100	200	
4	400	400			400	400	100	100	400	400	400	400	400		400	400	380				400	400				50	100	
5		400			400	400	100	100	400	400	400	400	400		180	400	400				400	400				50	50	
6		400			400	400	100	100	400	400	400	400	120			400	400					400				50	50	
7					400	400	100	100	400	400	400	400	400			400	400					400				50	50	
8					400	400	100	100	400	400	400	400	400			400	400					400				50	50	
9					400	400	100	100	400	400	400	400	400			400	400					400				50	50	
10							100	100	400	400	400	400	400			400	400					400				50	50	
11							100	100	400	400	400	400	400			200	200					400				50	50	
12							100	100	400	400	400	400	400			200	200					400				50	50	
13							100	100	400	400	400	400	400			200	200					400				50	50	
14							100	100	400	400	400	400	400			200	200					400				50	50	
15							100	100	400	400	400	400	400			200	200					400				50	50	
16							100	100	400	400	400	400	400			200	200					400				50	50	
17							100	80	400	400	400	400	400			200	200					400				50	50	
18							100	80	400	400	400	400	400			200	200					400				50	50	
19							100	80	400	400	400	400	400			200	200					400				50	50	
20							100	80	400	400	400	400	400			200	200					400				50	50	
22							80	80	400	400	400	400	400			200	200					400				50	50	
23							80	80	400	400	400	400	400			200	200					400				50	50	
24							80	80	400	400	400	400	400			200	200					400				50	50	
25							80	80	400	400	400	400	400			200	200					400				50	50	
26							80	80	400	400	400	400	400			200	200					400				50	50	

Female 3 ovaries



Female 4 ovaries



Female 12 ovaries

