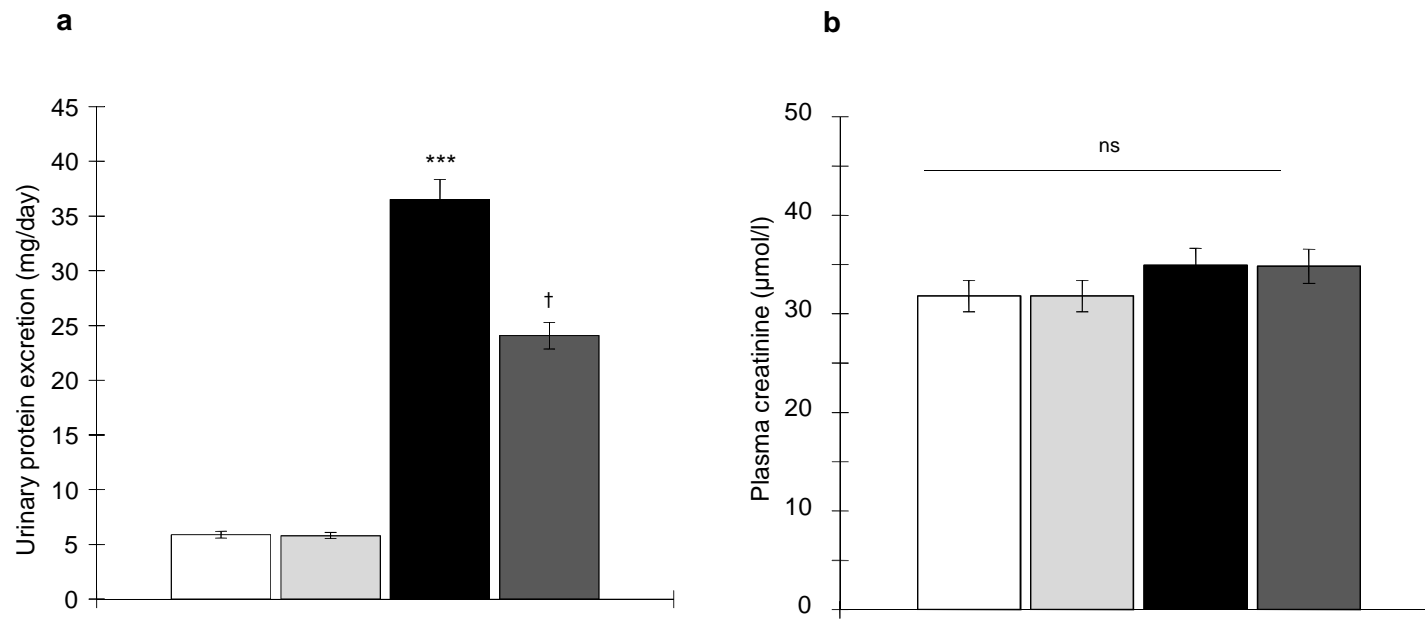
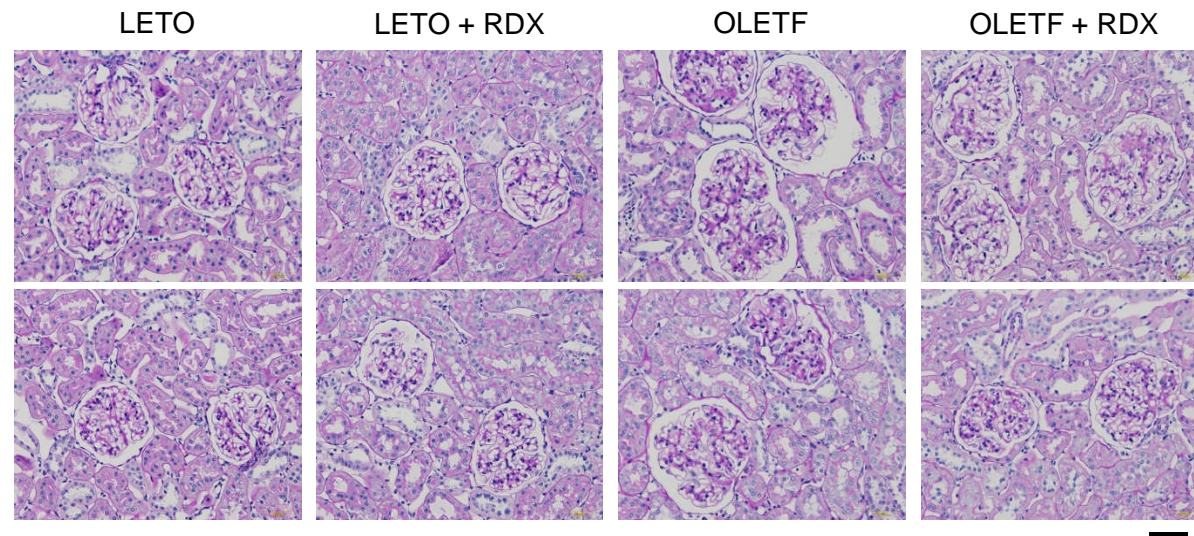


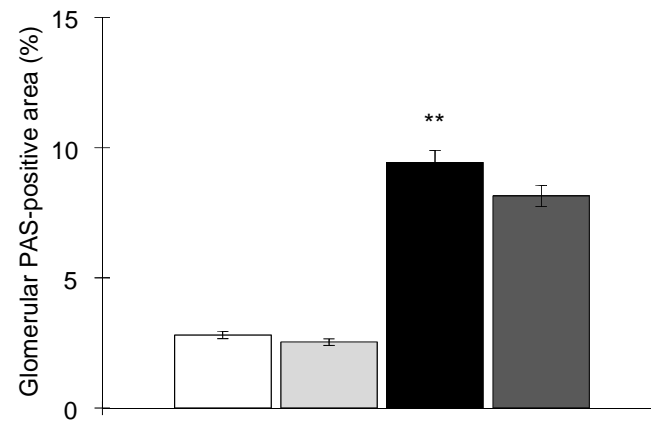
ESM Fig. 5.



c



d



ESM Fig. 5. Proteinuria and plasma creatinine levels were determined, and renal structural changes evaluated by examining periodic acid-Schiff (PAS) staining. **a**, OLETF rats show increased urine protein excretion compared with LETO rats which is reduced by RDX. However, plasma creatinine concentration was not significantly altered between groups (**b**). **c**, Representative micrographs of PAS-stained renal sections (scale bar shows the values), and the PAS-positive area within the total glomerular area (**d**). OLETF rats show increased PAS-positive area and glomerular hypertrophy compared with LETO rats. RDX does not significantly affect these parameters. ** $p < 0.01$, *** $p < 0.005$ LETO vs. OLETF; † $p < 0.05$ OLETF vs. OLETF+RDX. Scale bar represent 50 μm . White bars represent LETO group. Black bars represent OLETF group. Light grey bar represent LETO+RDX. Dark grey bar represent OLETF+RDX.