

Supplemental Figure 2: The effect of FAHF-2 on TNF- α secretion and the NF- κ B pathway

from RAW264.7 cells. A. Representative western blot for I κ B, phospho-I κ B, and beta actin. B.

Percent of I κ B protein after LPS stimulation without FAHF-2 treatment (LPS) and with FAHF-2

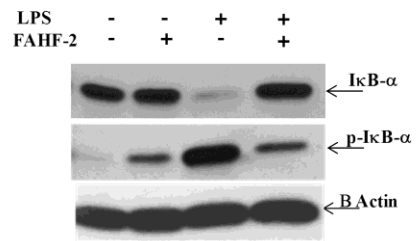
treatment (FAHF-2), as compared with medium alone and FAHF-2 alone. C. The percent of

phosphorylated I κ B after LPS stimulation and with FAHF-2 treatment as compared to LPS

stimulation and medium alone and FAHF-2 alone. All values normalized to beta actin.

***p<0.001

A



B

