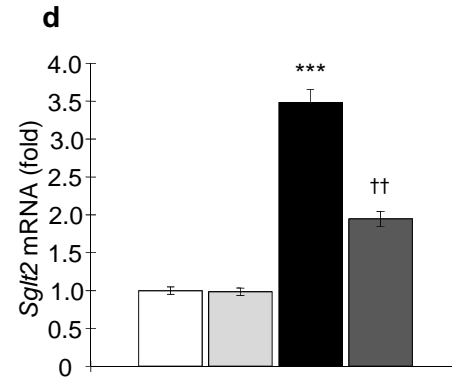
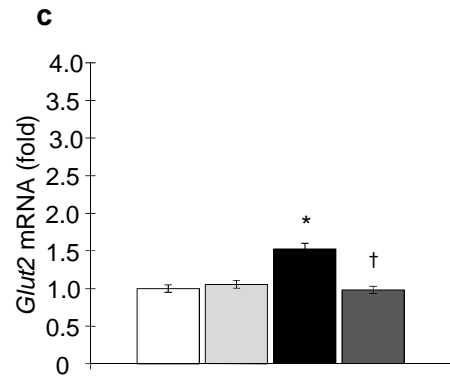
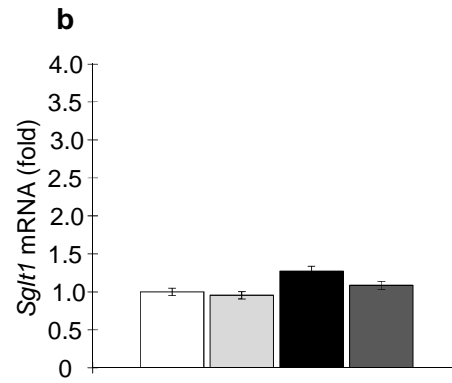
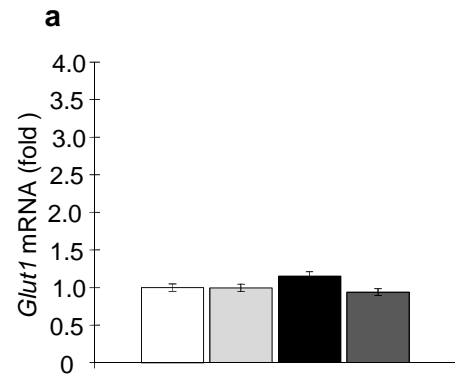
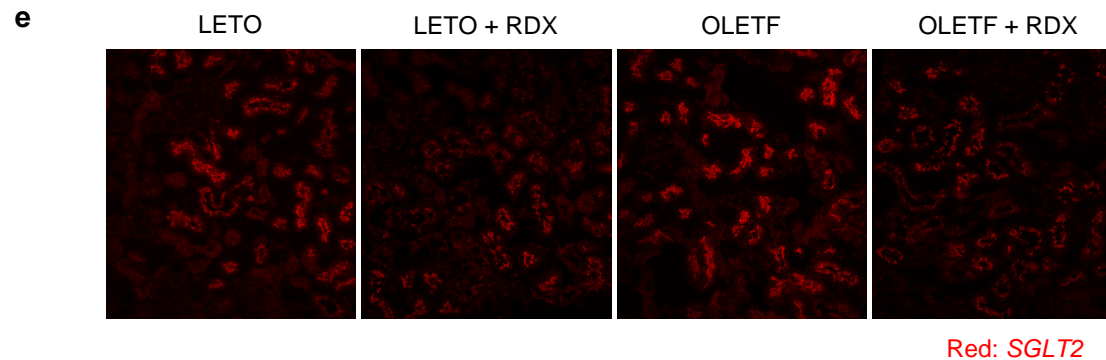


ESM Fig. 4.





ESM Fig. 4. Expression of glucose transporters in the kidney. **a, b**, Renal cortical tissue *Glut1* (**a**) and *Sgl1* (**b**) mRNA levels were similar between treatment groups. However, *Glut2* (**c**) mRNA expression shows significant upregulation in OETF rats compared with LETO rats. Furthermore, *Sgl2* (**d**) mRNA levels were markedly upregulated in renal cortical tissue of OETF rats compared with LETO rats. The mRNA upregulation in OETF rats was suppressed by RDX. Real-time reverse transcription polymerase chain reaction (RT-PCR) data are expressed as fold-changes compared with LETO rats after normalization for the expression of β -actin. **e**, Immunofluorescence micrographs demonstrating staining with an anti-SGLT2 antibody (red fluorescence) (original magnification, $\times 200$). The staining intensity is weaker in OETF+RDX than OETF rats. * $p < 0.05$, *** $p < 0.005$ LETO vs. OETF; † $p < 0.05$, †† $p < 0.01$ OETF vs. OETF+RDX. White bars represent LETO group. Black bars represent OETF group. Light grey bar represent LETO+RDX. Dark grey bar represent OETF+RDX.