

Figure S2

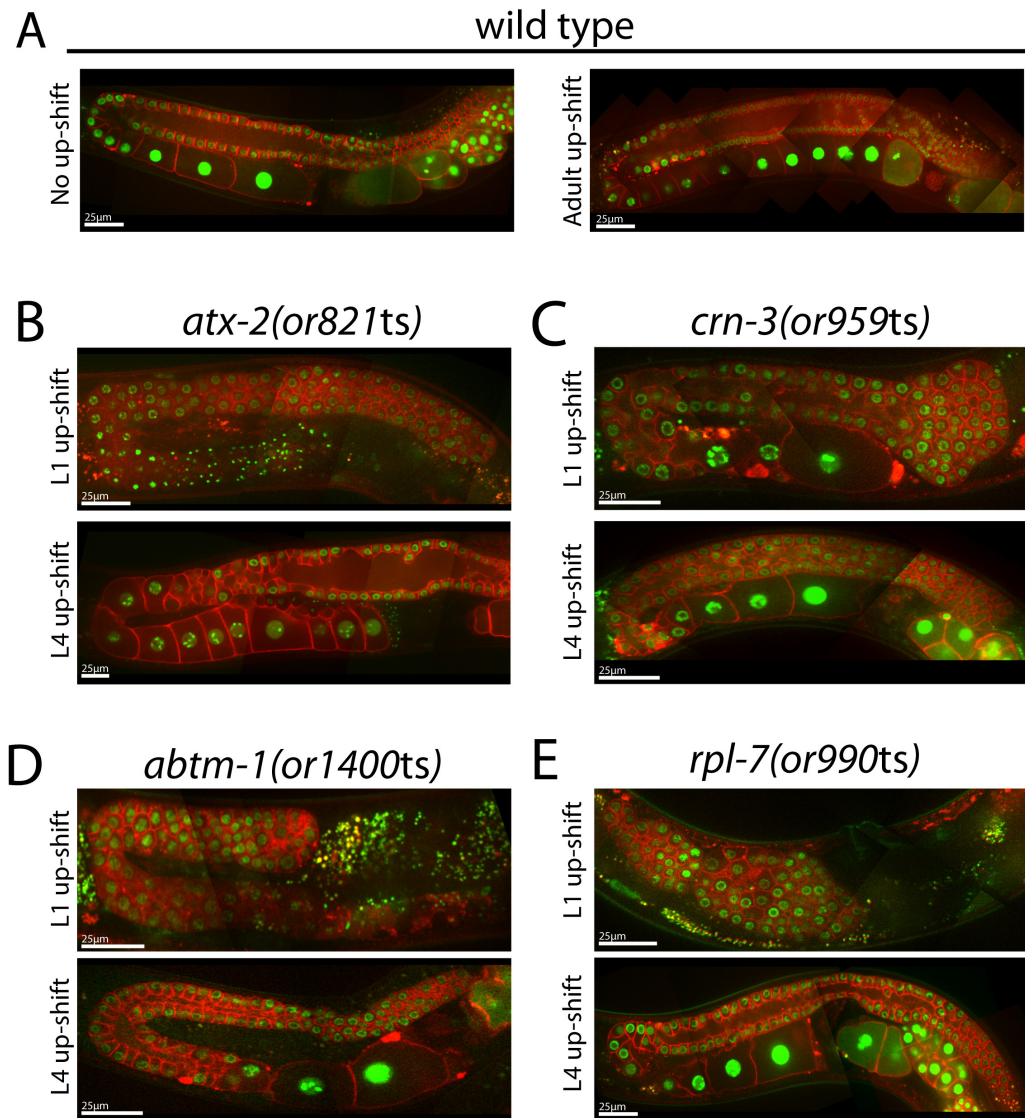


Figure S2 Adult germline defects in wild type and in *atx-2(or821ts)*, *crn-3(or959ts)*, *abtm-1(or1400ts)*, and *rpl-7(or990ts)* mutants following temperature up-shifts to the restrictive temperature (26°C) at the L1 and L4 larval stages. Composite images were prepared as previously described (Figure 3) for the adult hermaphrodite gonad in wild type (A) and mutants (B-E).