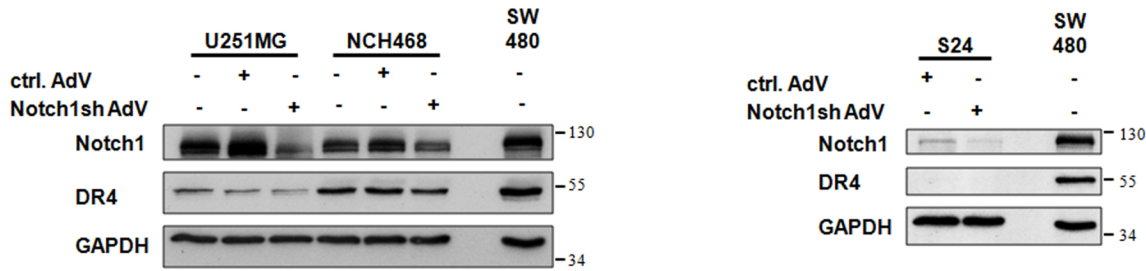
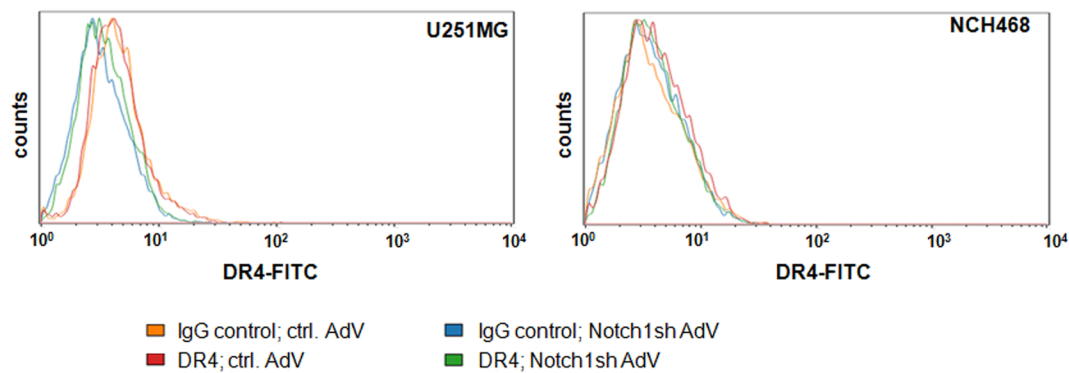


# Fig. S1 - Fassl et al.

## A



## B



**Figure S1: DR4 expression is unchanged following Notch1 inhibition.** **A.** Immunoblot analysis of Notch1 and DR4 in wildtype, control-AdV, and Notch1sh-AdV transduced U251MG and NCH468 cells (left panel) and control-AdV and Notch1sh AdV transduced S24 cells (right panel) 72 h post transduction. SW480 cells serve as positive control. **B.** Amount of DR4 located at the membrane was determined by flow cytometry using a FITC-labeled anti-DR4 antibody and a FITC-labeled IgG as a control.