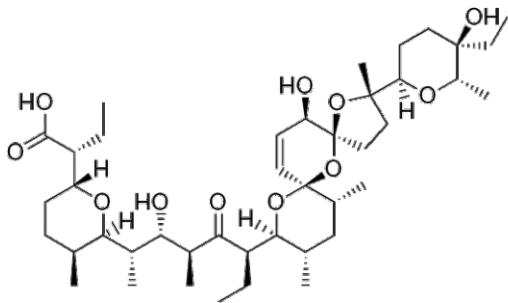
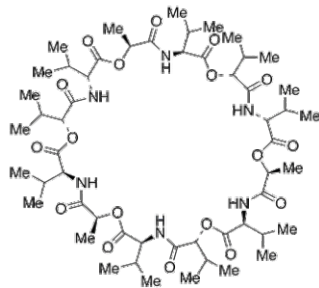


# Figure S1

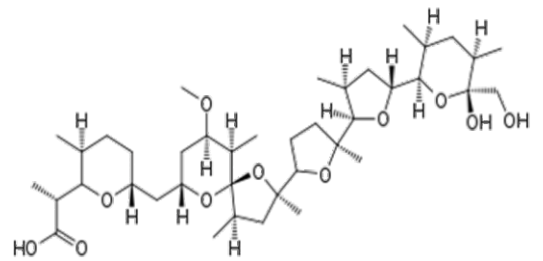
Salinomycin



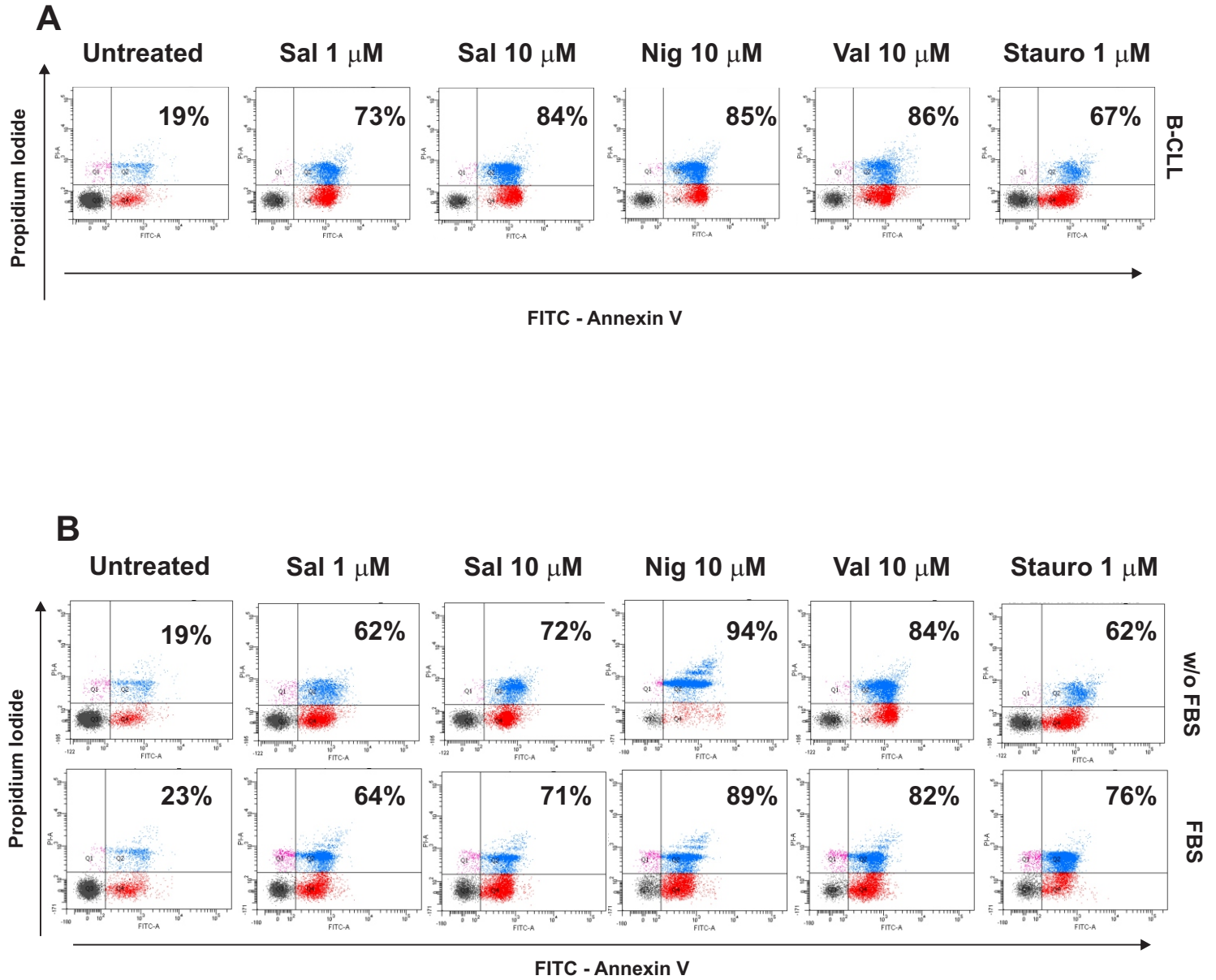
Valinomycin



Nigericin

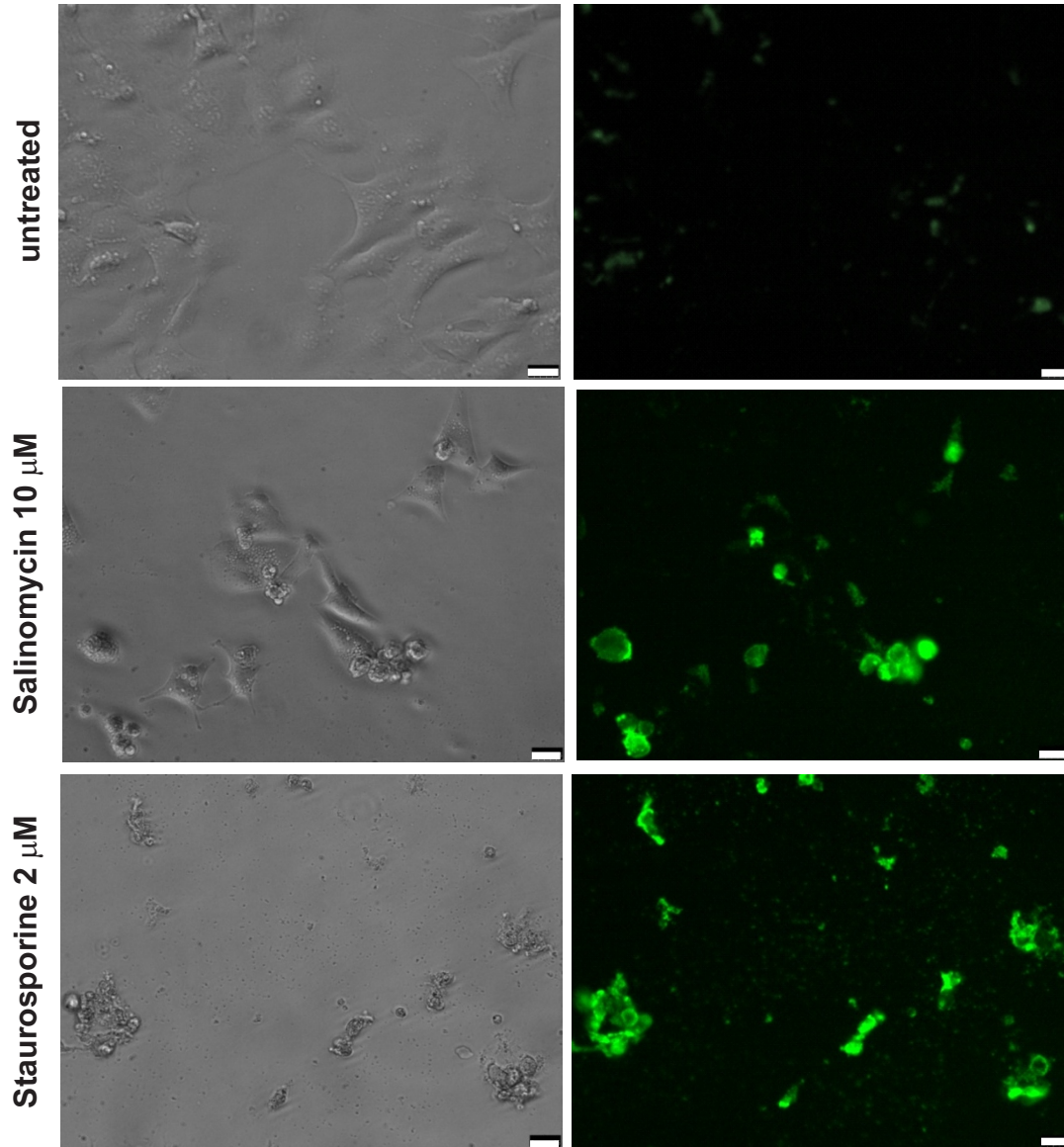


# Figure S2

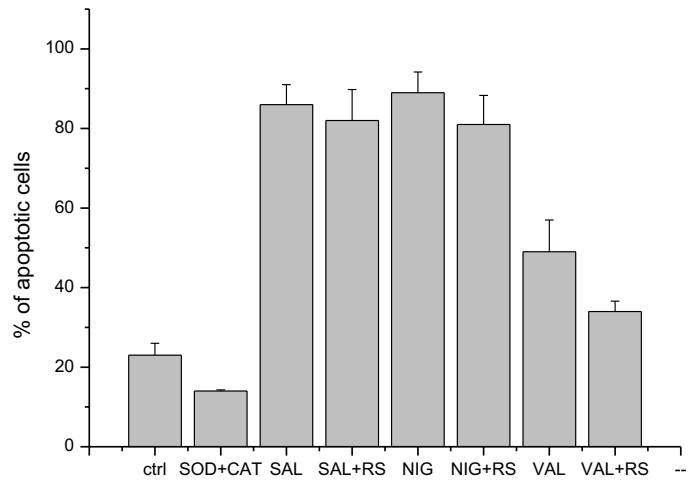


**Figure S3**

**WT MEF cells**



# Figure S4



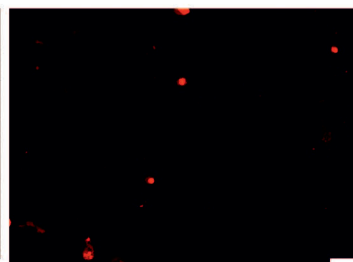
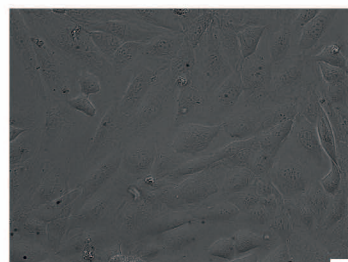
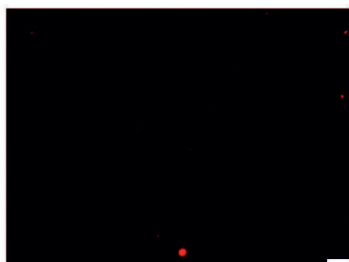
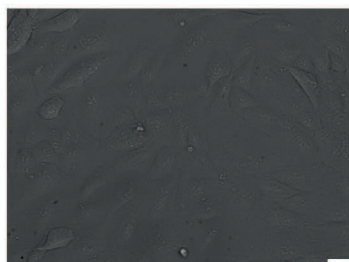
# Figure S5

ROS release

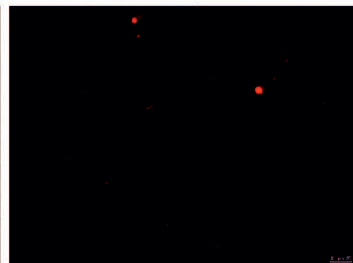
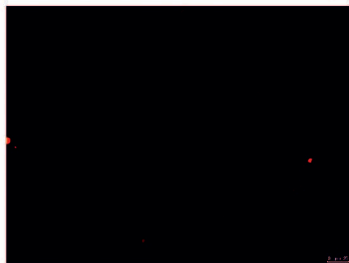
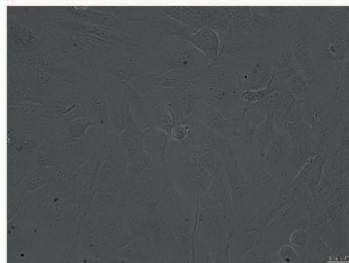
t = 0 min

t = 60 min

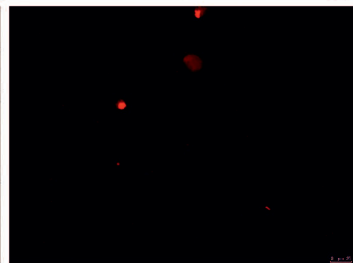
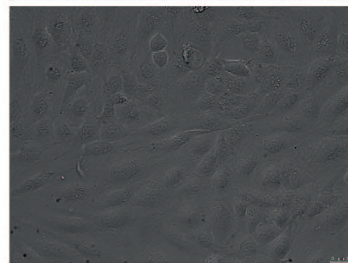
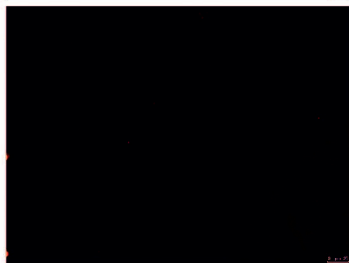
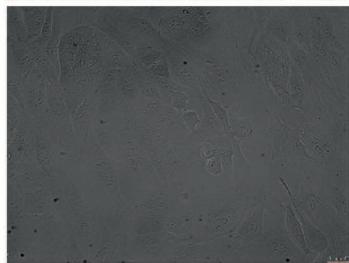
untreated



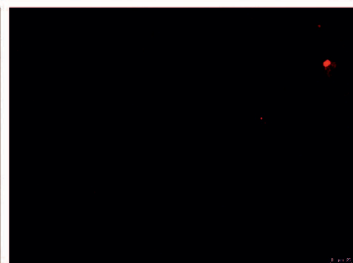
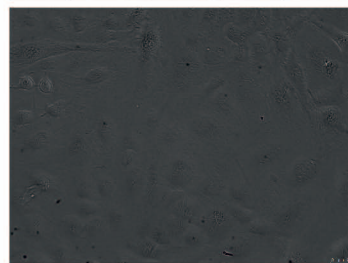
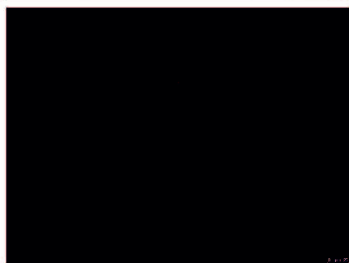
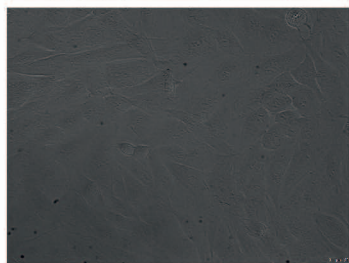
Sal 1  $\mu$ M



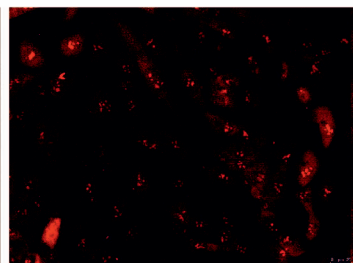
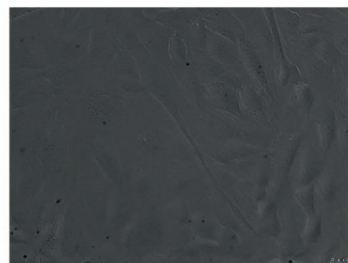
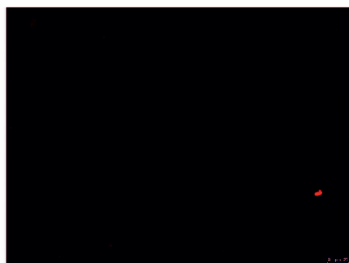
Sal 10  $\mu$ M



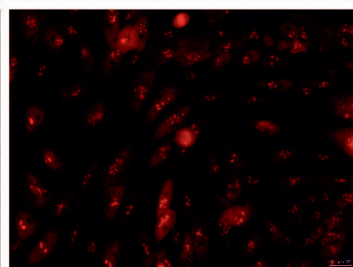
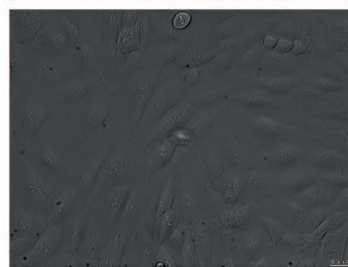
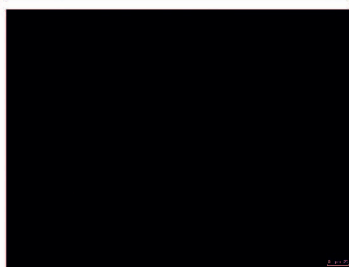
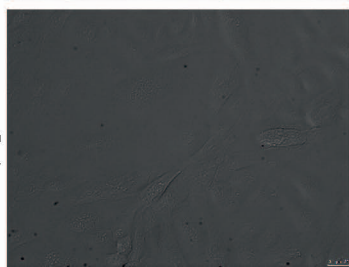
Nig 1  $\mu$ M



Val 10  $\mu$ M



Antimycin  
2  $\mu$ g/mL

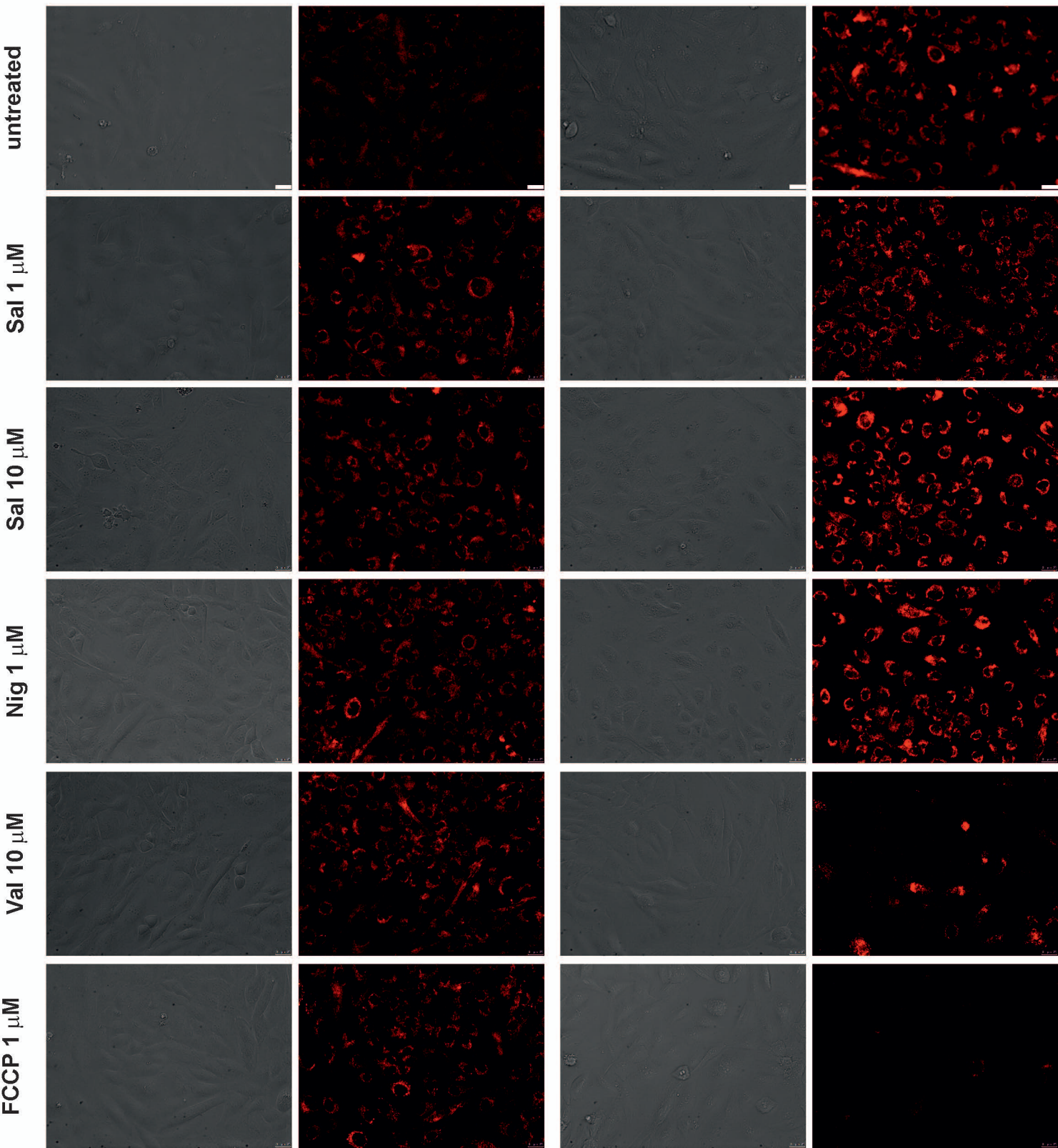


# Figure S6

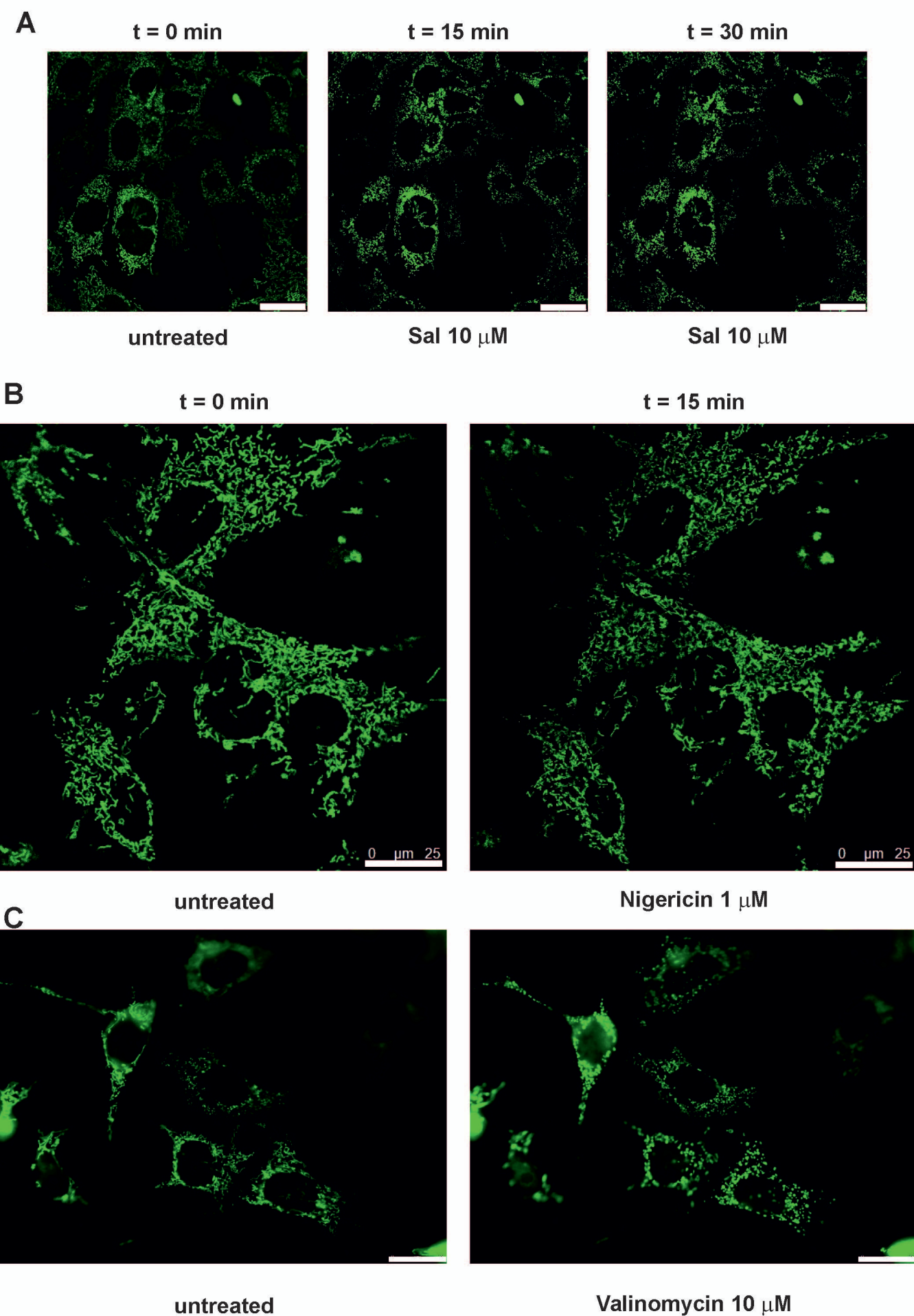
## Mitochondrial depolarization

t = 0 min

t = 60 min

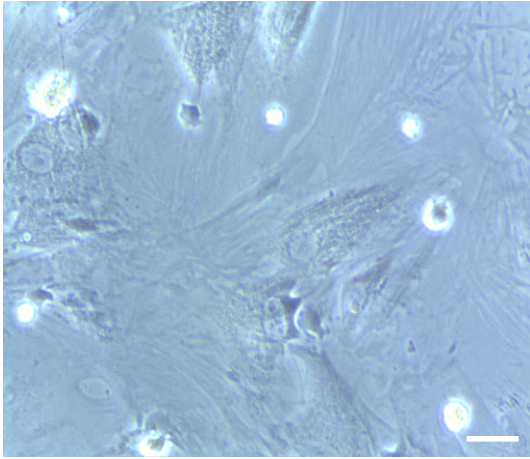


# Figure S7

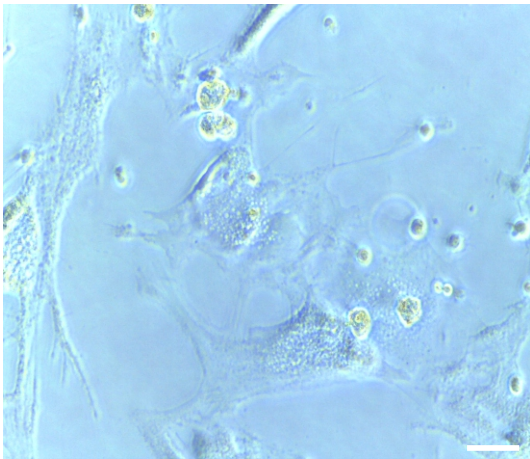
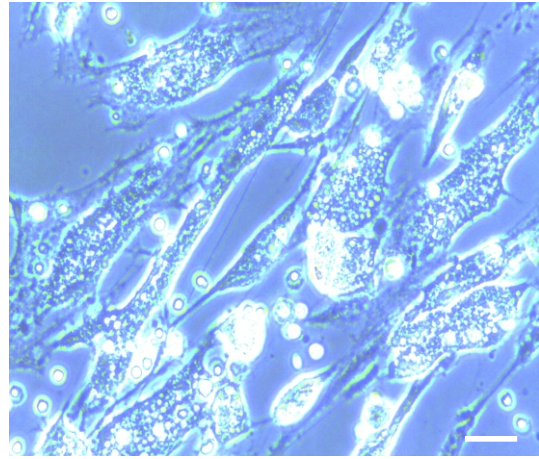


## Figure S8

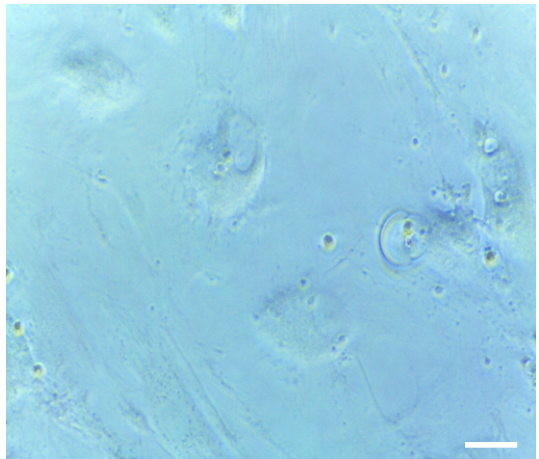
control MSC



Salinomycin 5  $\mu$ M



Salinomycin 10  $\mu$ M



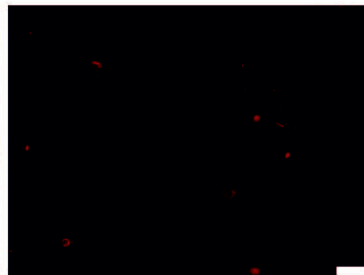
Staurosporine 1  $\mu$ M



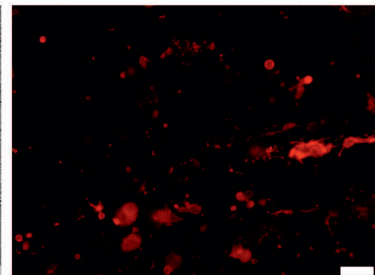
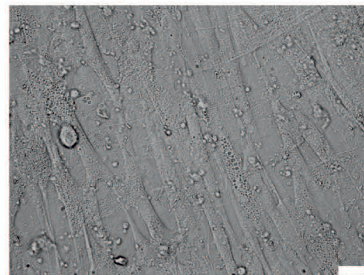
# Figure S9

## Mesenchymal Stromal cells (MSC)

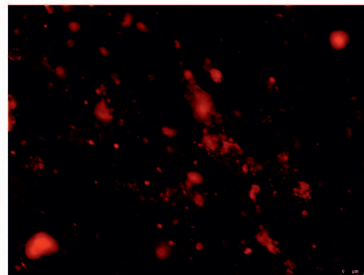
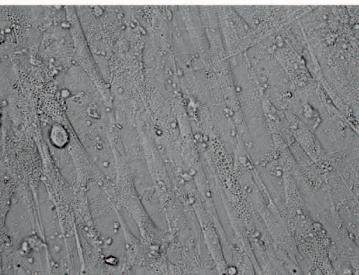
untreated



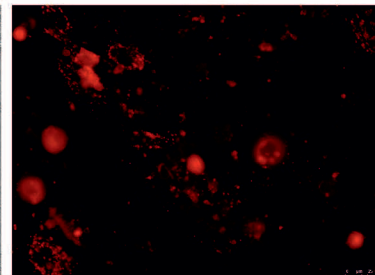
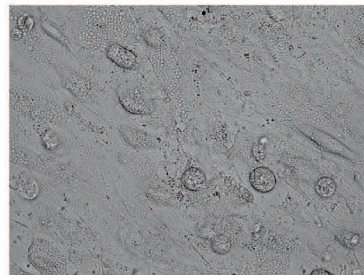
Staurosporine 1  $\mu$ M



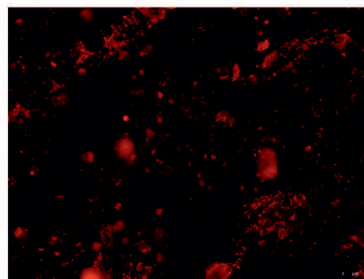
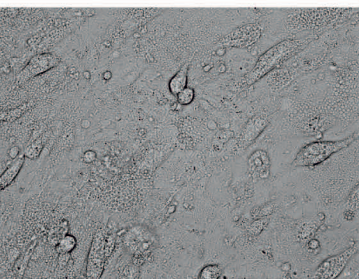
Salinomycin 1  $\mu$ M



Salinomycin 10  $\mu$ M



Nigericin 1  $\mu$ M



Valinomycin 10  $\mu$ M

